



The Rural City of  
MURRAY  
BRIDGE

Bridge to Opportunity



# FERRIES MCDONALD ROAD REDEVELOPMENT PROJECT

## Update Number 35

28<sup>th</sup> June 2013



Ferries McDonald Road provides a strategic link for freight from Langhorne Creek to the Barossa Valley. As part of the design from Garwood Road intersection through to the Freeway (approximately 9.5 km) the road travels through property adjacent to Monarto Conservation Park (please see overleaf a plan identifying the realignment of this section of road).



With changes to the original project schedule, major earthworks have progressed into this area and are continuing. Construction of new road base has commenced.



As previously reported, to enable construction of the road a number of Federal and State Government approvals were required. These "Approvals" prescribe strict "Conditions" for Native Vegetation and protection of Malleefowl. Compliance with the Federal and State Government "Conditions" is being adhered to by the Council.

Road users are reminded to continue to be vigilant within the construction zone and adhere to road works speed limits of 25km/h during the day (while works are underway) and 40km/h at all other times.

Further information is available via Council's website at [www.murraybridge.sa.gov.au](http://www.murraybridge.sa.gov.au) or by collecting a Project Fact Sheet from the Local Government Centre at 2 Seventh Street, Murray Bridge.

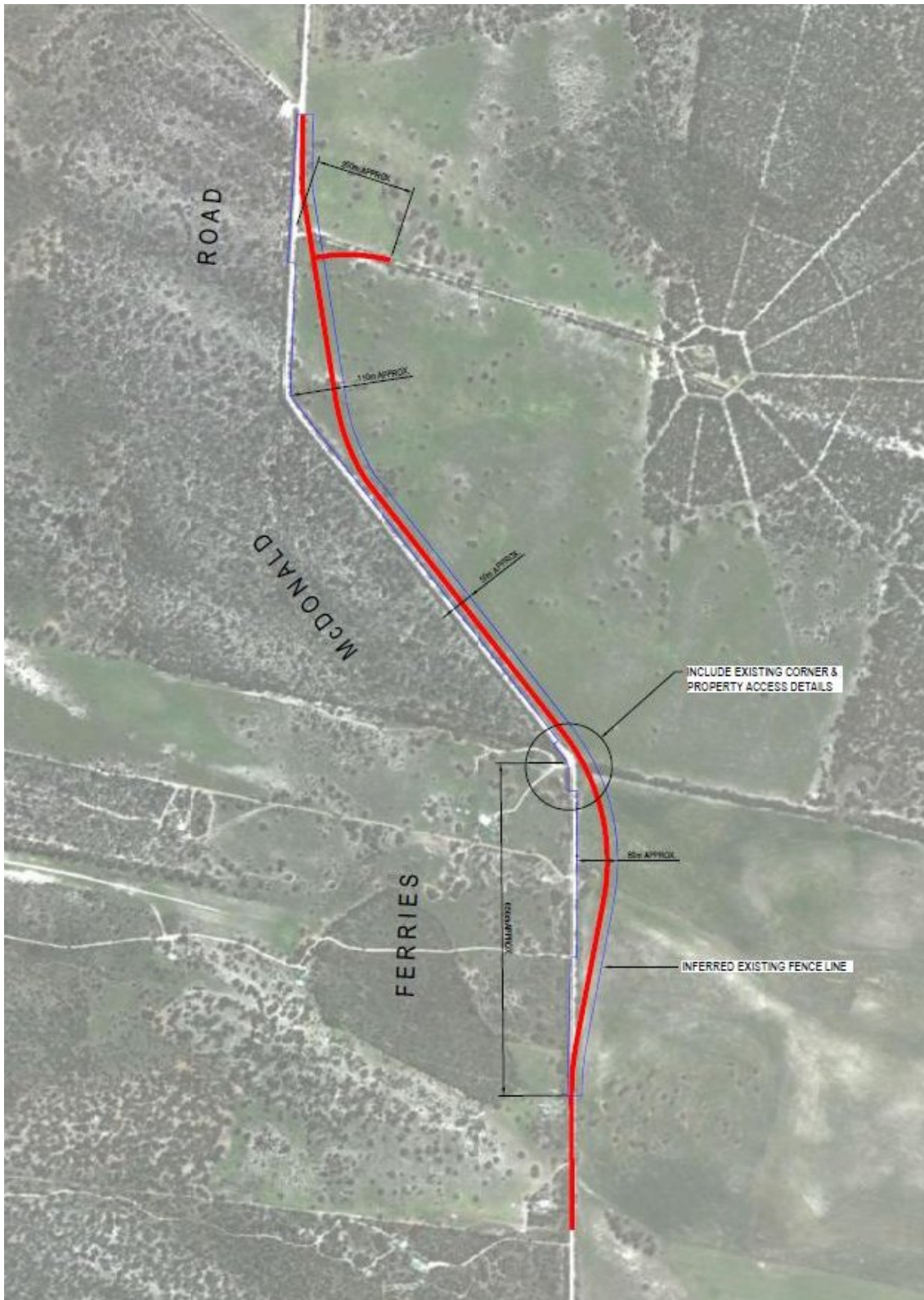
If you have any queries please do not hesitate to contact Council by telephoning 85391160. To report Malleefowl sightings or incidents, please contact 1800 913 613.

**Peter Bond, Chief Executive Officer**

P: 8539 1100

W: [www.murraybridge.sa.gov.au](http://www.murraybridge.sa.gov.au)

Page 1



Realignment of Ferries McDonald Road, adjacent to Monarto Conservation Park