



The Rural City of
MURRAY
BRIDGE

COMMUNITY EMERGENCY MANAGEMENT PLAN

December 2021



Scope and exclusions

The Rural City of Murray Bridge Emergency Management Plan is limited to community emergency risks that are within Council's sphere of influence and responsibility. The plan does not address the management of internal emergency risk to Council operations or services as these are addressed in the Rural City of Murray Bridge Continuity Plan and other internal procedures.

Acknowledgements

This document has been prepared by the Rural City of Murray Bridge with support of the LGA Emergency Management Support Unit Council Ready Program received funding support under the Natural Disaster Resilience Program by the South Australian State Government and the Commonwealth Department of Home Affairs, and from the LGA Mutual Liability Scheme.


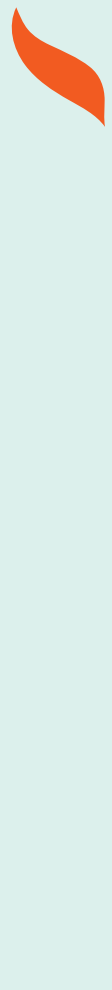
The Rural City of Murray Bridge also acknowledges input from Emergency Services.

Further consultation with local stakeholders will occur to inform future versions.

Disclaimer

The information contained in this report is provided by the Rural City of Murray Bridge. This report has been prepared in good faith and is derived from sources believed to be reliable and accurate at the time of publication. Nevertheless, the reliability and accuracy of the information cannot be guaranteed and the Rural City of Murray Bridge expressly disclaims liability for any act or omission done or not done in reliance on the information and for any consequences, whether direct or indirect, arising from such act or omission. Information in this report is intended to be a guide only and readers should obtain their own independent advice and make their own necessary inquiries.

Views and findings associated with this initiative are expressed independently and do not necessarily represent the views of the funding bodies and/or stakeholders identified.



CONTENTS



1	Executive summary	4
2	Introduction	5
3	State context	7
4	Regional context	11
5	Council context	13
5.1	Our community profile	14
5.2	Our planning and preparation	23
5.3	Our response approach	28
5.4	Our recovery approach	32
6	Risk assessments	34
7	Priority actions	40
7.1.1	Planning and preparation	40
7.1.2	Incident operations to assist in our response	42
7.1.3	Recovery	43
8	Consult and engage	44
9	Implementation	45
10	Appendix 1 Stakeholders	46
11	Appendix 2 Useful Information in an emergency	50



1 EXECUTIVE SUMMARY

THE RURAL CITY OF MURRAY BRIDGE HAS ADOPTED THE APPROACH OF ENSURING STRONG COLLABORATIVE PARTNERSHIPS WITH EMERGENCY SERVICES, GOVERNMENT AND NON-GOVERNMENT ORGANISATIONS ALONG WITH LOCAL COMMUNITY NETWORKS TO MINIMISE THREATS AND CONTRIBUTE TO THE SAFETY AND WELLBEING OF OUR COMMUNITY AND VISITORS.

We accept that Emergencies can occur at any time with little warning, rapidly spread over designated boundaries and cause diverse and widespread impacts across affected communities and will work closely with our neighbouring Councils to ensure we work seamlessly together.

Within our Council area we have experienced fire, extreme weather – storm and/or heat, high river and riverbank collapse emergencies. We anticipate new threats will emerge in response to changing social, environmental and economic conditions of the future. It is anticipated that these may include more frequent and higher intensity bushfires, extreme storms and prolonged heatwaves.

The State Emergency Management Plan (SEMP) articulates the roles and responsibilities that Local Government may play in the local emergency management planning, the Local Government Emergency Management Framework (LGEMF) 2019 provide guidance for councils.

Council has considered these documents in developing the Rural City of Murray Bridge Strategic Plan and supporting documents that articulate our approach to emergency management.

This Plan is a valuable tool in delivering Council's Strategic Management Plan and Emergency Management Framework through identifying actions identified to provide for disaster reduction, inform our incident operations and considerations for Recovery.

Council's Emergency Management Plan addresses:

Planning and Preparation

Goal 1	Increase understanding of Emergency Hazards and Risk to Community and Council.
Goal 2	Ensure disaster risk is integrated into strategic and operational plans and decision making.
Goal 3	Building Community and Council resilience for emergencies through engagement with Community around local risks.
Goal 4	Build collaborative relationships with Emergency Services.

Incident operations to assist our Response

Goal 5	Improve systems, training and processes that enable Council to support the Community and Emergency Services during incidents.
--------	---

Recovery

Goal 6	Develop a shared understanding of Council's role in recovery following a major incident.
--------	--

2 INTRODUCTION

THE PLAN IS INFORMED BY COUNCIL'S STRATEGIC PLAN AND IDENTIFIES RESPONSIBILITIES AND RESOURCES TO ACHIEVE BROAD STRATEGIES AND IS NOT FOR USE IN INCIDENT OPERATIONS.

It is a living document and is based on continuous improvement.

Council will continue to work closely with State Hazard Leaders, Control Agencies and Functional Support agencies to ensure:

- we have a plan in place to mitigate risks
- we are in a position to support their response
- assist in Community Led recovery
- we will continue to work with all agencies in increasing the resilience of our Community.

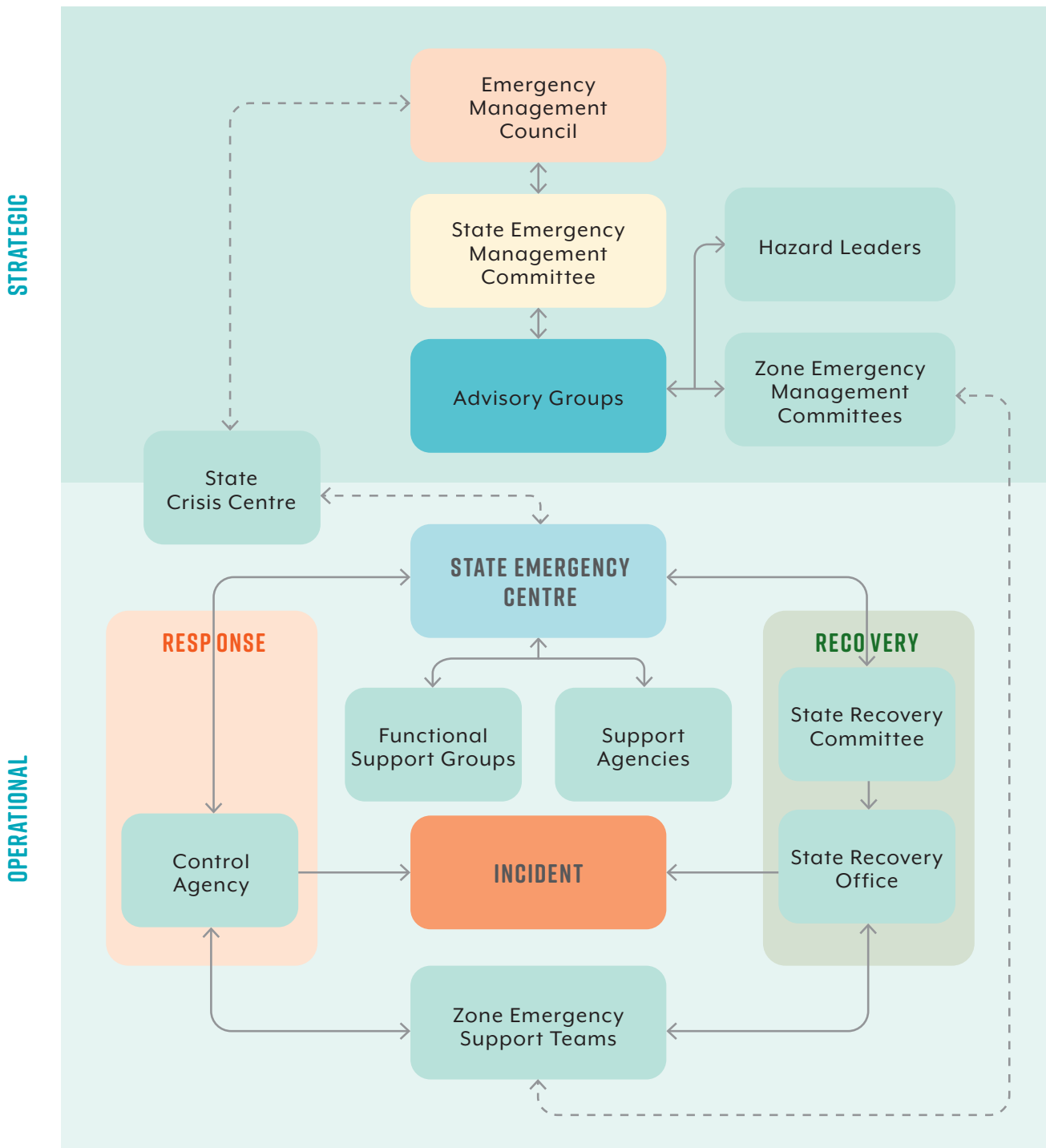
This Plan references context from State and Regional perspectives as this informs our Council (local) approach.





3 STATE CONTEXT

OVERVIEW OF ARRANGEMENTS



Our State's Emergency Management Plan can be viewed by www.dpc.sa.gov.au/responsibilities/security-and-emergency-management/state-emergency-management-plan

Our Council is a member of the Murray Mallee Zone Emergency Management Committee and Zone Emergency Support Team. Local Government is a Functional Support Team led by the Local Government.

The State Emergency Management Committee has identified ten key hazards or potential emergency situations in South Australia and has assigned specific agencies – known as ‘hazard leaders’ – to manage them.

Hazard	Hazard Leader
Animal & Plant Disease	Primary Industries & Region SA
Black System Event	SA Police
Earthquake	Department of Infrastructure & Transport
Extreme Weather	SA Emergency Service
Fire – Rural	SA Country Fire Service
Fire – Urban	SA Metropolitan Fire Service
Flood	Department of Environment and Water
Hazardous Materials	Safe Work SA
Human Disease	SA Health
Terrorism	SA Police

Control agencies are those agencies nominated in advance to take charge at an emergency. The control agencies are:

Type of Emergency Incident	Control Agency
Aircraft Incident	SA Police
Animal, plant & marine disease	Primary Industries & Regions SA
Bomb threat	SA Police
Earthquake	SA Police
Extreme Weather	SA State Emergency Service
Fire – Country	SA Country Fire Service
Fire – Urban	SA Metropolitan Fire Service
Flood	SA State Emergency Service
Food/drinking water contamination	SA Health
Fuel, gas and electricity shortages	Department for Energy & Mining
Hazardous materials emergencies	SA Country Fire Service or SA Metropolitan Fire Service
Human Epidemic	SA Health
Cyber Crisis	Department of Premier and Cabinet
Marine Transport Accidents	SA Police
Marine Pollution	Department of Infrastructure & Transport
Rail accident	SA Police
Riverbank Collapse	SA Police
Search and Rescue – Land & Sea	SA Police
Search & Rescue – structure (USAR)	SA Metropolitan Fire Service, or SA State Emergency Service
Siege/Hostage	SA Police
Terrorist incident	SA Police

Co-ordinating Agency

Coordination is undertaken by SAPOL as the Coordinating Agency irrespective of any declaration that may be made by the State Coordinator or Governor.

Functional Support Groups are comprised of both government and non-government agencies to perform functional roles to support the Control Agency or Support Agencies. They are not Control Agencies or Support Agencies. Functional Support Groups operate within the State Emergency Centre and the State Recovery Committee.

Group	Lead
Ambulance and First Aid	SA Ambulance
Defence	Defence SA
Emergency Relief	Housing SA
Engineering	SA Water
Government and Radio Network	SA Police
Local Government	Local Government Association of South Australia
Logistics	SAFECOM
Mapping	Department for Environment and Water
Public Information	SA Police





4 REGIONAL CONTEXT

THE RURAL CITY OF MURRAY BRIDGE IS LOCATED WITHIN THE MURRAYLANDS AND RIVERLAND ZONE WHICH COMPRISES:

Murraylands Councils

- Coorong District Council
- Mid Murray Council
- District Council of Karoonda East Murray
- Rural City of Murray Bridge
- Southern Mallee District Council.

Riverland Councils

- Berri Barmerra Council
- District Council of Loxton Waikerie
- Renmark Paringa Council.

Council shares boundaries with:

- Adelaide Hills Council
- Alexandrina Council
- Coorong Council
- District Council of Karoonda East Murray
- Mid Murray Council
- Mount Barker District Council.

The Rural City of Murray Bridge is a participating member of the following:

Murray Mallee Zone Emergency Committee

- Murray Mallee Zone Emergency Management Plan
- Murray Mallee Zone Recovery Plan (under development)
- Murray Mallee Hazards & Risk Summary.

Murray Mallee Bushfire Management Committee

- Murray Mallee Bushfire Management Area Plan.

Murraylands and Riverland Local Government Association

- Murray Mallee 2030 Regional Transport Plan
- Murray Mallee Regional Health Plan
- Climate Change Adaptation Program Report – 2012 LGMLS
- Regional Waste Management Strategy.

Local Government Functional Support Group

South Australian Government Regions



- | | | |
|--------------------------------|------------------------------|---------------------|
| Adelaide Hills | Far North | Northern Adelaide |
| Barossa, Light and Lower North | Fleurieu and Kangaroo Island | Southern Adelaide |
| Eastern Adelaide | Limestone Coast | Western Adelaide |
| Eyre and Western | Murray and Mallee | Yorke and Mid North |

5 COUNCIL CONTEXT

THE RURAL CITY OF MURRAY BRIDGE COMMUNITY PLAN HAS INFORMED COUNCIL'S STRATEGIC PLAN AND SUBSEQUENT ANNUAL BUSINESS PLANS AND BUDGETS.

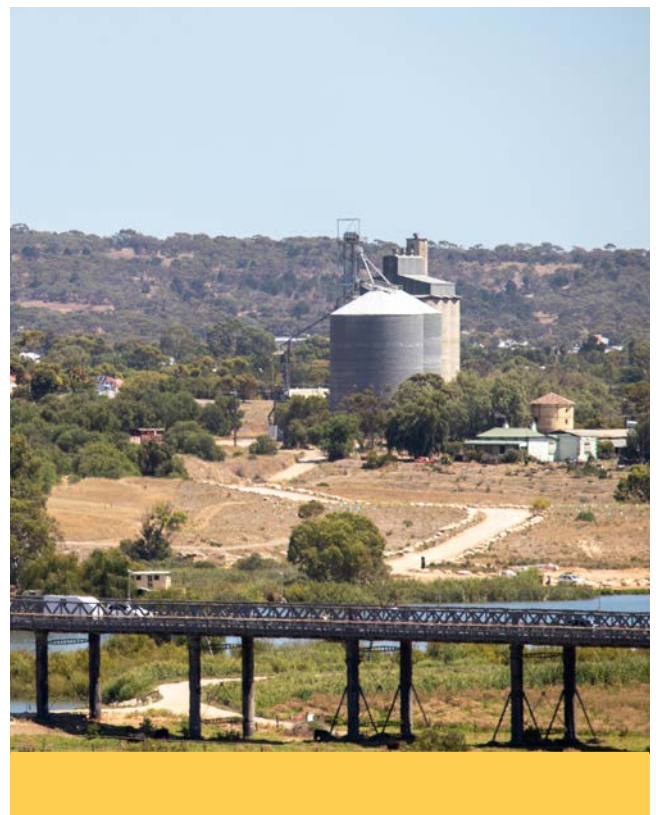
Council's Strategic Plan provides for Proud, Safe and Progressive Thriving Communities and creates opportunities for stakeholders to "Make It Yours".

Council has identified the fact "we are changing, we are creating an environment where you can make your own opportunities, make a home, make an investment and make memories."

An objective of our Plan promotes *Secure and Resilient Communities by ensuring we are a well prepared community that is safe, supportive and resilient.*

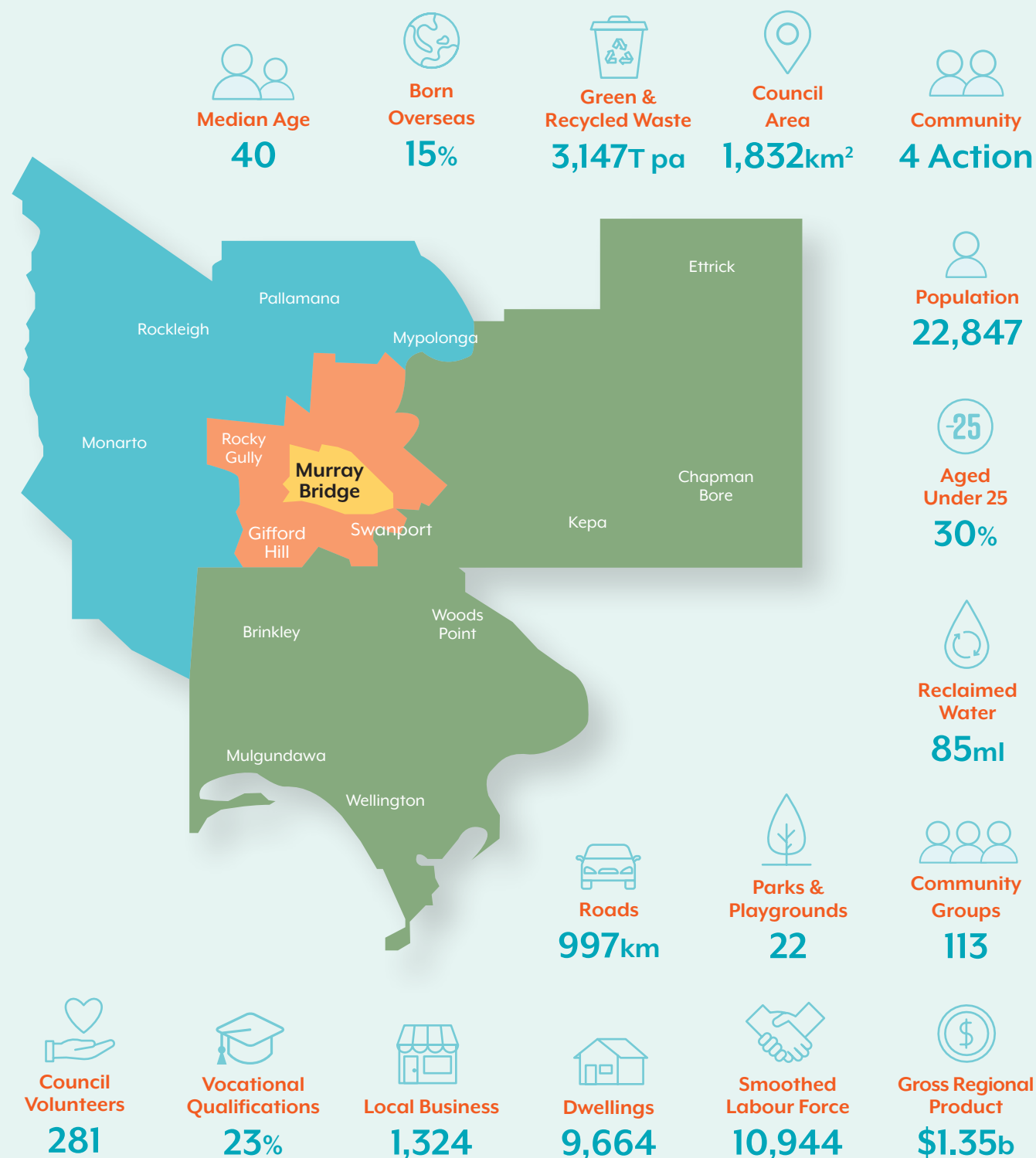
To ensure ongoing Community Sustainability this Emergency Management Plan identifies how Council's Strategic Plans and associated Strategies allow us to:

- plan and prepare for emergencies through its every day operations
- support Emergency Services in responding to emergencies
- support community recovery.



5.1 OUR COMMUNITY PROFILE

UNDERSTANDING OUR COMMUNITIES IS EXTREMELY IMPORTANT AND OUR ONGOING REFINEMENT OF COMMUNITY PROFILES WILL ALSO ASSIST IN ANY SUPPORT PROVIDED IN RECOVERY.



Traditional Owners – Ngarrindjeri

We acknowledge the Ngarrindjeri people as the traditional owners of this land on which we meet and work. We respect and acknowledge their spiritual connection as the custodians of this land and that their cultural heritage beliefs are still important to the living people today.

We recognise the living culture and combined energies of the Ngarrindjeri people our global pioneers and community members today for their unique contribution to the life of our region.

Our History

Our Regional City, Murray Bridge, was established in 1874 as a vital link in South Australia's fledgling trade routes. Its proximity to the river, and convenient distance from Adelaide and the eastern states, has seen Murray Bridge transform into the Murraylands' largest regional, commercial hub.

Murray Bridge is surrounded by regional townships providing alternative lifestyle and employment options to our Community.

The topography of Murray Bridge varies considerably, ranging from the elevated White Hill escarpment to the low lying flats near the River. The River Murray is a key geographic feature that defines the area.

The Rural City of Murray Bridge is located approximately 75 kilometres to the South East of Adelaide and is transversed by major road and rail corridors.

The mighty Murray River, home to the Ngarrindjeri people for centuries, is the lifeblood of Murray Bridge, providing water, recreation, jobs, and a lifestyle that is the envy of other regions.

The Rural City of Murray Bridge Community Plan 2016-2032 articulates the Community Vision – Thriving Communities. The Rural City of Murray Bridge Strategic Plan 2020-2024 identifies that Murray Bridge is changing with a focus on creating an environment where you can make your own opportunities, make a home, an investment, and make memories.

As Adelaide's population and economy expands over the coming decades Murray Bridge will see unprecedented growth and is on track to become one of the largest regional cities in South Australia.

The last five years have seen significant investment in the region, beyond the aspirations of the Council's 2015 Economic Development Strategy.

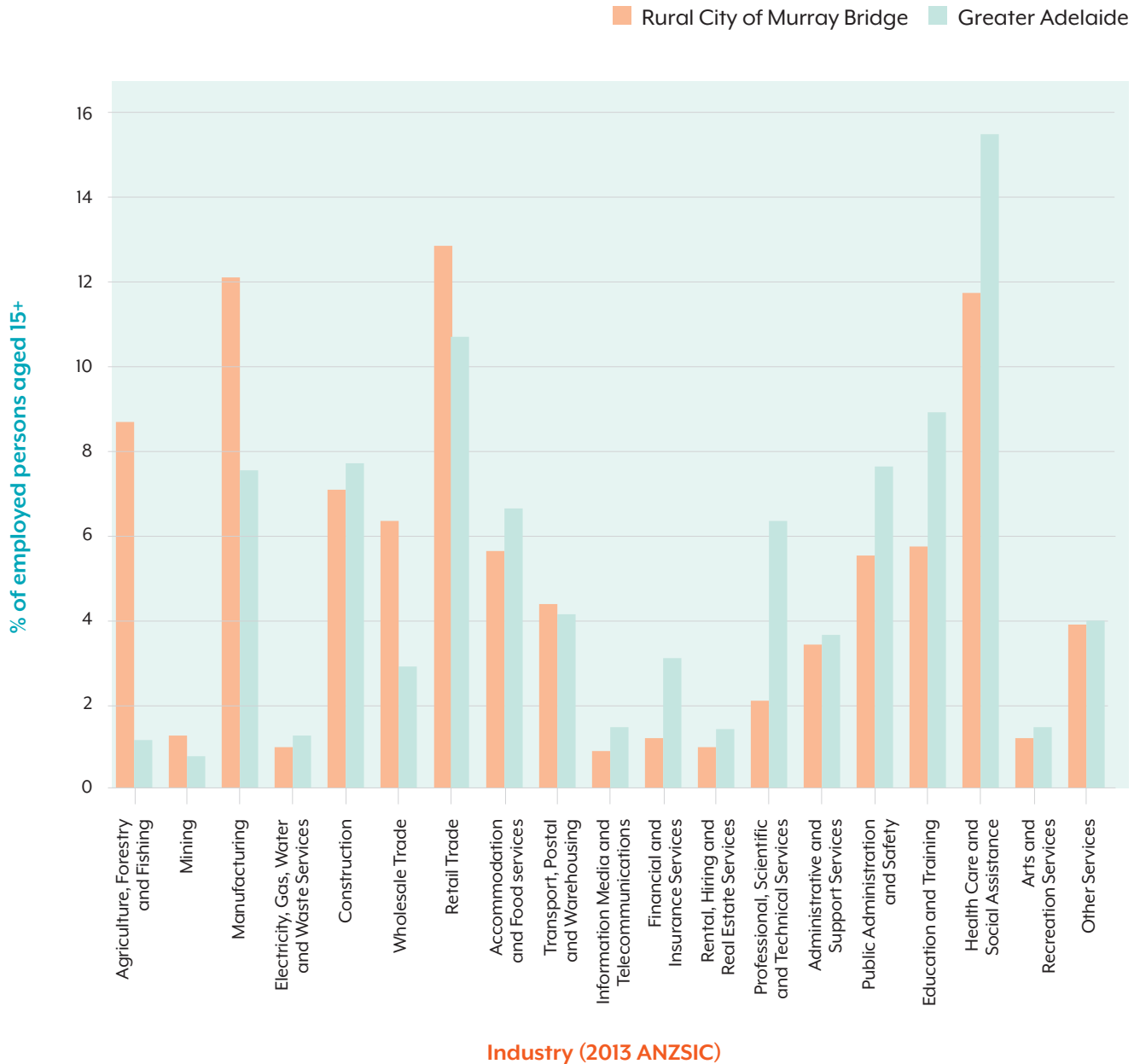
Council's 2020-2032 Economic Development Strategy reflects over \$1b in private and government investment set to be realised over the coming five years and recognises the Rural City of Murray Bridge must position itself to ensure that the development results in a sustainable, thriving community.

The City's population is forecast to rise to 26,000 by 2030 underpinned by additional jobs which are forecast to be added to the region.

COMMUNITY ASSETS & INFRASTRUCTURE

Industry sector of employment, 2016

Total employed persons



Source: Australian Bureau of Statistics, Census of population and Housing, 2016 (Usual residence data).
Compiled and presented in profile .id by .id (informed decisions).



Major Assets & Infrastructure

- Adelaide to Melbourne Road & Rail infrastructure
 - Road Bridges over River Murray (x2) ; Rail Bridge over River Murray
- Helipad (Murray Bridge Soldiers Memorial Hospital)
- SA Water infrastructure
- Electricity infrastructure
- Gas infrastructure
- Telecommunications infrastructure
- Communications infrastructure
- Waste Water infrastructure
- Emergency Service infrastructure
 - SAPOL
 - CFS
 - MFS
 - SAAS
 - SES
 - Army Range
 - St John
- Medical Services
 - Murray Bridge Soldiers Memorial Hospital
 - Medical Clinics
 - Dental Clinics
 - Allied Health
- Airports (Private) x 2
- Adelaide Hills Regional Waste Service
- Natural Assets
 - River Murray
 - Conservation Parks
- Cultural Assets
 - Indigenous
 - Early European
- Sporting & Recreation Facilities.

Key Services

- Education
 - Tertiary
 - Secondary
 - Primary
 - Pre School
- Aged Care & Disability Support Services
 - Residential Care facilities
 - Retirement Villages
 - In home support
- Local Government Assets
- Federal and State Government Services
- Community & Sporting Organisations
- Fuel Stations
- Industry / Commercial business
- Media Outlets
- Not for Profit Organisations
- Primary Production / Food Suppliers
- Professional Service
- Tourism and Hospitality providers
- Transport Services.

Townships & Locality Communities

- | | |
|-----------------|----------------|
| • Brinkley | • Mypolonga |
| • Burdett | • Palamanna |
| • Callington | • Riverglen |
| • Chapman Bore | • Rockleigh |
| • Ettrick | • Sunnyside |
| • Gifford Hill | • Toora |
| • Jervois | • Wall Flat |
| • Monarto | • Wellington |
| • Monteith | • White Hill |
| • Murray Bridge | • White Sands |
| • Mulgundawah | • Woods Point. |



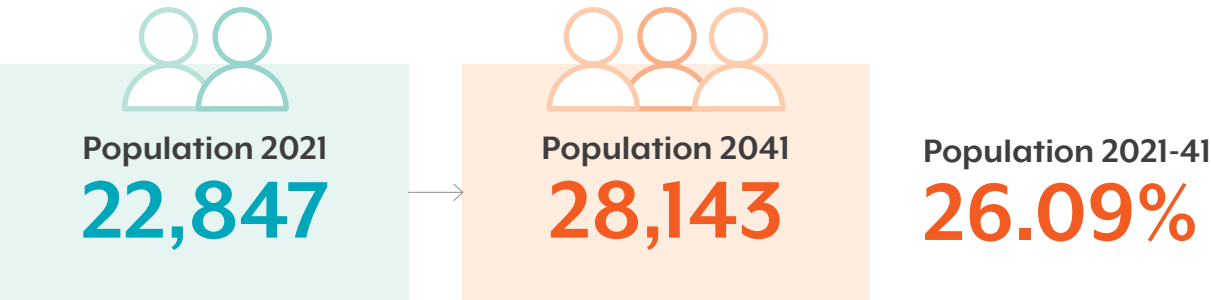
Rural City of Murray Bridge
population forecasts

The Rural City of Murray Bridge population forecast for 2021 is 22,320 and is forecast to grow to 28,143 by 2041.

The current Estimated Residential Population is estimated at 22,495, which is considered as a more accurate reflection of the current actual population.

The Rural City of Murray Bridge population and household forecasts present what is driving population change in the community and how the population, age structure and household types will change each year between 2016 and 2041.

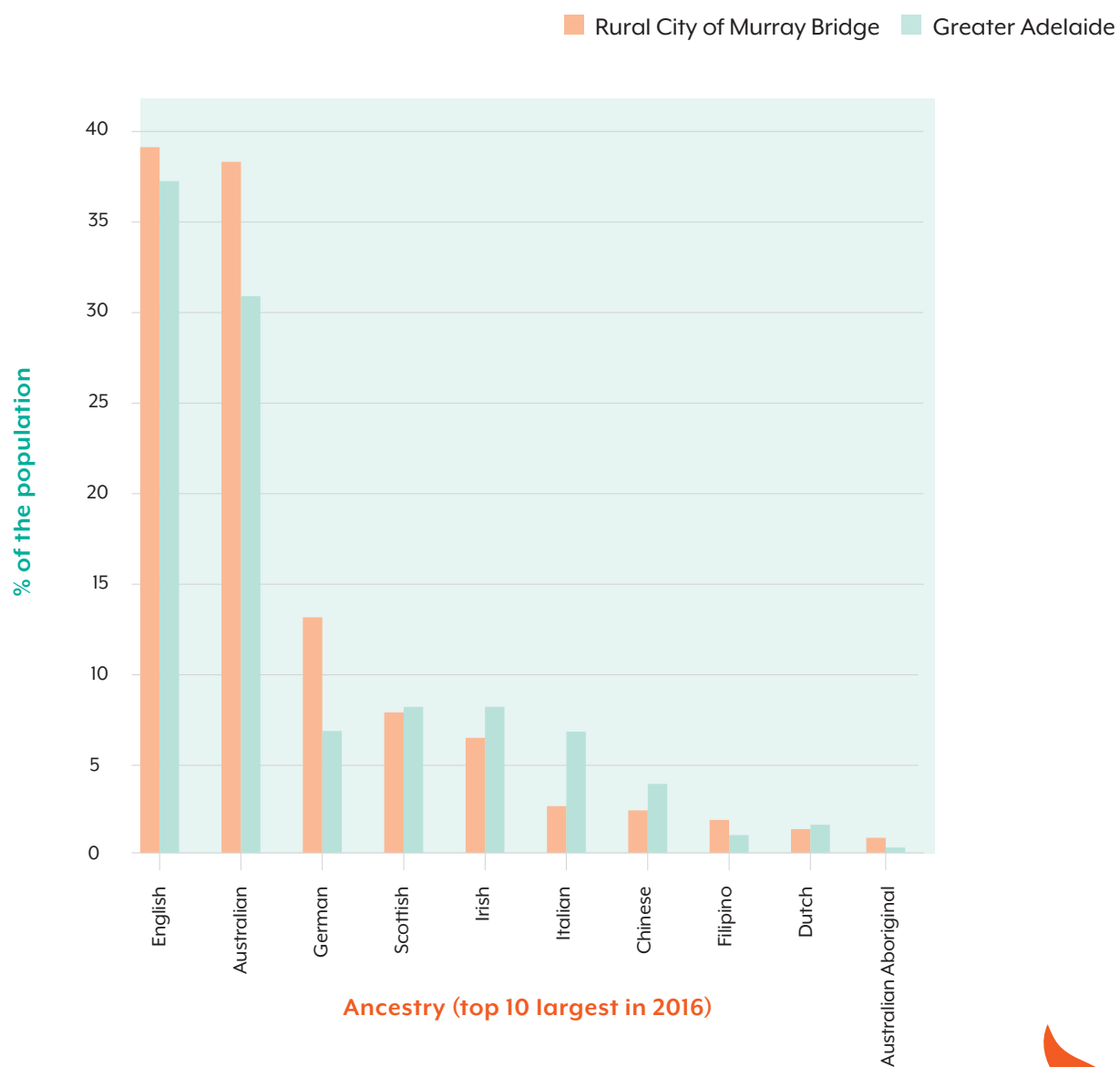
The forecasts are designed to provide community groups, Council, investors, business, students and the general public with knowledge to make confident decisions about the future.



Source: Population and households forecasts, 2016 to 2041, prepared by .id (informed decisions), May 2018.



Ancestry, 2016



Source: Australian Bureau of Statistics, Census of population and Housing, 2016 (Usual residence data).
Compiled and presented in profile .id by .id (informed decisions).

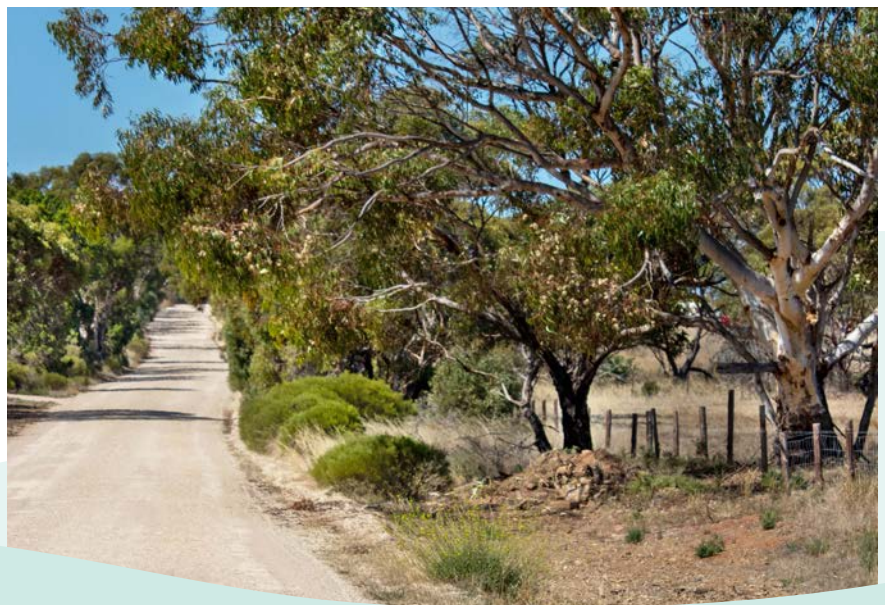




5.2 OUR PLANNING AND PREPARATION

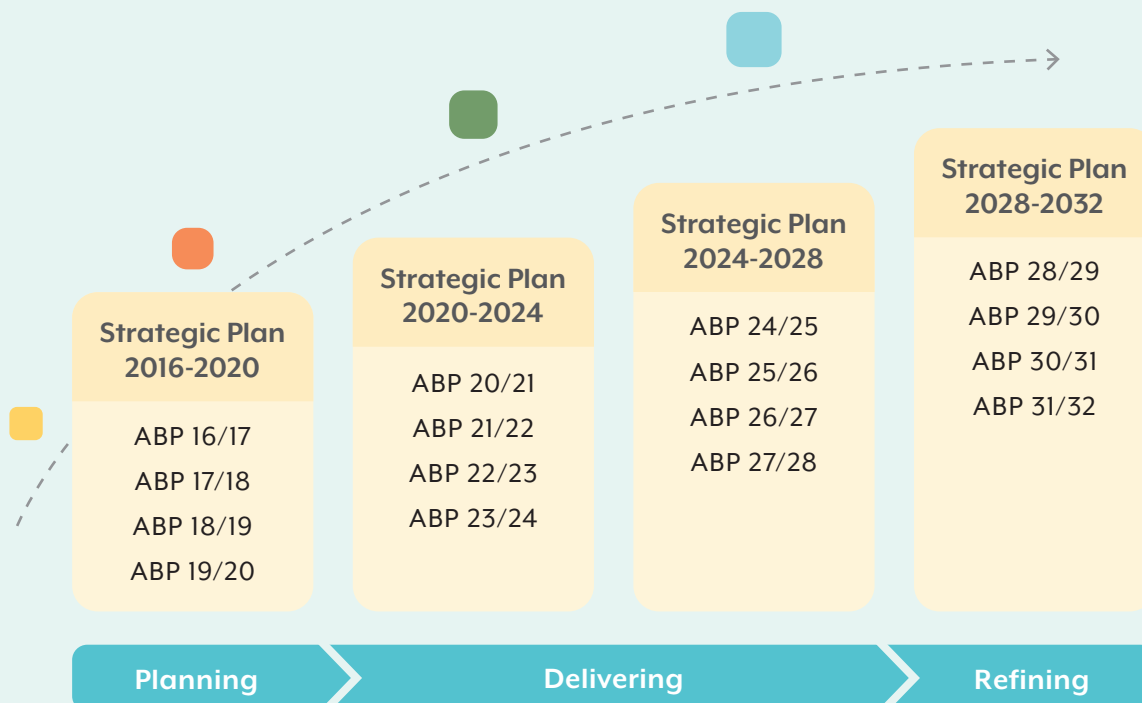
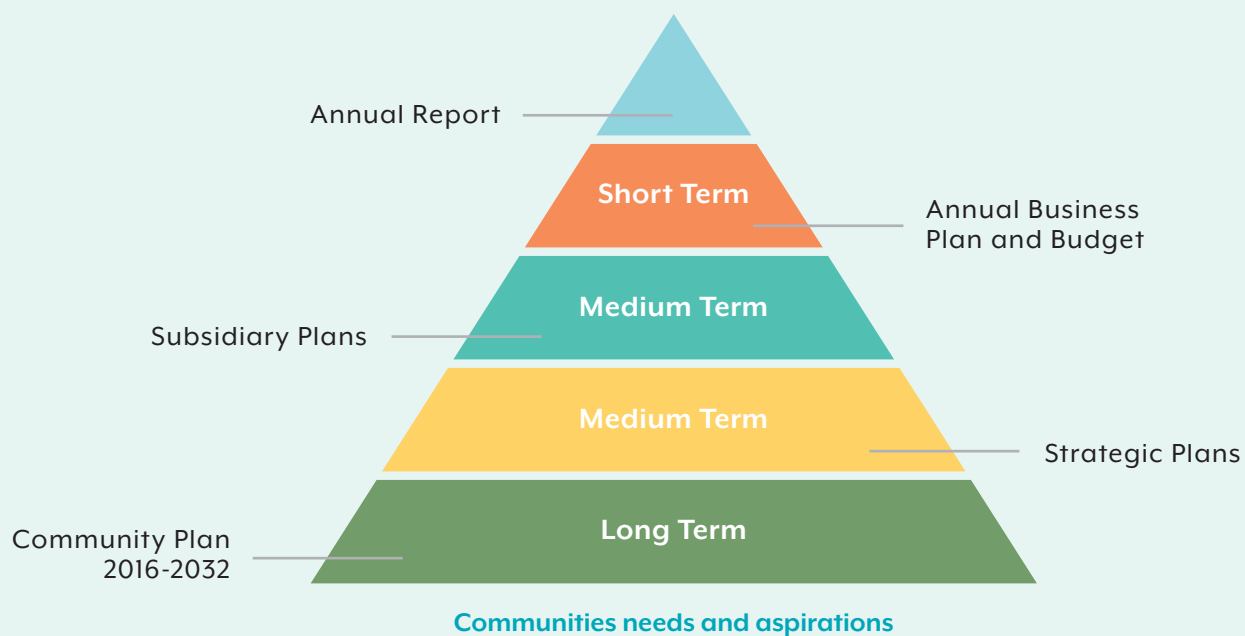
Our Planning and Preparation Goals are:

Goal 1	Increase understanding of Emergency Hazards and Risk to Community and Council.
Goal 2	Ensure disaster risk is integrated into strategic and operational plans and decision making.
Goal 3	Building Community and Council resilience for emergencies through engagement with Community around local risks.
Goal 4	Build collaborative relationships with Emergency Services.



Our strategic plans and associated strategies

Rural City of Murray Bridge Community Plan





Council activities that contribute planning and preparation

Rural City of Murray Bridge currently undertakes the following activities, as part of its general operations in accordance with Legislation and Plans and Strategies endorsed by Council to reduce the disaster risk through planning and prevention to its communities.

- Advocacy
- Building safety
- Bushfire management planning
- Bushfire ready plans in liaison with CFS
- Collaborative partnerships with community stakeholders to develop effective networks
- Communication & engagement
- Community development
- Community grants
- Development assessment processes
- Environmental management
- Flood barriers/mitigation works
- Flood plain mapping
- Land use planning
- Libraries.
- Maintain asset, liability and WHS insurance
- Maintenance of asset, liability and work health and safety insurances
- Open space management
- Provision of public information
- Public health measures
- Riverbank bank collapse mapping
- Road maintenance, renewal and upgrade
- Starclub program
- Stormwater infrastructure maintenance, renewal and upgrade
- Tree management planning and operations
- Volunteer management.



Council activities that contribute to incident operations

Rural City of Murray Bridge currently undertakes the following activities, as part of its general operations in accordance with Legislation and Plans and Strategies endorsed by Council to incident operations to support Emergency Services and our communities.

- Advocacy
- Collaborative partnerships
- Communication & engagement
- Community facilities
- Community networks
- Environmental health services
- Environmental management
- Flood mitigation
- Heatwave (cool venues)
- Local knowledge
- Mineral earth breaks
- Plant and equipment to support Emergency Services
- Sandbagging
- Specialised and skilled staff
- Traffic management
- Tree trimming
- Waste management.

Council activities that contribute to recovery

Rural City of Murray Bridge currently undertakes the following activities, as part of its general operations in accordance with Legislation and Plans and Strategies endorsed by Council to assist in Community Led Recovery.

- Advocacy
- Animal management
- Asset management, maintenance, renewal and upgrade
- Building services
- Collaborative partnerships with stakeholders
- Communication & engagement
- Community development
- Community grant programs
- Economic development
- Environmental health services
- Environmental management
- Events
- Open space management
- Planning & development services
- Road maintenance renewal and upgrade
- Starclub program
- Stormwater infrastructure maintenance, renewal and upgrade
- Traffic management
- Waste services.

5.3 OUR RESPONSE APPROACH

Incident operations to assist our Response

Goal 5

Improve systems, training and processes that enable Council to support the Community and Emergency Services during incidents.



Council works closely with local Emergency Services to build relationships to ensure we understand the types of support they may require when responding to emergencies in our Community.

It is important to understand that Council does not take a lead role in responding to Community Emergencies but provides an important support role to them.

The following table identifies the Regional entity we relate directly to:

Entity	Region
Emergency Management Zone	Murraylands Riverland Local Government Association
Local Service Area (LSA)	Murraylands and Riverland
CFS	Region 3
MFS	Limestone Coast
SES	Murray Bridge and Districts
SA Ambulance	SA Country Region
Local Health Network	Riverland Mallee Coorong Local Health Network
Bio Security	Region
Regional LGA	Murraylands & Riverland Local Government Association

In responding to an incident we use the following process:

Incident Level	Description
Council Level 1	Council is able to resolve incident within existing resources in a business as usual capacity. Task requires focused action, coordination and direction.
Council Level 2	The incident is more complex in size, resource or risk and Council is required to assign additional resources above business as usual.
Council Level 3	The incident is unable to be managed using existing Council resources and external support is required.

It is important to understand that should our Council be unable to provide the necessary support to Emergency Services, the Local Government Functional Support Team will assist and arrange additional support from other Councils to ensure our Community has the necessary response in place from Local Government.



Our Response process has 4 stages as shown below.



Standby

Is the normal 'day to day' or 'business as usual' mode for the Council.

This mode is for when there are no active emergencies requiring the involvement of the Council. The Council is active and is operating on an ongoing basis as well as a planning and maintenance role.

Activities considered appropriate in this mode are:

- preparing and reviewing plans
- training and educating personnel
- exercising and testing processes and procedures
- maintaining situational awareness.

Alert

The Council may move to **Alert Mode** on receipt of any warnings, or information relating to any emergency that may or is about to impact Council. Information is to be relayed to all relevant key personnel and organisations that may become involved in the incident. It is possible to move back to **Standby Mode** if it becomes evident that there is no need for the Council to move into **Operations Mode**.

Activities considered appropriate in this mode are:

- alerting key personnel and confirming their availability to be rostered
- conversations about the merits of establishing the Operations Centre
- determining communication arrangements
- maintaining situational awareness – including gaining an understanding of activities/events occurring or planned to occur in the Rural City of Murray Bridge area
- in the case of fire danger, monitoring of the real time fire danger index.

Operations

The Council may move to **Operations Mode** when an emergency is impacting on the Council area or the support of the Council is requested by the control agency or via the LGFSG.

Activities considered appropriate in this mode are:

- establish Operations Centre
- mobilise personnel/equipment as requested and in accordance with i-Responda operating platform
- mobilise IMT local liaison staff and ZEST as required
- support community relief and recovery needs as required.

Restore

The Council may move to **Restore Mode** when Council **Operations** has ceased.

Activities considered appropriate in this mode are:

- debrief and stand down Council personnel on completion of final tasks
- coordinate return of deployed Council resources
- complete final reports, capturing of costs, damages and supporting documentation and incident LOGS
- review emergency events and effectiveness of Council's response in relation to this plan
- transition to recovery arrangements
- close Operations Centre.

5.4 OUR RECOVERY APPROACH



Recovery

Goal 6

Develop a shared understanding of Council's role in recovery following a major incident.

We acknowledge the impact an emergency incident can have on our Community and wider region.

In providing assistance to our Community in recovery our Strategic Plans and associated Strategies play an important role in identifying the support programs.

Council aims to be flexible in its approach to Recovery operations and understands it may take several years to be fully restored. Council will work with the Community.

State Led Recovery

Council will actively engage and advocate on behalf of our Community. Importantly we will assist you lead your Recovery and work with you to ensure we understand your needs and endeavor to arrange the support you require.

Council's Strategic Plans and associated strategies provide many opportunities to assist with Recovery.

Locally Led Recovery

Council will actively engage with you to assist you lead your Recovery.

We will work with you to ensure we understand your needs and endeavor to arrange the support you require.

Council's Strategic Plans and associated strategies provide many opportunities to assist with Recovery and importantly advocate on behalf of our Community.

As each recovery operation will need to consider different circumstances, Council will assess and provide its response in accordance the specific requirements and remain flexible in its approach.



6 RISK ASSESSMENTS

THE RURAL CITY OF MURRAY BRIDGE HAS UNDERTAKEN AN EMERGENCY RISK ASSESSMENT AT THE LOCAL LEVEL TO IDENTIFY THE RISKS MOST RELEVANT TO COUNCIL AND THE COMMUNITY.

The approach taken was a threefold process

- Participation in the Murray Mallee Zone Emergency Management Committee Key Hazards & Risk Summary (2018)
- The Council Ready Program (LGA SA) conducted review of all current Council and regional strategies and plans to identify emergency hazards and risks. A structured workshop with Council's Leadership Team was held to collect information and to undertake a risk review and validation.
- Engagement has occurred with Emergency Services to validate the information
- Engagement with local Communities will occur to further inform revisions of this Plan.

Council's Risk Management Framework is consistent with the guidelines and principles of risk management as set out in ISO31000:2018.




This work also builds upon the Zone Emergency Management Plan risk register for Murray and Mallee Zone that was developed using the National Emergency Risk Assessment Guidelines (NERAG). NERAG provides a contextualised emergency risk assessment methodology consistent with the ISO31000:2018.

The Murray Mallee Bushfire Management Plan also informs Council's Emergency Management Plan.

To assist in understanding the location of the hazards and risks, Council undertook spatial mapping of the values and threats as part of the process in evaluating emergency risks to Council and community. These risks have been mapped into Council's Geographic Information System (GIS).

As a result of the risk assessment, **the priority emergency risks** for Rural City of Murray Bridge have been identified. Council will work with identified stakeholders and others not identified to ensure a whole of Community and agency approach is understood and compliments work undertaken by each body.

Council will work with the Community to raise resilience with liaison with Emergency Services, NGOs, Business and Community Organisations and individuals.



Risk	Impacts					Risk Rating	
Hazard	People	Economy	Social / Community	Environment	Public Admin	Inherent	Residual
All Hazards	●	●	●	●	●	High	Medium
Bushfire	●	●	●	●		High	High
Riverbank Collapse	●	●	●	●		High	High
Black System Event	●	●	●	●	●	High	Medium
Terrorism	●	●	●	●	●	High	Medium
Extreme Weather – Storm	●	●	●	●	●	High	Medium
Human Disease/ Pandemic	●	●	●		●	High	High
Extreme Weather – Heat	●	●	●	●		Medium	Medium
Drought	●	●	●	●		Medium	Medium
Animal & Plant Disease	●	●	●	●		Medium	Medium
Fire – Urban	●	●	●	●		Medium	Low
Hazardous Materials Spill	●		●	●		Medium	Low
Flood – High River	●	●	●	●		Low	Low

Information on mitigation strategies to reduce the inherent risk to residential risk is contained on the following pages.



Hazard	Risk to Council and Community	Residual Risk Rating Priority Actions	Engagement with Stakeholders
All Hazards	<ul style="list-style-type: none"> • Inability of Council to support Emergency Services in response • Damage to infrastructure and community assets • Lack of resilience in Community • Loss of life • Poor planning and communication. 	<ul style="list-style-type: none"> • Medium Priority Actions All	<ul style="list-style-type: none"> • SAPOL • CFS • MFS • SES • SAAS • NGOs • Community.
Fire – Bushfire / Rural	<ul style="list-style-type: none"> • Fires in locations identified in the Murray Mallee Bushfire Management Plan identified high and above • Fire from open grasslands – nothing to stop fire run • Fire within Conservation / National parks in region. 	<ul style="list-style-type: none"> • High Priority Actions 1.2, 1.3 2.1, 2.2, 2.3 3.1, 3.2, 4.2, 4.3, 4.4, 4.6 5.1, 5.2, 5.3, 5.4 6.1, 6.2, 6.3, 6.4	<ul style="list-style-type: none"> • CFS • Community.
Drought	<ul style="list-style-type: none"> • Loss of economic stability of region – Ability of regional industries and business to withstand. 	<ul style="list-style-type: none"> • Medium Priority Actions 1.1, 1.3 2.1, 2.2 3.1, 3.2, 4.1, 4.3, 4.5, 4.6 6.1, 6.2, 6.3, 6.4	<ul style="list-style-type: none"> • PIRSA • Community • Murraylands & Riverland Landscape Board.
Extreme weather – storm	<ul style="list-style-type: none"> • Damage to essential services (e.g. power, water, gas, food etc.) causing impact on residents and businesses • High rainfall leading to failure of CMWS and other infrastructure • Flash flooding of townships • Stormwater Management Plan failure. 	<ul style="list-style-type: none"> • Medium Priority Actions 1.1, 1.2, 1.3 2.1, 2.2 3.1, 3.2 4.1, 4.3, 4.4, 4.5, 4.6 5.1, 5.2, 5.3, 5.4 6.1, 6.2, 6.3, 6.4	<ul style="list-style-type: none"> • SES • CFS • DEW • SAPOL • SAHA • ac.care • RDA – Business Alliance • Community.
Extreme weather – heat	<ul style="list-style-type: none"> • Impacts on Council managed community infrastructure e.g. roads, parks and recreational facilities • Impacts on vulnerable members of the community • Impacts on tourism – e.g. park closures. 	<ul style="list-style-type: none"> • Medium Priority Actions 1.1, 1.2, 1.3 2.1, 2.2 3.1, 3.2, 3.3 3.1, 3.2, 4.1, 4.2, 4.3, 4.4, 4.5, 4.6 5.1, 5.2, 5.3, 5.4 6.1, 6.2, 6.3, 6.4	<ul style="list-style-type: none"> • SES • CFS • SAPOL • SAHA • ac.care • RDA – Business Alliance • Community.



Hazard	Risk to Council and Community	Residual Risk Rating Priority Actions	Engagement with Stakeholders
Flood – High River	<ul style="list-style-type: none"> • Flooding risk to isolated areas resulting in damage to infrastructure and private property • Flood moving and advance warning occurs. 	<ul style="list-style-type: none"> • Low Priority Actions 1.1, 1.3 2.1, 2.2 3.1, 3.2 4.1, 4.3, 4.4, 4.5, 4.6 5.1, 5.2, 5.3, 5.4 6.1, 6.2, 6.3, 6.4	<ul style="list-style-type: none"> • SES • DIT • DEW • Community.
Riverbank Collapse	<ul style="list-style-type: none"> • Damage to riverbank infrastructure/open space areas • Danger to life. 	<ul style="list-style-type: none"> • High Priority Actions 1.1, 1.3 2.1, 2.2, 2.4 3.1, 3.2 4.1, 4.3, 4.4, 4.5, 4.6 5.1, 5.2, 5.3, 5.4 6.1, 6.2, 6.3, 6.4	<ul style="list-style-type: none"> • SAPOL • SES • DEW • Community.
Fire – Urban	<ul style="list-style-type: none"> • Fire in structures resulting in loss of jobs and negative economic impact. 	<ul style="list-style-type: none"> • Low Priority Actions 1.1, 1.3 2.1, 2.2, 2.3 3.1, 3.2 4.1, 4.3, 4.4, 4.5, 4.6 5.1, 5.2, 5.3, 5.4 6.1, 6.2, 6.3, 6.4	<ul style="list-style-type: none"> • MFS • Community.
Hazardous Materials	<ul style="list-style-type: none"> • Spillage in River • Spillage on Freeway. 	<ul style="list-style-type: none"> • Low Priority Actions 1.1, 1.3 2.1, 2.3, 3.1, 3.2 4.1, 4.3, 4.4, 4.6 5.1, 5.2, 5.3, 5.4 6.1, 6.2, 6.3, 6.4	<ul style="list-style-type: none"> • EPA • DEW • Murraylands & Riverland Landscape Board • Community.
Animal and plant disease	<ul style="list-style-type: none"> • Import of disease affecting local horticulture and intensive agriculture industries. 	<ul style="list-style-type: none"> • Medium Priority Actions 1.1, 1.1, 1.3 2.1 3.1, 3.2 4.1, 4.3, 4.4, 4.6 5.1, 5.2, 5.3, 5.4 6.1, 6.2, 6.3, 6.4	<ul style="list-style-type: none"> • PIRSA • Community.

Hazard	Risk to Council and Community	Residual Risk Rating Priority Actions	Engagement with Stakeholders
Human Disease / Pandemic	<ul style="list-style-type: none"> • Danger to life • Loss of economic stability of region. 	<ul style="list-style-type: none"> • High Priority Actions 1.1, 1.3 2.1 3.1, 3.2 4.1, 4.3, 4.4, 4.5, 4.6 5.1, 5.2, 5.3, 5.4 6.1, 6.2, 6.3, 6.4	<ul style="list-style-type: none"> • SA Health • SAPOL • RDA – Business Alliance • Community.
Terrorism	<ul style="list-style-type: none"> • Incident impacting on access across river, via train, road • Incident impacting on water supply • Incident impacting an event. 	<ul style="list-style-type: none"> • Medium Priority Actions 1.1, 1.3 2.1, 2.3, 2.4 3.1, 3.2, 3.3 4.1, 4.3, 4.4, 4.6 5.1, 5.2, 5.3, 5.4 6.1, 6.2, 6.3, 6.4	<ul style="list-style-type: none"> • SAPOL • Community.
Black System Event – Extended Power outage	<ul style="list-style-type: none"> • Inability to deliver services • Impact on Community. 	<ul style="list-style-type: none"> • Medium Priority Actions 1.1, 1.3 2.1, 2.2 3.1, 3.2 4.1, 4.3, 4.4, 4.5, 4.6 5.1, 5.2, 5.3, 5.4 6.1, 6.2, 6.3, 6.4	<ul style="list-style-type: none"> • SAPOL • Community.

7 PRIORITY ACTIONS

7.1.1 PLANNING AND PREPARATION

Goal 1 Increase understanding of Emergency Hazards and Risk to Community and Council

Action

- | | |
|-----|--|
| 1.1 | Continue to participate in Murray Mallee Zone Emergency Management Committee |
| 1.2 | Continue to participate in Murray Mallee Bushfire Management Committee |
| 1.3 | Publish and communicate information about emergency risks for community and business in partnership with relevant emergency service, as appropriate (inclusive of multilingual communications) |



Goal 2 Ensure disaster risk is integrated into strategic and operational plans and decision making.

Action

- | | |
|-----|--|
| 2.1 | Ongoing review of strategic and operational plans in relation to Emergency Management |
| 2.2 | Ongoing review of suite of Asset Management plans in relation to Emergency Management |
| 2.3 | Continue to implement activities outlined in the Murray Mallee Bushfire Management Area Plan including inspections, hazard reduction and enforcement |
| 2.4 | Advocate for State Government engagement regarding regional management of riverbank collapse hazards |

Goal 3 Building Community and Council resilience for emergencies through engagement with Community around local risks

Action

- | | |
|-----|--|
| 3.1 | Incorporate emergency risk assessment outcomes into Council's Strategic Risk Register |
| 3.2 | Develop a regionally consistent approach to communications |
| 3.3 | Support Hazard Leaders to engage effectively with communities to improve awareness and education |

Goal 4 Build collaborative relationships with Emergency Services

Action

- | | |
|-----|--|
| 4.1 | Continue to participate in Murray Mallee Zone Emergency Management Committee |
| 4.2 | Continue to participate in Murray Mallee Bushfire Management Committee |
| 4.3 | Advocate with key agencies for specific disaster risk reduction awareness for identified hazards |
| 4.4 | Maintain and continue regular meetings with Emergency Services |
| 4.5 | Develop relationships with key community stakeholders |
| 4.6 | Develop positive working relationships with adjoining and regional Councils |

7.1.2 INCIDENT OPERATIONS TO ASSIST IN OUR RESPONSE

Goal 5 Improve systems, training and processes that enable Council to support the Community and Emergency Services during incidents

Action

- | | |
|-----|--|
| 5.1 | Include i-Responda and Incident Management training in our staff development program |
| 5.2 | Implement / Maintain Incident Operations arrangements |
| 5.3 | Actively Participate in the Zone Emergency Support Team (ZEST) exercises and during incidents |
| 5.4 | Scenario Testing / Training and exercising of incident operations |



7.1.3 RECOVERY

Goal 6 Develop a shared understanding of Council's role in recovery following a major incident

Action

- | | |
|-----|---|
| 6.1 | Develop recovery arrangements that clarify Council's roles, structures, partnerships and approaches in recovery |
| 6.2 | Provide leadership, co-ordination and advocacy when the community is impacted by emergencies |
| 6.3 | Support and facilitate the identification and assessment of community impact |
| 6.4 | Secure grants and other funding assistance to support disaster recovery |



8 CONSULT AND ENGAGE

THIS PLAN HAS BEEN DEVELOPED AND INFORMED THROUGH THE LOCAL GOVERNMENT ASSOCIATION COUNCIL READY PROGRAM AND THROUGH DISCUSSIONS WITH EMERGENCY SERVICES AND HAZARD LEADERS. IMPORTANTLY, THE PLAN HAS ALSO BEEN DEVELOPED THROUGH A COMMUNITY ENGAGEMENT PROCESS HELD DURING 2021 WITH OUTER TOWN COMMUNITIES.

THE RURAL CITY OF MURRAY BRIDGE HAS ADOPTED THE APPROACH OF ENSURING STRONG COLLABORATIVE PARTNERSHIPS WITH EMERGENCY SERVICES, GOVERNMENT AND NON-GOVERNMENT ORGANISATIONS ALONG WITH LOCAL COMMUNITY NETWORKS TO MINIMISE THREATS AND CONTRIBUTE TO THE SAFETY AND WELLBEING OF OUR COMMUNITY AND VISITORS.

This will be achieved through:

- annual briefing to Elected Members by Superintendent of Police and CFS Regional Commander
- CEO Meeting with Emergency Services (SAPOL, CFS, MFS, SES, SAAS) on a six monthly cycle
 - update on Council; Events; Seasonal risks
- meeting with State Government Agencies
 - on an annual basis via the Murray Mallee Zone Emergency Management Committee
 - as required locally to inform Community Profile data
- community BBQs with outertowns to be held six monthly joined with existing events where possible to increase awareness and resilience
 - engagement with Emergency Services & Council on local hazards and risk
 - to inform Community Profile data
- community BBQs within Township to be held annually to increase awareness and resilience and inform community profile data with
 - multicultural
 - sporting
 - vulnerable persons
 - youth
- supporting the CFS Community Education Program annually
- engagement to increase awareness and resilience and inform community profile data with:
 - business sector through the Murray Bridge Business Alliance, Murray Bridge Food Alliance, Murray River Lakes & Coorong Tourism Alliance and Regional Development Australia Murraylands & Riverland
 - utility service providers
 - Ngarrindjeri and First Peoples of the River Murray and Mallee
 - Medical Services
 - education providers
 - Aged Care & Disability Support Services
 - NGOs.

9 IMPLEMENTATION

THIS DOCUMENT HAS BEEN PREPARED BY THE CHIEF EXECUTIVE OFFICER OF THE RURAL CITY OF MURRAY BRIDGE IN ACCORDANCE WITH DELEGATIONS PROVIDED TO THE POSITION BY THE COUNCIL.

The Emergency Management Plan is a living document based on continuous improvement approach to ensure Council is meeting its legislative and Community responsibilities.

Consultation with Elected Members, Staff, Emergency Services and relevant Local Government Authorities will occur as part of Council's continuous improvement approach to Community Emergency Management practices.

Resourcing of the Plan will be reviewed annually through Council's Annual Business Plan and Budget deliberations.

This Plan provides strategic guidance to Council's Operational Plans for Community Emergency Incident Response and Council's own Business Continuity Plan.



10 APPENDIX 1 STAKEHOLDERS

It is acknowledged this is not an exhaustive list and will be continually updated.

Federal State Government Agencies

- Australia Post
- Centrelink
- Country Fire Service Region 3
- Courts Authority
- Community Correctional Services
- Department for Correctional Services
- Department for Education and Child Development
- Department for Environment and Water
- Department for Defence
- Department of Transport
- Environmental Protection Agency
- Federal Member for Parliament
- Murraylands and Riverland Landscape Board
- Metropolitan Fire Service
- National Parks and Wildlife
- PIRSA
- Riverland Mallee Coorong Local Health Network
- Service SA
- South Australian Ambulance Service
- State Emergency Service
- State Member for Parliament
- SA Housing Authority
- South Australia Police
- SA Water.

Local Government

- Adelaide Hills Council
- Adelaide Hills Regional Waste Management Authority
- Alexandrina Council
- Coorong Council
- District Council of Karoonda East Murray
- Local Government Association
- Mid Murray Council
- Mount Barker District Council
- Murray Darling Association Region 6
- Murraylands and Riverland Local Government Association
- Rural City of Murray Bridge
- Southern Mallee Council.

Major Infrastructure providers

- Major Road infrastructure providers
- Rail infrastructure providers
- Water infrastructure providers
- Electricity infrastructure providers
- Gas infrastructure providers
- Telecommunications infrastructure providers
- Communications infrastructure providers
- Waste Water infrastructure providers.

Emergency Services

- SAPOL
- CFS
- MFS
- SAAS
- SES
- St John
- Army Range.

Medical Services

- Murray Bridge Soldiers Memorial Hospital

Medical Clinics

- Bridge Clinic
- Murray Bridge Day & Night Surgery
- Bridgeview Family Clinic

Dental Clinics

- Bridge Dental
- Murraylands Dental Clinic
- Riverview Dental Clinic
- Allied Health Providers.

Airports (Private)

- Pallamana Airfield
- Rollos Airfield.

Adelaide Hills Regional Waste Service

- Brinkley Waste Depot
- Brinkley Reuse Centre.

Key Services

Education

Tertiary

- TAFE
- Murray River Study Hub

Secondary

- Murray Bridge High School
- Tyndall College
- Unity College

Primary

- Murray Bridge Fraser Park School
- Murray Bridge Jervois Primary School
- Murray Bridge North School
- Murray Bridge South School
- Murray Bridge Special School
- Mypolonga Primary School
- St Josephs Primary School
- Tyndall College
- Unity College

Kindergarten/Child Care

- Concordia Kindergarten
- Fraser Park Child Parent Centre
- Kin Kin Child Care Centre
- Murray Bridge Community Childrens Centre
- Murray Bridge Preschool Kindergarten
- Tinyeri Childrens Centre

Aged Care & Disability Support Services

Residential Care facilities

- Lerwin Aged Care Facility
- Resthaven

Retirement Villages

- Murray Bridge Lutheran Homes
- Murray Mallee Aged Care Group
- Murraylands Retirement Village
- RSL Care

In home support providers.

Food Supply / Primary Producers

- Murraylands Food Alliance
- Aldi
- Beston
- Big River Pork
- Coles
- Drakes
- Hansen Farms
- IGA
- Inghams
- Rinaldi Vegetable Growers
- Rivpak
- Swanport Harvest
- Thomas Foods International
- Woolworths.

Fuel Stations

- Caltex
- OTR
- United.

Media Outlets

- Murray Bridge News
- Murray Valley Standard
- Power FM.

Transport Services

- Link SA
- Murray Bridge Taxi
- Des Taxi.

Peak Bodies

- Murraylands and Riverland Regional Development Association
- Murray Bridge Business Alliance
- Murraylands Food Alliance
- Murray River Lakes & Coorong Tourism Alliance.

Industry / Commercial

Not for Profit Organisations



Traditional Owners

- Ngarrindjeri Regional Authority
- Ngarrindjeri Empowered Communities
- Moorundi Aboriginal Community Controlled Health Service
- Aboriginal Families Support Service
- Kalparin Community
- Ngarrindjeri Aboriginal Corporation.

Professional Service Providers

- Banking
- Insurance
- Accountants
- Lawyers
- Real Estate Agents
- Conveyancers.

Community & Sporting Organisations

- Ag Bureaus
- Art groups
- Basketball
- Bowls
- Church groups
- Cricket
- Croquet
- CWA
- Football
- Inner Wheel of Mobilong
- Kiwanis Club of Murray Bridge
- Lions Club of Murray Bridge
- Murray Bridge City Lions
- Netball
- Probus Clubs
- Rotary Club of Mobilong
- Rotary Club of Murray Bridge
- Rowing
- RSL
- Soccer
- Soroptimist International Murray Bridge
- Swimming
- Tennis
- Township & Localities organisations
- Volunteer organisations.

Townships & Localities Communities

- Brinkley
- Burdett
- Callington
- Champan Bore
- Ettrick
- Gifford Hill
- Jervois
- Monarto
- Monteith
- Murray Bridge
- Mulgundawah
- Mypoolonga
- Palamanna
- Riverglen
- Rockleigh
- Sunnyside
- Toora
- Wall Flat
- Wellington
- White Hill
- White Sands
- Woods Point.





11 APPENDIX 2 USEFUL INFORMATION in an emergency

THE RURAL CITY OF MURRAY BRIDGE IS IN THE MURRAYLANDS DISTRICT FOR EMERGENCY MANAGEMENT MESSAGING.

In South Australia validated information on emergencies can be obtained through TV and radio emergency broadcast partners such as ABC Local Radio, FIVEaa Radio, Sky News Television, ABC News 24, Power FM and 5Mu.

SA Government Web page

sa.gov.au/topics/emergencies-and-safety

The **Alert SA Mobile App** provides timely, relevant bushfire information to the South Australian Community.

alert.sa.gov.au

Emergency+ app (triplezero.gov.au)

Download the free Emergency+ app for iOS and Android devices which:

- provides you with information about when to call Triple Zero
- provides you with information about who to call in non-emergency situations
- assists you to dial the relevant number
- displays the GPS coordinates of the phone's location that you can read to the emergency operator
- provides you with what3words to identify your location easily, using 3 distinct words to identify your 3mx3m location.

About | [what3words](#).

Emergency Road Closures

Traffic SA

Department of Planning,
Transport
and Infrastructure

Addsight Smartphone App

AddInsight
Traffic Intelligence System

SAPOL – Emergency Information and Alerts

(police.sa.gov.au)

Council will share validated information from these sources and/or from the Co-ordinating Agency, nominated Hazard Leader and/or Control Agency through its communication platforms via its:

- Electronic Notice and VMS Boards
- Facebook page
- Webpage
[murraybridge.sa.gov.au/
services/your-safety/
emergency-management](http://murraybridge.sa.gov.au/services/your-safety/emergency-management)

Culturally and Linguistically Diverse Resources (CALD)

CFS Fire

CFS Languages other
than English
CFS Prepare for a fire

SES Flood, Storm, Heatwave SASES Translated Resources

The Rural City of Murray Bridge
is in the Murraylands Fire District.

CFS fact sheet

AUSTRALIAN WARNING SYSTEM

As part of a new Australian Warning System, the way we display incidents on our website and the AlertSA app is changing.

There are three levels of bushfire warnings to look out for.

**Advice****Bushfire Advice Message**

A fire has started. There is no immediate danger. Stay up to date in case the situation changes.

**Watch and Act****Bushfire Watch and Act Message**

There is a heightened level of threat. Conditions are changing and you need to start taking action now to protect you and your family.

**Emergency Warning****Bushfire Emergency Warning Messages**

An Emergency Warning is the highest level Bushfire Alert. You may be in danger and need to take action immediately. Any delay now puts your life at risk.

When these incidents are shown, there may be detailed information about what to do to protect you and your family.

Over time, more types of incidents in more places around the country, will use the new system.

CFS list of Bushfire Safer Places and Bushfire Last Resort Refuges**CFS Bushfire Safer Places**

(cfs.sa.gov.au/prepare-for-a-fire/be-prepared/bushfire-safer-places)

CFS Make a Plan (cfs.sa.gov.au/prepare-for-a-fire/make-a-plan/)

Residents and visitors are encouraged to ensure they have prepared their 5 Minute Plan/Bushfire Survival Plan – refer CFS website

MURRAY BRIDGE BUSHFIRE SAFER PLACE LOCATION shown in yellow



State Emergency Service warnings

ses.sa.gov.au/incidents-and-warnings/about-sases-warnings/

The Rural City of Murray Bridge is in the **Murraylands** warning zone for:

- high river
- extreme weather activities storm and heatwave.

Advice message

We will issue an Advice Message for floods or storms that may pose a threat to property or public safety or events where:

- an incident has been reported and we are attending but no further information is available (incident notification)
- An incident is producing an undesirable effect in an area that may cause concern to the public.

The SASES State Coordinator wishes to advise the public of a specific event.

We will also issue an Advice level warning message for a district experiencing a low intensity heatwave.

Watch and Act message

We will regularly issue Watch and Act messages for incidents that pose a localised threat to property or public safety where:

- an incident is threatening or is a potential threat to public safety in the immediate area of the incident
- an incident is producing an undesirable effect in an area that may cause concern to the public on a day of elevated danger
- the SASES State Coordinator wishes to advise the public of a specific event.

We will also issue a Watch and Act level warning message for a district experiencing a severe heatwave.

Emergency warning message

Emergency Warning messages are the highest level of warning regarding an incident. They will be issued for a wide area community impact when:

- the risk of loss of life or threat to properties is almost certain or has occurred; or
- where special circumstances exist and a message is approved by the State Coordinator for example when life or property has been lost.

We will also issue an Emergency Warning message for a district experiencing an extreme heatwave.

Advice for reduced threat

We will issue a Reduced Threat message when the threat to the community has reduced.

All incidents that have had an Advice, Watch and Act or Emergency Warning message issued will be finalised with an Advice – Reduced Threat message.

Community readiness alerts

We will issue this alert when there's a forecast for dangerous heavy rain, wind, thunderstorms or heatwave. It is intended to give you enough notice for you to take action to make sure you and your family stay safe. This could include:

- making sure you have enough food, water, medication and pet food so you don't need to go out during a storm or heatwave
- collecting sandbags before heavy rain begins to fall
- preparing your home by keeping your backyard tidy before a thunderstorm or strong wind hit
- cooling your home before a heatwave by closing your blinds and curtains during the day
- checking in with family, friends and neighbours to make sure they're prepared for the forecast weather.

Further resources on SASES resources

- flood
- storm
- heatwave.







The Rural City of
MURRAY
BRIDGE

2 SEVENTH STREET
PO BOX 421
MURRAY BRIDGE, SA 5253

T 08 8539 1100

W murraybridge.sa.gov.au

E council@murraybridge.sa.gov.au