

# RURAL CITY OF MURRAY BRIDGE

## SPORT, RECREATION & OPEN SPACE STRATEGY

OCT 2013



MURRAY BRIDGE FROM PRINCES HIGHWAY

### VOLUME III: OPEN SPACE STRATEGY

TREDEWELL

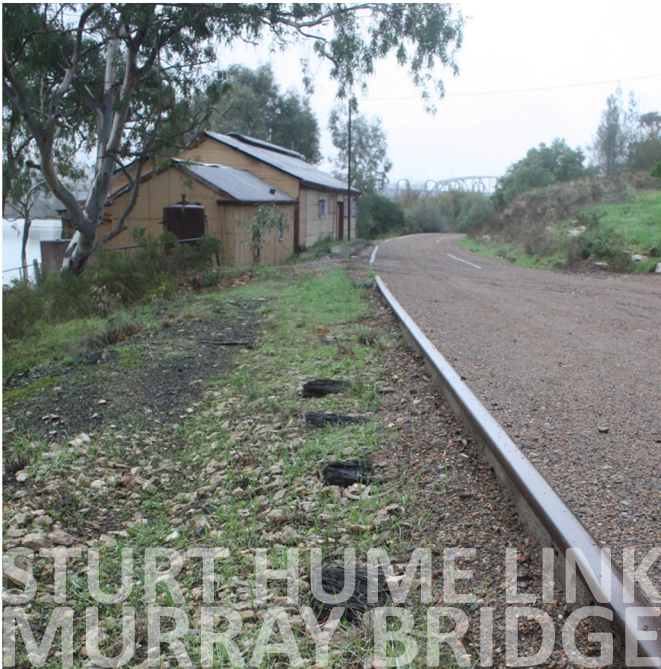
in association with

ASPECT Studios

urps



DIAMOND PARK  
MURRAY BRIDGE



STURT HUME LINK  
MURRAY BRIDGE



THIELE RESERVE  
MURRAY BRIDGE EAST



The Rural City of  
MURRAY  
BRIDGE

Bridge to Opportunity





---

## DISCLAIMER

While every effort has been made to ensure that the information contained within this report is complete, accurate and up to date, Tredwell Management Services make no warranty, representation or undertaking whether expressed or implied, nor do they assume any legal liability, whether direct or indirect, or responsibility for any errors or omissions.

---





## Contents

1. Introduction.....	1
1.1 Strategy Format.....	1
2. Open Space Issues & Principles.....	1
2.1 Future directions for Open Space.....	1
2.2 Key Principles for Action.....	1
3. Open Space Inventory and Classification.....	3
3.1 Open Space Inventory.....	3
3.2 Open Space Classification.....	3
4. Existing Open Space Provision.....	3
4.1 Overview.....	3
4.2 Murray Bridge.....	3
4.3 Outlying Areas.....	15
4.4 Wetlands.....	20
4.5 Drainage/Water Retention.....	21
4.6 Cemeteries.....	23
4.7 Future provision within the region.....	24
5. Open Space Vision.....	28
6. Strategy and Action Plan.....	28

## Tables

Table 1: Strategy Priority Levels.....	28
Table 2: Indicative Cost Bracket.....	28
Table 3: Council Wide Open Space Strategies.....	39
Table 4: OSR1 Sturt Reserve.....	41
Table 5: OSR2 Sturt Reserve – Hume Reserve Link.....	42
Table 6: OSR3 Pine Park.....	43
Table 7: OSR4 Edwards Square.....	44
Table 8: OSR5 Diamond Park.....	45
Table 9: OSR6 War Memorial Playground.....	46
Table 10: OSR7 Showgrounds.....	47
Table 11: OSR8 Hume Reserve.....	48
Table 12: OSR9 Tamarisk Street Reserve.....	49
Table 13: OSR10 Le Messurier Oval.....	50
Table 14: OSR11 Johnstone Park.....	51
Table 15: OSR12 Christian Reserve.....	52

Table 16: OSR13 Homburg Park.....	53
Table 17: District Level Open Space Reserves.....	54
Table 18: OSR18 Wattle Street Reserve.....	55
Table 19: OSR19 Adelaide Road Plantation.....	56
Table 20: OSR20 Carey's Park.....	57
Table 21: OSR21 Watts Road Stone Reserve.....	58
Table 22: OSR22 Murray Park.....	59
Table 23: OSR23 Plover Park.....	60
Table 24: OSR24 Wickens Reserve.....	61
Table 25: OSR25 Long Island Reserve.....	62
Table 26: OSR26 Thiele Reserve.....	63
Table 27: OSR27 Vanderzon Reserve.....	64
Table 28: OSR28 Swanport Reserve.....	65
Table 29: OSR29 Queen Louisa Park.....	66
Table 30: OSR 30-64 Local Level Open Space Reserves.....	67
Table 31: OSR65 Hefford Drive Reserve (Callington).....	68
Table 32: OSR66 Geisler Reserve (Jervois).....	69
Table 33: OSR67 Langhorne Creek Road Stone Reserve (Boggy Lake).....	70
Table 34: ORS 68-69 District Level Conservation Parks ..	71
Table 35: OSR70 Jervois Oval.....	72
Table 36: OSR71 Mypolonga Civic Park.....	73
Table 37: OSR72 Irene Hughes Park.....	74
Table 38: OSR73 Mypolonga Oval.....	75
Table 39: OSR74 Hill Road Reserve.....	76
Table 40: OSR75 Woodlane Reserve.....	77
Table 41: OSR76 Courthouse Reserve.....	78
Table 42: OSR77 Monarto Oval.....	79
Table 43: OSR78 Monarto Interface Zone.....	80
Table 44: OSR 79-94 Outlying Areas - Local Level Open Space Reserves.....	81
Table 45: OSR95 Rocky Gully Wetlands.....	82
Table 46: OSR96 Narooma Wetland.....	83
Table 47: OSR97-99 District Level Wetlands.....	84
Table 48: OSR99 Riverglades Wetlands.....	85
Table 49: OSR100 Old Swanport Road Drainage Reserve.....	86
Table 50: OSR101 Production Road Reserve.....	87
Table 51: OSR102 Clipsal Road (Howard Rd) Reserve ..	88
Table 52: OSR103-109 Outlying Areas - Local Level Drainage Reserves.....	89

Table 53: OSR110-113 Local Level Cemeteries.....	90
Table 54: OSR114 Existing Racecourse Site.....	91
Table 55: OSR115 Gifford Hill Recreation Areas.....	92

## Figures

Figure 1: Regional Open Space Strategy Key Plan.....	25
Figure 2: Murray Bridge Open Space Key Plan.....	26
Figure 3: Murray Bridge Open Space Key Plan Inset ....	27
Figure 4: Strategic Open Space Development Proposals – Murray Bridge.....	29
Figure 5: Callington Open Space Key Map.....	30
Figure 6: Jervois Open Space Key Map.....	31
Figure 7: Mypolonga Open Space Key Map.....	32
Figure 8: Wellington Open Space Key Map.....	33
Figure 9: Monarto Open Space Key Map.....	34

## Photos

Photo 1: Sturt Reserve.....	3
Photo 2: Sturt Reserve– Hume Reserve Link.....	3
Photo 3: Pine Park.....	4
Photo 4: Edwards Square.....	4
Photo 5: Diamond Park.....	4
Photo 6: War Memorial Playground.....	4
Photo 7: Showgrounds.....	4
Photo 8: Hume Reserve.....	4
Photo 9: Tamarisk Avenue Reserve.....	5
Photo 10: Le Messurier Oval.....	5
Photo 11: Johnstone Park.....	5
Photo 12: Christian Reserve.....	5
Photo 13: Homburg Park.....	5
Photo 14: Tim Overall Reserve.....	5
Photo 15: Kuchel Park.....	6
Photo 16: Avoca Dell Reserve.....	6
Photo 17: Wharf Hill Reserve.....	6
Photo 18: Wattle Street Reserve.....	6
Photo 19: Adelaide Road Plantation.....	6
Photo 20: Carey's Park.....	6
Photo 21: Watts Road Stone Reserve.....	7
Photo 22: Murray Park.....	7





Photo 23: Plover Park .....	7	Photo 65: Hefford Drive Reserve.....	15	Photo 104: Greenlands Drive Drainage Reserve.....	21
Photo 24: Wickens Reserve .....	7	Photo 66: Geisler Reserve (Jervois) .....	15	Photo 105: Riverview Estate Reserve .....	21
Photo 25: Long Island Reserve .....	7	Photo 67: Langhorne Creek Road Stone Reserve (Boggy Lake) .....	15	Photo 106: Campbell Drive Reserve .....	22
Photo 26: Thiele Reserve .....	7	Photo 68: Ferries-McDonald Conservation Park .....	15	Photo 107: Amanda Street Reserve .....	22
Photo 27: Vanderzon Reserve.....	8	Photo 69: Monarto Conservation Park .....	15	Photo 108: Hill Street Drainage Reserve .....	22
Photo 28: Swanport Reserve .....	8	Photo 70: Jervois oval.....	15	Photo 109: Jacaranda Street Stormwater Detention Basin.....	22
Photo 29: Queen Louisa Park .....	8	Photo 71: Mypolonga Civic Park.....	16	Photo 110: Bremer Road Cemetery .....	23
Photo 30: Owl Drive Reserve .....	8	Photo 72: Irene Hughes Park (Mypolonga) .....	16	Photo 111: Adelaide Road Cemetery.....	23
Photo 31: Baden Powell Park .....	8	Photo 73: Mypolonga Oval .....	16	Photo 112: Callington Cemetery .....	23
Photo 32: White Park .....	8	Photo 74: Hill Road Reserve (Mypolonga).....	16	Photo 113: Monarto Pioneer Memorial Cemetery .....	23
Photo 33: Totness Park .....	9	Photo 75: Woodlane Reserve .....	16	Photo 114: Existing Racecourse Site .....	24
Photo 34: Oak Avenue Reserve.....	9	Photo 76: Courthouse Reserve (Wellington) .....	16	Photo 115: Gifford Hill Development .....	24
Photo 35: Rocky Gully Landfill .....	9	Photo 77: Monarto Oval.....	17		
Photo 36: Lienert Reserve .....	9	Photo 78: Monarto Interface Zone.....	17		
Photo 37: The Railway Precinct.....	9	Photo 79: White Sands Reserve .....	17		
Photo 38: Dorset Street Reserve.....	9	Photo 80: Callington Hill Grassland .....	17		
Photo 39: Progress Drive (Lot 335).....	10	Photo 81: Jervois Ferry Reserve.....	17		
Photo 40: Apex Park and Ridge Road Reserve.....	10	Photo 82: Hann Road Reserve.....	17		
Photo 41: Weigall Avenue Reserve .....	10	Photo 83: River Vine Court Riverfront Reserve .....	18		
Photo 42: Rolland Reserve.....	10	Photo 84: River Glen Marina Reserve.....	18		
Photo 43: Jaensch Rd/Oxford Street.....	10	Photo 85: Morphett Flora & Fauna Reserve .....	18		
Photo 44: Jaensch Rd Vacant Land .....	10	Photo 86: Woods Point Community Reserve.....	18		
Photo 45: Parish Crescent Reserve .....	11	Photo 87: Bells Landing Reserve .....	18		
Photo 46: Knight St Reserve.....	11	Photo 88: Rivergum Drive Reserve (Mypolonga).....	18		
Photo 47: Wildens Way .....	11	Photo 89: Toora Reserve .....	19		
Photo 48: Tumbella Reserve .....	11	Photo 90: Murrawong Reserve .....	19		
Photo 49: Industry Road Reserve .....	11	Photo 91: Snakey Gully Reserve .....	19		
Photo 50: Phillip Street Reserve .....	11	Photo 92: Baker Reserve (Wellington).....	19		
Photo 51: Johnstone Avenue Reserve .....	12	Photo 93: Murrundi Reserve .....	19		
Photo 52: Schubert Street Reserve .....	12	Photo 94: Sunnyside Water Front Reserve and Cliff Reserves.....	19		
Photo 53: McQuarrie Street Reserve .....	12	Photo 95: Rocky Gully Wetlands.....	20		
Photo 54: East Side Parking Bay .....	12	Photo 96: Narooma Wetland .....	20		
Photo 55: Torrens Road Reserve .....	12	Photo 97: Casuarina Walk Reserve .....	20		
Photo 56: Emu Road .....	12	Photo 98: Swanport Wetland.....	20		
Photo 57: McNamara Park.....	13	Photo 99: Riverglades Wetlands.....	20		
Photo 58: Raymond Road Reserve .....	13	Photo 100: Old Swanport Rd (Rural Ave) Drainage Reserve .....	21		
Photo 59: Bungana Drive Reserve .....	13	Photo 101: Production Drive Reserve.....	21		
Photo 60: Myrtle Avenue Reserve .....	13	Photo 102: Clipsal Rd (Howard Rd) Reserve .....	21		
Photo 61: Corella Place Reserve .....	13	Photo 103: Homburg Drive Drainage Reserve .....	21		
Photo 62: Frank Jackman Lookout Reserve .....	13				
Photo 63: Ellendale Avenue Reserve .....	14				
Photo 64: Jubilee Park .....	14				





## 1. Introduction

### 1.1 Strategy Format

In preparing the Murray Bridge Sport, Recreation and Open Space Strategy (MBSROSS) four separate volumes have been compiled. They are:

1. *Volume I: Introduction & Project Overview*
2. *Volume II: Sport & Recreation Strategy*
3. *Volume III: Open Space Strategy*
4. *Volume IV: Literature Review, Consultation Findings & Evidence Base*

It is recommended that all four volumes are read in conjunction with each other. *Volume IV* provides background information relating to the Literature Review and compiles the key findings from the extensive consultation process and evidence base.

## 2. Open Space Issues & Principles

### 2.1 Future directions for Open Space

In developing the Open Space Strategy for the Rural City of Murray Bridge, particular attention has to be given to;

- The review of existing Public Open Spaces
- Emerging trends in the use (and design) of public spaces
- Climate change and sustainability (alignment with the draft Integrated Water Management Strategy)
- Environmental health and biodiversity (alignment with the Environmental Sustainability Management Plan)
- Social capital, health and wellbeing (with emphasis on the provision of walkable neighbourhoods ie. Improved pedestrian and bicycle connectivity through all townships)
- Demographic shifts and changing lifestyles (needs of growing migrant population and changing industry practices)
- The availability and affordability of public open space.

### 2.2 Key Principles for Action

Significant positive change in the quality of the Rural City of Murray Bridge's public realm can be achieved by taking advantageous action on five key principles;

#### 1.1.1. Strategic Directions

The Open Space Strategy will provide a strategic basis for the planning of, and decision making on, the design and management of Council's open space assets. The strategy:

- should be incorporated as a reference document in the planning scheme

- Will provide strategic consideration in Council decision making

- Will provide a practical guide for the planning of a capital works program to develop open spaces within the region.

#### 1.1.2. Community Links

Pedestrian, bicycle and shared pathway links particularly within the township of Murray Bridge must be improved to allow for better connectivity between Residential areas (including the new Gifford Hill Development area), Workplaces (including planned future commercial precincts), Open Spaces, and the Town Centre. Such links will provide cost effective and healthy transport alternatives to vehicular travel, while at the same time encouraging walking and recreational activities for residents of all ages.

The City has a number of opportunities for improving linkages including streetscape greening, installation of durable and continuous pavement surfaces and pedestrian friendly crossings to major infrastructure elements such as major roads and the South Eastern Freeway.

Instrumental in achieving these links is fruitful negotiations with State Government agencies and landowners (in those areas where Council does not presently have jurisdiction over the space) and through a strategic staging plan that targets the highest benefit for the maximum number of local residents.

#### 1.1.3. Targeted Open Space Upgrades

The equitable distribution of Public Open Space both in quality and quantity is an important aim of the open space strategy. To that end, the Open Space Strategy will identify areas where the quality of open spaces could be significantly improved.

For example, numerous reports have highlighted Sturt Reserve in Murray Bridge as a significant open space asset having the opportunity to deliver multiple benefits including tourism, recreation, and economic activation and as a key linkage in a wider network of environmental open spaces along the Murray River. In addition, the area to the south of Burdekin Avenue and Finch Road include a large proportion of open spaces, most of which are largely undeveloped. In order to provide equity of access to high quality open spaces, consideration should be given to the identification of key reserves within this area as well as Sturt Reserve for high priority upgrades.

#### 1.1.4. Sustainability

The Open Space strategy will recommend strategies and actions that can be undertaken to improve the ecological sustainability of the City's reserves and thus the health and wellbeing of its residents.

The term 'sustainability' is often over used but poorly defined. In this context, 'sustainability' is defined as the planning, design and maintenance of public spaces in ways that minimise the long term detrimental effects on the environment.

The supply of sustainable sources of water for irrigation of reserves is fundamental to the successful implementation of this strategy. Any Regional, District or Local level reserve should be provided with at least some degree of irrigation supply in order to promote the active use of open space.

The open space strategy will provide meaningful proposals for the upgrade of Council's reserves that encourage the active use of, and socialising in, public space to improve resident's health and wellbeing.

#### 1.1.5. Acquisition and Disposal Strategy

Increased residential growth in some parts of the Rural City of Murray Bridge is being driven by State Government policy (30 year plan) and by the city's affordability and proximity to an attractive natural environment. In this regard, it is important that the provision of quality open space assets across the city is ensured.

The Open Space Strategy will provide recommendations to the appropriate acquisition or disposal of open space based on equitable access relative to population growth and balanced with Council's operational ability to maintain open space assets.





#### 1.1.6. Open Space Provision within New Developments

Under section 50 of the Development Act in set circumstances (an example extract is provided below) land developers are required to provide a certain level of provision of open space or a monetary contribution.

*“(1) Where an application under this Part provides for the division of land into more than 20 allotments, and one or more allotments is less than one hectare in area—*

*(a) the council in whose area the land is situated; or*

*(b) if the land is not situated within the area of a council—the Development Assessment Commission*

*may require—*

*(c) that up to 12.5 per cent in area of the relevant area be vested in the council or the Crown (as the case requires) to be held as open space; or*

*(d) that the applicant make the contribution prescribed by the regulations in accordance with the requirements of this section; or*

*(e) that land be vested in the council or the Crown under paragraph (c) and that the applicant make a contribution determined in accordance with subsection (7), according to the determination and specification of the council or the Development Assessment Commission and, in so acting, **the council or the Development Assessment Commission must have regard to any relevant provision of the Development Plan that designates any land as open space** and, in the case of a council, must not take any action that is at variance with that Development Plan without the concurrence of the Development Assessment Commission...”*

It is highly recommended that the directions and actions provided in this Open Space Strategy are adhered to when determining the type and functionality of open space in new developments. It is important that the land provided is suitable for the identified use and that steep, land subject to inundation and contaminated land is avoided.





### 3. Open Space Inventory and Classification

#### 3.1 Open Space Inventory

An inventory of open space resources in the Rural City of Murray Bridge area was undertaken as part of this study. Information was drawn from Council records and former strategic documents, from sporting and recreational groups, and from community members. The inventory is not intended to be an exhaustive survey of every piece of open space within the Rural City of Murray Bridge area and is focused on providing a strategic overview of Council owned and managed spaces.

#### 3.2 Open Space Classification

Each open space surveyed is classified under a classification hierarchy. This is particularly important when assessing service levels for each class of open space and also in obtaining external funding, as many of the funding programs are aligned to one or more classes.

Open spaces surveyed are classified in one of the following three (3) classes:

- Regional Level
- District Level and
- Local Level

The definitions of each of these classifications are provided below and open spaces identified within the inventory have been classified using these definitions.

#### Regional Level Open Space

An open space is Regional if it attracts users from a substantial part of the Council area as well as outside of the Council area. They tend to cater for large numbers of people beyond a local area, including tourists and possess unique attributes or features that attract a wide range of people, including important recreation and sport spaces.

#### District Level Open Space

District open spaces generally provide for people within the Council area, however they do not have the level of infrastructure that a regional open space has. These spaces

may include larger or more unique facilities and provide for a range of structure activities (including organised formal sport) as well as passive activities.

#### Local Level Open Space

Local open spaces cater for a local community with activities primarily targeted at the population of an individual suburb. These spaces are typically smaller and are within easy walking distance from the community they serve. Facilities might include open grass areas, playgrounds and seating.

### 4. Existing Open Space Provision

#### 4.1 Overview

This section of the MBSROSS provides a strategic audit of key existing open space resources (OSRs) across the region, including a brief description of the resource and identification of an open space hierarchy. Further analysis of each of the spaces is provided within the Open Space Strategy and Action Plan tables (refer Section 5 Strategy & Action Plan).

Three supporting figures are included at the end of this section:

- *Figure 1 Regional Open Space Strategy Key Plan* locates the key open space resources within the context of the wider region, covering Murray Bridge and its relationship to the outlying townships of Callington, Jervois, Mypolonga, Wellington and Monarto and the surrounding areas.
- *Figures 2 & 3 Murray Bridge Open Space Key Plan* provides a detailed analysis of key open space resources and strategic pedestrian/cycle links throughout Murray Bridge.

The Rural City of Murray Bridge has a high provision of Community Land in relation to the existing and projected population size. 580.96 hectares represents 32.86 ha per 1,000 people for the 2006 population of 17,678 and 17.08 ha per 1,000 people for a potential future population of 34,000 people. Given the high provision of total Community Land, there could be some potential for land rationalisation to enable other open space to be upgraded. However, this land would need to be carefully selected to ensure that a good spread of usable open space, detention areas and natural reserves (ideally Council owned) are maintained to meet future Council and population requirements (Suter Planners, 2010).

#### 4.2 Murray Bridge

##### OSR1: Sturt Reserve

##### *Regional Open Space*

Premier open space in Murray Bridge, providing a balance of open space with formal/informal sport and recreation provision.



Photo 1: Sturt Reserve

##### OSR2: Sturt Reserve – Hume Reserve Link

##### *Regional Open Space*

Riverside link connecting Sturt Reserve and Hume Reserve, following alignment of old railway line.



Photo 2: Sturt Reserve– Hume Reserve Link





### OSR3: Pine Park

*Regional Open Space*

Centrally located park, named after the 75 majestic pine trees dominating this parkland, featuring picnic table and shelter.



Photo 3: Pine Park

### OSR4: Edwards Square

*Regional Open Space*

A prominent and well landscaped reserve in the centre of town, featuring a sound shell used for concerts and community events.



Photo 4: Edwards Square

### OSR5: Diamond Park

*Regional Open Space*

Well landscaped reserve in the centre of Murray Bridge, with war memorials, bench seating and public amenities.



Photo 5: Diamond Park

### OSR6: War Memorial Playground

*Regional Open Space*

A largely neglected reserve with some established perimeter trees and limited play equipment.



Photo 6: War Memorial Playground

### OSR7: Showgrounds

*Regional Open Space*

Regional level sport, recreation and events space located on eastern edge of the city.



Photo 7: Showgrounds

### OSR8: Hume Reserve

*District Open Space*

Riverfront reserve featuring boat ramp and houseboat mooring opportunities.



Photo 8: Hume Reserve





### OSR9: Tamarisk Avenue Reserve

#### *District Open Space*

Currently an undeveloped reserve located within a residential area, dominated by native vegetation, with small pockets of open spaces.



Photo 9: Tamarisk Avenue Reserve

### OSR10: Le Messurier Oval

#### *District Open Space*

Multi-use sports facility that also functions as passive open space, with informal car parking areas.



Photo 10: Le Messurier Oval

### OSR11: Johnstone Park

#### *District Open Space*

Multi-use facility that includes formal sports facilities, off-leash dog area, various clubrooms/changerooms and public amenities.



Photo 11: Johnstone Park

### OSR12: Christian Reserve

#### *District Open Space*

Reserve with formal sports facilities and large areas of open space, including low key play facilities and park amenities. Parts of the site are used for stormwater detention.



Photo 12: Christian Reserve

### OSR13: Homburg Park

#### *District Open Space*

Located in a residential area, featuring a small velodrome, clubroom, playground and public amenities.



Photo 13: Homburg Park

### OSR14: Tim Overall Reserve

#### *District Open Space*

This reserve has two fenced off areas for use as a dog park as well as a third area with a small BMX track and seating.



Photo 14: Tim Overall Reserve





### OSR15: Kuchel Park

#### *District Open Space*

This is a small to medium sized park. This park is composed of a central grassed area surrounded by a few established trees. The park is in good condition and is fenced due to its use as a dog park.



Photo 15: Kuchel Park

### OSR16: Avoca Dell Reserve

#### *District Open Space*

Picturesque riverside reserve with spectacular views of the river. Features include boat ramp, houseboat mooring sites, car parking, barbecues, shelters and public amenities.



Photo 16: Avoca Dell Reserve

### OSR17: Wharf Hill Reserve

#### *District Open Space*

Located near the river this reserve features established trees, car parking and grassed areas.



Photo 17: Wharf Hill Reserve

### OSR18: Wattle Street Reserve

#### *Local Open Space*

A small island of open space located in a residential area. Features some established trees and an open grassed space.



Photo 18: Wattle Street Reserve

### OSR19: Adelaide Road Plantation

#### *Local Open Space*

This area (which runs adjacent to Adelaide Rd) includes natural scrub and grassed areas and currently has informal bike tracks throughout. There is the potential to develop a multiuse trail through this land.



Photo 19: Adelaide Road Plantation

### OSR20: Carey's Park

#### *Local Open Space*

This area (which runs adjacent to Mannum Rd) includes natural scrub/trees and grassed areas. There is the potential to develop a multiuse trail through this land.



Photo 20: Carey's Park





### OSR21: Watts Road Stone Reserve

#### *Local Open Space*

This is a medium sized reserve which used to be a rubble pit. This location has the potential to be developed as a lookout, but its current condition is poor and the land is covered by shrubs and weeds.



Photo 21: Watts Road Stone Reserve

### OSR22: Murray Park

#### *Local Open Space*

Nature reserve located at the edge of the residential zone serving as a valuable biodiversity site and a buffer to light industrial areas.



Photo 22: Murray Park

### OSR23: Plover Park

#### *Local Open Space*

Relatively undeveloped reserve including small playground and vegetated areas with recent plantings.



Photo 23: Plover Park

### OSR24: Wickens Reserve

#### *Local Open Space*

Small park with some established trees.



Photo 24: Wickens Reserve

### OSR25: Long Island Reserve

#### *Local Open Space*

Riverfront reserve that is a destination for water sports enthusiasts, featuring boat ramp, barbeques, playground, car parking and public amenities.



Photo 25: Long Island Reserve

### OSR26: Thiele Reserve

#### *Local Open Space*

Waterfront reserve on the east side of Murray Bridge, featuring barbecues, playground, shelter, boat ramp, car parking and public amenities.



Photo 26: Thiele Reserve





### OSR27: Vanderzon Reserve

#### *Local Open Space*

This is an elongated reserve that links Torrens Road through to the Riverglades Wetlands. It features a dirt track for walking.

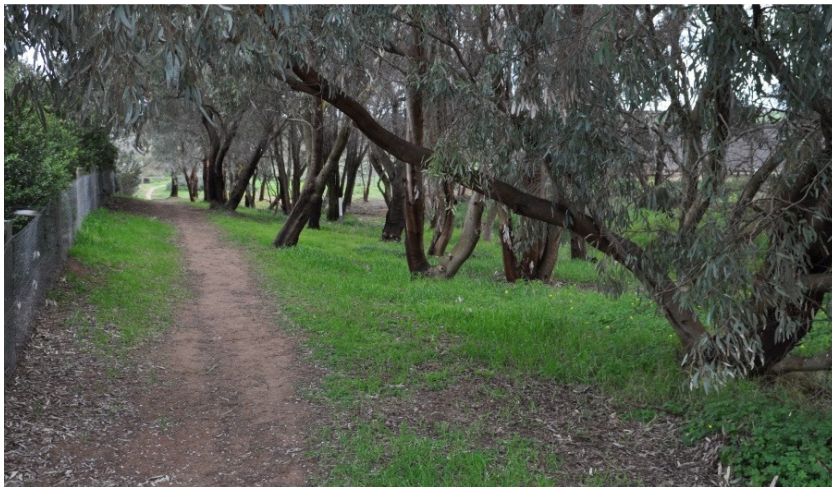


Photo 27: Vanderzon Reserve

### OSR28: Swanport Reserve

#### *Local Open Space*

Lawned riverfront reserve with dedicated areas for swimming and fishing. Features include barbecues, shelters and public amenities.



Photo 28: Swanport Reserve

### OSR29: Queen Louisa Park

#### *Local Open Space*

This is a strip of council owned land between private housing and the river frontage. It features a boat ramp and has the potential for linkage through to Swanport Wetlands.



Photo 29: Queen Louisa Park

### OSR30: Owl Drive Reserve

#### *Local Open Space*

This is a medium sized park. This park is composed of a central grassed area surrounded by established trees. The park is in reasonable condition though there is inconsistent grass coverage. Good opportunity for development.



Photo 30: Owl Drive Reserve

### OSR31: Baden Powell Park

#### *Local Open Space*

Small park taken up mostly by parking and established trees.



Photo 31: Baden Powell Park

### OSR32: White Park

#### *Local Open Space*

Off leash Dog Park with established trees and grassed area.



Photo 32: White Park





### OSR33: Totness Park

#### *Local Open Space*

This is a small corner park that is well maintained with some established trees, grassed areas and one park table with seats.



Photo 33: Totness Park

### OSR34: Oak Avenue Reserve

#### *Local Open Space*

This is a small- medium sized park with established trees, open grassed areas, a slide and a basketball ring. The equipment in this reserve is in poor condition.



Photo 34: Oak Avenue Reserve

### OSR35: Rocky Gully Landfill

#### *Local Open Space*

This area used to be used as a dumping ground but is now an open block of land. This site currently has limited recreation use and is in relatively poor condition. It is a large site however taking up roughly 7ha.



Photo 35: Rocky Gully Landfill

### OSR36: Lienert Reserve

#### *Local Open Space*

This is a small triangular shaped reserve that is well maintained with some established trees and a grassed area.



Photo 36: Lienert Reserve

### OSR37: The Railway Precinct

#### *Local Open Space*

This parcel of land sits in-between Sturt and Hume Reserves and could potentially link the two. Currently this land is not owned by council and has limited recreational value. The area is known to be used for walking.



Photo 37: The Railway Precinct

### OSR38: Dorset Street Reserve

#### *Local Open Space*

Native bushland with limited facilities and accessibility.



Photo 38: Dorset Street Reserve





#### **OSR39: Progress Drive (Lot 335)**

##### *Local Open Space*

Elongated space of established trees located in a residential area.



**Photo 39: Progress Drive (Lot 335)**

#### **OSR40 Apex Park and Ridge Road Reserve**

##### *Local Open Space*

Medium sized reserve located within a residential area, featuring established trees and an open grassed area.



**Photo 40: Apex Park and Ridge Road Reserve**

#### **OSR41: Weigall Avenue Reserve**

##### *Local Open Space*

Small/Medium sized reserve located within a residential area, featuring established trees and an open grassed area.



**Photo 41: Weigall Avenue Reserve**

#### **OSR42: Rolland Reserve**

##### *Local Open Space*

This is a small to medium sized reserve. This reserve has a cricket pitch in the centre and a swing set to the side. The reserve is well maintained and in good condition.



**Photo 42: Rolland Reserve**

#### **OSR43: Jaensch Rd/Oxford Street**

##### *Local Open Space*

This is a medium block of un-used sloping land with some established trees and shrubs. This site currently has no recreational usage and is of relatively limited recreational value due to its close proximity to the regional level Sturt Reserve.

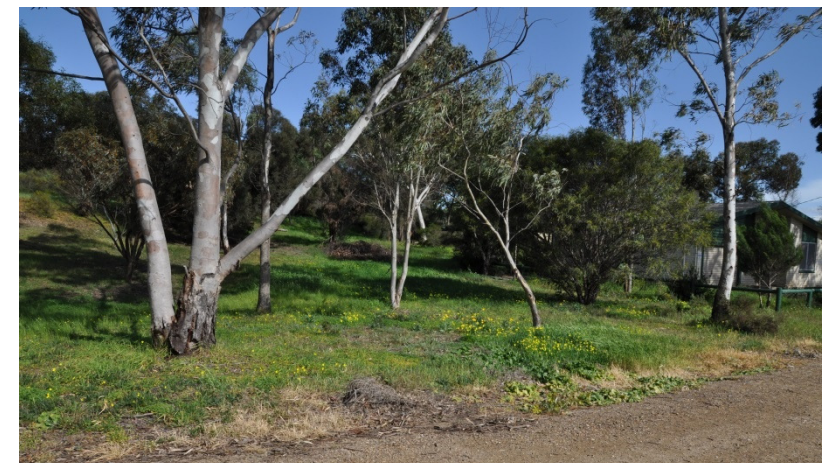


**Photo 43: Jaensch Rd/Oxford Street**

#### **OSR44: Jaensch Rd Vacant Land**

##### *Local Open Space*

This is a block of un-used sloping land with some established trees. This site currently has no recreational usage and is of relatively limited recreational value due to its close proximity to the regional level Sturt Reserve.



**Photo 44: Jaensch Rd Vacant Land**





#### OSR45: Parish Crescent Reserve

##### *Local Open Space*

This is a small to medium sized reserve. This reserve has a cricket pitch in the centre and an open grass space with some established trees. The reserve is in reasonable condition.



Photo 45: Parish Crescent Reserve

#### OSR46: Knight St Reserve

##### *Local Open Space*

This is a small to medium sized reserve. This reserve has a cricket pitch in the centre and an open grass space with some established trees. The reserve is well maintained and in good condition.



Photo 46: Knight St Reserve

#### OSR47: Wildens Way

##### *Local Open Space*

This is a medium sized reserve that links Long Island Reserve with and Tumbella Reserve. This reserve is grassed open space that is not actively maintained.



Photo 47: Wildens Way

#### OSR48: Tumbella Reserve

##### *Local Open Space*

This is an established medium sized reserve. This reserve is composed of grassed areas, established trees (along river front) and is in reasonable condition.



Photo 48: Tumbella Reserve

#### OSR49: Industry Road Reserve

##### *Local Open Space*

Medium sized reserve located within a residential area. The reserve is mostly baron with some trees around the perimeter.



Photo 49: Industry Road Reserve

#### OSR50: Phillip Street Reserve

##### *Local Open Space*

This reserve adjoins the local scout hall. It features some established trees and areas of open grass. The reserve is in average condition.



Photo 50: Phillip Street Reserve





### OSR51: Johnstone Avenue Reserve

#### *Local Open Space*

This reserve has a grassed centre with established trees located towards the perimeter. It also features a shelter, table with seats and a light.



Photo 51: Johnstone Avenue Reserve

### OSR52: Schubert Street Reserve

#### *Local Open Space*

This triangular reserve has a grassed centre with established trees located towards the perimeter. It also features a basketball ring, table with seats and a slide.



Photo 52: Schubert Street Reserve

### OSR53: McQuarrie Street Reserve

#### *Local Open Space*

This is a large parcel of land that is currently unused. Currently the land remains as open space and is not maintained. There are no on site facilities.



Photo 53: McQuarrie Street Reserve

### OSR54: East Side Parking Bay

#### *Local Open Space*

This area features a strip of grassed area, gazebo (with table and chairs) and a view to Murray Bridge.



Photo 54: East Side Parking Bay

### OSR55: Torrens Road Reserve

#### *Local Open Space*

This is a medium sized reserve mostly taken up by established trees. The reserve features an irrigated grass patch and a small playground.



Photo 55: Torrens Road Reserve

### OSR56: Emu Road

#### *Local Open Space*

Small to medium sloping reserve located within a residential area next to the Riverglades Wetlands.



Photo 56: Emu Road





### OSR57: McNamara Park

#### *Local Open Space*

This is a small park with some established trees, grassed areas and a swing set. The park is in reasonable condition.



Photo 57: McNamara Park

### OSR58: Raymond Road Reserve

#### *Local Open Space*

Large reserve located within a residential area on the east side of Murray Bridge.



Photo 58: Raymond Road Reserve

### OSR59: Bungana Drive Reserve

#### *Local Open Space*

This is mostly an overgrown grassed area with some established trees. The reserve is roughly 3-4 ha. and currently supports limited recreational usage.



Photo 59: Bungana Drive Reserve

### OSR60: Myrtle Avenue Reserve

#### *Local Open Space*

Small local park with in a residential area. The reserve has some established trees and maintained grass.



Photo 60: Myrtle Avenue Reserve

### OSR61: Corella Place Reserve

#### *Local Open Space*

This is a small island reserve located in the centre of a residential cul-de-sac.



Photo 61: Corella Place Reserve

### OSR62: Frank Jackman Lookout Reserve

#### *Local Open Space*

Local park with dilapidated lookout facilities including extensive concrete walls and parking areas.



Photo 62: Frank Jackman Lookout Reserve





### **OSR63: Ellendale Avenue Reserve**

#### *Local Open Space*

This is a small to medium sized reserve. This reserve is composed of grassed areas broken up by established trees. The reserve appears to be in reasonable condition.



**Photo 63: Ellendale Avenue Reserve**

### **OSR64: Jubilee Park**

#### *Local Open Space*

This is a small to medium sized park. This park is composed of a central grassed area surrounded by established trees. The park is in good condition. This park is located on the opposite side of the road to Kuchel Park.



**Photo 64: Jubilee Park**





### 4.3 Outlying Areas

#### OSR65: Hefford Drive Reserve (Callington)

*District Open Space*

Undeveloped linear reserve along the banks of the Bremer River.



Photo 65: Hefford Drive Reserve

#### OSR66: Geisler Reserve (Jervois)

*District Open Space*

Area of unimproved land featuring well established trees.



Photo 66: Geisler Reserve (Jervois)

#### OSR67: Langhorne Creek Road Stone Reserve (Boggy Lake)

*District Open Space*

Boggy Lake Reserve is a recreational plot used for sailing and windsurfing. The Goolwa to Wellington Local Action Group are currently revegetating this site. Potential to add shelter & toilets.



Photo 67: Langhorne Creek Road Stone Reserve (Boggy Lake)

#### OSR68: Ferries-McDonald Conservation Park

*District Open Space*

This park takes up roughly 860ha and is full of native vegetation. It features walking tracks, bird watching (including the endangered Mallee Fowl) and car parking facilities.



Photo 68: Ferries-McDonald Conservation Park

#### OSR69: Monarto Conservation Park

*District Open Space*

This park contains one of the few pieces of remnant Mallee vegetation close to Adelaide. There is only foot traffic allowed so no camping or caravanning is permitted. There are currently no facilities present, apart from car parking and walking trails.



Photo 69: Monarto Conservation Park

#### OSR70: Jervois Oval

*Local Open Space*

Community owned major open space reserve, catering for sporting activities with informal parking areas.



Photo 70: Jervois oval





### **OSR71: Mypolonga Civic Park**

*Local Open Space*

Undeveloped reserve located at the entrance to Mypolonga.



**Photo 71: Mypolonga Civic Park**

### **OSR72: Irene Hughes Park (Mypolonga)**

*Local Open Space*

Fenced reserve featuring play equipment, basketball ring and concrete playing area.



**Photo 72: Irene Hughes Park (Mypolonga)**

### **OSR73: Mypolonga Oval**

*Local Open Space*

Community owned major open space reserve, serving as a community focal point and catering for sporting activities.



**Photo 73: Mypolonga Oval**

### **OSR74: Hill Road Reserve (Mypolonga)**

*Local Open Space*

Recently improved revegetation site immediately behind levee bank.



**Photo 74: Hill Road Reserve (Mypolonga)**

### **OSR75: Woodlane Reserve**

*Local Open Space*

Riverfront reserve with picnic facilities, boat ramp, grassed areas and car parking.



**Photo 75: Woodlane Reserve**

### **OSR76: Courthouse Reserve (Wellington)**

*Local Open Space*

Small pocket park with good quality tree coverage.



**Photo 76: Courthouse Reserve (Wellington)**





### OSR77: Monarto Oval

#### Local Open Space

This facility includes oval, hall, changerooms, barbecues and playground.



Photo 77: Monarto Oval

### OSR78: Monarto Interface Zone

#### Local Open Space

This is a proposed landscape buffer to separate the new light industry precinct from adjacent incompatible land uses.



Photo 78: Monarto Interface Zone

### OSR79: White Sands Reserve

#### Local Open Space

This reserve is located between the White Sands Caravan Park and Jervois Road. It is a relatively large parcel of unused open space that is dominated by native scrub.

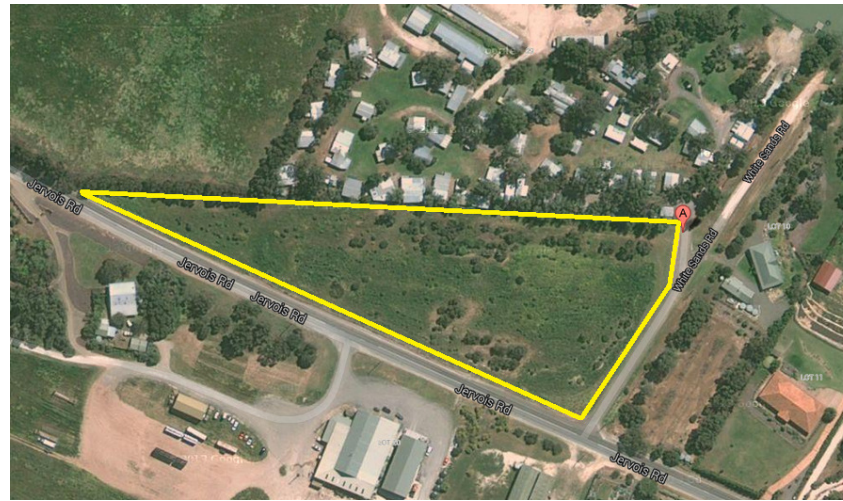


Photo 79: White Sands Reserve

### OSR80: Callington Hill Grassland

#### Local Open Space

Large parcel of open sapce. Minimal established vegetation present. Location has undulating surfaces.



Photo 80: Callington Hill Grassland

### OSR81: Jervois Ferry Reserve

#### Local Open Space

Riverfront reserve with some grassed areas. This location is used as the Jervois Ferry crossing and receives minimal recreation use



Photo 81: Jervois Ferry Reserve

### OSR82: Hann Road Reserve

#### Local Open Space

Hann Road reserve is an elongated strip of sloping land between privately owned dwellings and the river frontage. This land is currently maintained by home owners but is council owned.



Photo 82: Hann Road Reserve





### OSR83: River Vine Court Riverfront Reserve

#### *Local Open Space*

Hann Road reserve is an elongated strip of sloping land between privately owned dwellings and the river frontage. This land is currently maintained by home owners but is council owned.



Photo 83: River Vine Court Riverfront Reserve

### OSR84: River Glen Marina Reserve

#### *Local Open Space*

This reserve is split into two sections; the upper section is maintained grass that slopes towards the river whilst the flatter secondary section is not maintained and features some established trees, car parking and a toilet block.



Photo 84: River Glen Marina Reserve

### OSR85: Morphett Flora & Fauna Reserve

#### *Local Open Space*

Located on Jervois Rd this reserve has recently become heritage listed. It is a 17+ha site and is covered in native flora which in turn supports numerous species of native fauna.

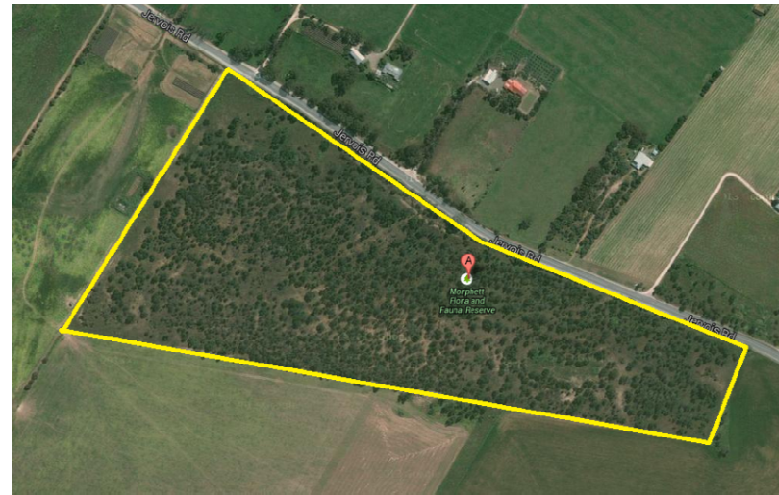


Photo 85: Morphett Flora & Fauna Reserve

### OSR86: Woods Point Community Reserve

#### *Local Open Space*

This reserve is the site of an old school. It features a toilet block and basketball courts and has nearby river access via The Point Rd. The overall condition of this reserve is poor.



Photo 86: Woods Point Community Reserve

### OSR87: Bells Landing Reserve

#### *Local Open Space*

This reserve features a boat ramp, basic fencing and some grassed area for recreation. This reserve appears to be in good condition.



Photo 87: Bells Landing Reserve

### OSR88: Rivergum Drive Reserve (Mypolonga)

#### *Local Open Space*

This is 4 parcels of riverfront reserve. The area is un-kept but there are well established trees present on site.



Photo 88: Rivergum Drive Reserve (Mypolonga)





### OSR89: Toora Reserve

#### Local Open Space

This is a triangular riverfront reserve. It features areas of open grass and some established trees.



Photo 89: Toora Reserve

### OSR90: Murrawong Reserve

#### Local Open Space

This is a small river front reserve. There are established trees along the riverbank with some grassed areas present.



Photo 90: Murrawong Reserve

### OSR91: Snakey Gully Reserve

#### Local Open Space

Snakey Gully Reserve is an elongated reserve of un-used river frontage. This land has very limited vegetation cover and has very few if any established tree.



Photo 91: Snakey Gully Reserve

### OSR92: Baker Reserve (Wellington)

#### Local Open Space

Attractive riverfront reserve with picnic facilities, barbecue shelter, playground, boat ramp, car parking and public amenities.



Photo 92: Baker Reserve (Wellington)

### OSR93: Murrundi Reserve

#### Local Open Space

Murrundi Reserve is a conservation park/revegetation site near Wellington. It features a shelter, lookout, walking trails and interpretive signage.



Photo 93: Murrundi Reserve

### OSR94: Sunnyside Water Front Reserve and Cliff Reserves

#### Local Open Space

This reserve is composed of three separate land parcels located either on or in a close vicinity to the riverfront. These reserves open grassed areas with limited established vegetation.



Photo 94: Sunnyside Water Front Reserve and Cliff Reserves





#### 4.4 Wetlands

##### OSR95: Rocky Gully Wetlands

*Regional Open Space*

Wetlands habitat with path links, bird hides, seating and interpretation with extensive marginal and terrestrial plantings.



Photo 95: Rocky Gully Wetlands

##### OSR96: Narooma Wetland

*District Open Space*

This wetland serves as a connection between Sturt Reserve and Long Island Reserve. It currently has walking trails present. This site presents a good opportunity for further development.



Photo 96: Narooma Wetland

##### OSR97: Casuarina Walk Reserve

*District Open Space*

This wetland is located behind the new Pathways housing development and is well equipped with paths, benches, bridges a playground and an area of grassed open space.



Photo 97: Casuarina Walk Reserve

##### OSR98: Swanport Wetland

*District Open Space*

This is a large wetland with numerous walking paths and bird watching stations. It has been gradually extended and developed over the past 30 years and is in good condition.



Photo 98: Swanport Wetland

##### OSR99: Riverglades Wetlands

*District Open Space*

This is a large wetland with numerous walking paths and bird watching stations. This wetland is owned and maintained by the local community. This wetland is in excellent condition and is a scenic location.



Photo 99: Riverglades Wetlands





#### 4.5 Drainage/Water Retention

##### OSR100: Old Swanport Rd (Rural Ave) Drainage Reserve

###### *District Open Space*

This area has been well landscaped to include native vegetation and walking paths. It is a well-established reserve and is in excellent condition.



Photo 100: Old Swanport Rd (Rural Ave) Drainage Reserve

##### OSR101: Production Road Reserve

###### *Local Open Space*

This area is used as a water retention basin with no current recreational usage. It could be upgraded to include boardwalks, seating and landscaping to increase its recreational value.



Photo 101: Production Drive Reserve

##### OSR102: Clipsal Rd (Howard Rd) Reserve

###### *Local Open Space*

This area is used as a water retention basin with no current recreational usage. The site could be investigated as a potential water harvesting location.



Photo 102: Clipsal Rd (Howard Rd) Reserve

##### OSR103: Homburg Drive Drainage Reserve

###### *Local Open Space*

This area is used as a drainage reserve for a residential area. There are several established trees located within the reserve but the majority of the reserve is un-kept.



Photo 103: Homburg Drive Drainage Reserve

##### OSR104: Greenlands Drive Drainage Reserve

###### *Local Open Space*

This reserve currently has limited use in terms of recreation as much of the reserve consists of bare earth with limited native plantings and the remaining area is used for water retention.



Photo 104: Greenlands Drive Drainage Reserve

##### OSR105: Riverview Estate Reserve

###### *Local Open Space*

This is a small reserve used for water retention. The site has some established trees and has river access to the rear with residential housing to the front. This site is hidden and unknown to most.



Photo 105: Riverview Estate Reserve





### OSR106: Campbell Drive Reserve

#### *Local Open Space*

This reserve is used as a stormwater basin. This location features numerous established trees.



**Photo 106: Campbell Drive Reserve**

### OSR107: Amanda Street Reserve

#### *Local Open Space*

This reserve is used for stormwater retention and runoff. This location features numerous established trees and a pumping station.



**Photo 107: Amanda Street Reserve**

### OSR108: Hill Street Drainage Reserve

#### *Local Open Space*

This reserve is used as a drainage reserve for the surrounding residential area in times of heavy rain. The reserve is composed of two parcels of land one of which has established trees.



**Photo 108: Hill Street Drainage Reserve**

### OSR109: Jacaranda Street Stormwater Detention Basin

#### *Local Open Space*

This reserve is used for stormwater detention. It is a small reserve with limited recreational value.



**Photo 109: Jacaranda Street Stormwater Detention Basin**





## 4.6 Cemeteries

### OSR110: Bremer Road Cemetery

#### *Local Open Space*

This area is used as a cemetery but there is a reasonable portion of land situated behind the cemetery and also usable open space in front of the cemetery. There is also a toilet block present.



**Photo 110: Bremer Road Cemetery**

### OSR111: Adelaide Road Cemetery

#### *Local Open Space*

This area is used as a cemetery but there is usable open space in front of the cemetery. There is also a toilet block present.



**Photo 111: Adelaide Road Cemetery**

### OSR112: Callington Cemetery

#### *Local Open Space*

The area central to this parcel of land is used as a cemetery. Surrounding this is a square of council owned open space. This land is largely un-vegetated however some established trees are present.



**Photo 112: Callington Cemetery**

### OSR113: Monarto Pioneer Memorial Cemetery

#### *Local Open Space*

This area is used as a cemetery but there is usable open space in front of the cemetery. The remainder of this land is taken up by Pioneer Oval and some areas of established vegetation.



**Photo 113: Monarto Pioneer Memorial Cemetery**





#### 4.7 Future provision within the region

##### OSR114: Existing Racecourse Site

*District Open Space*

Existing racecourse site will be redeveloped with current plans for residential development, neighbourhood centre and stormwater detention.



**Photo 114: Existing Racecourse Site**

##### OSR115: Gifford Hill Development

*Various Open Spaces*

The proposed Gifford Hill development will include numerous open spaces including new racecourse, sports grounds, pocket parks, landscape buffers and unstructured recreation areas.



**Photo 115: Gifford Hill Development**



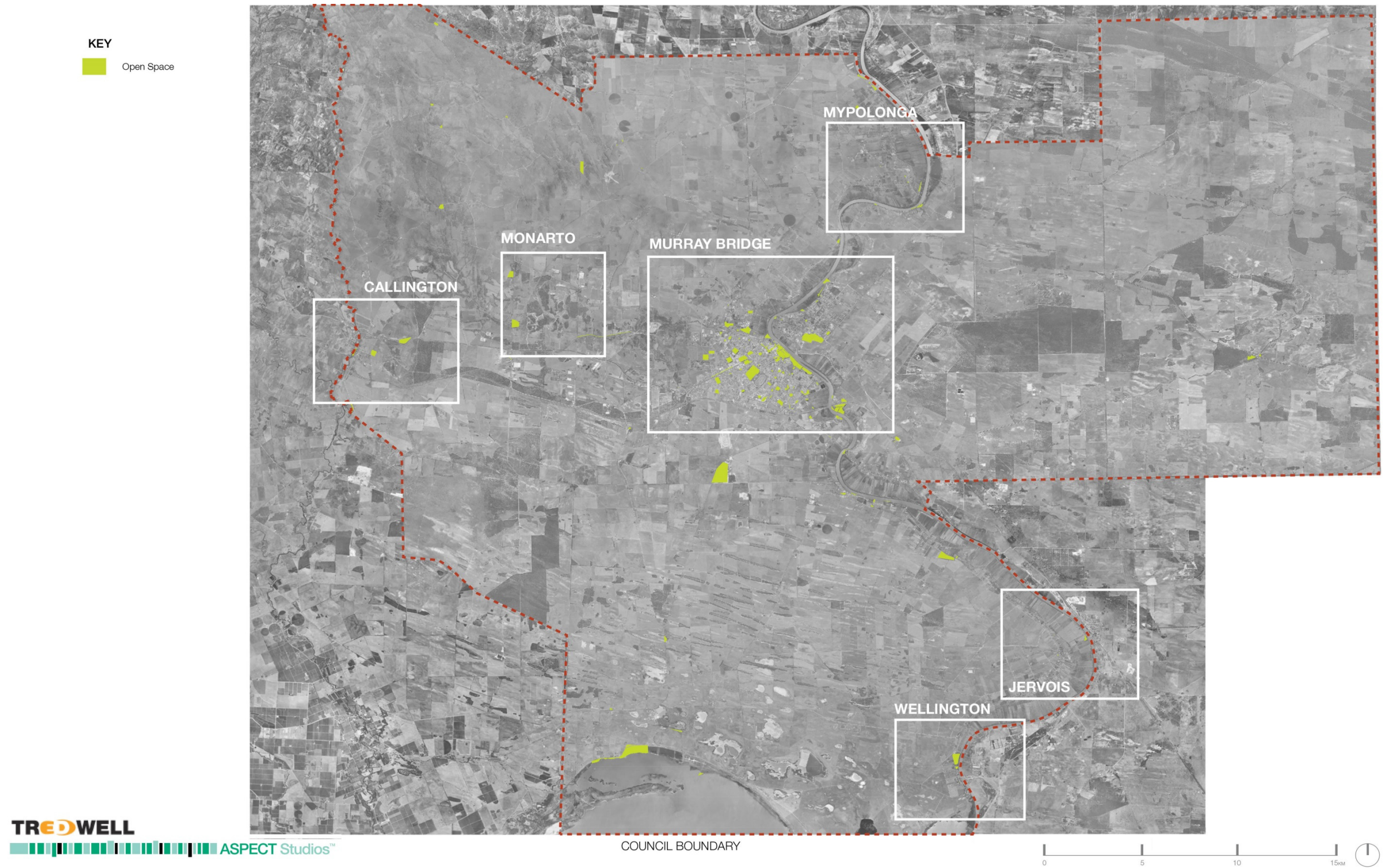


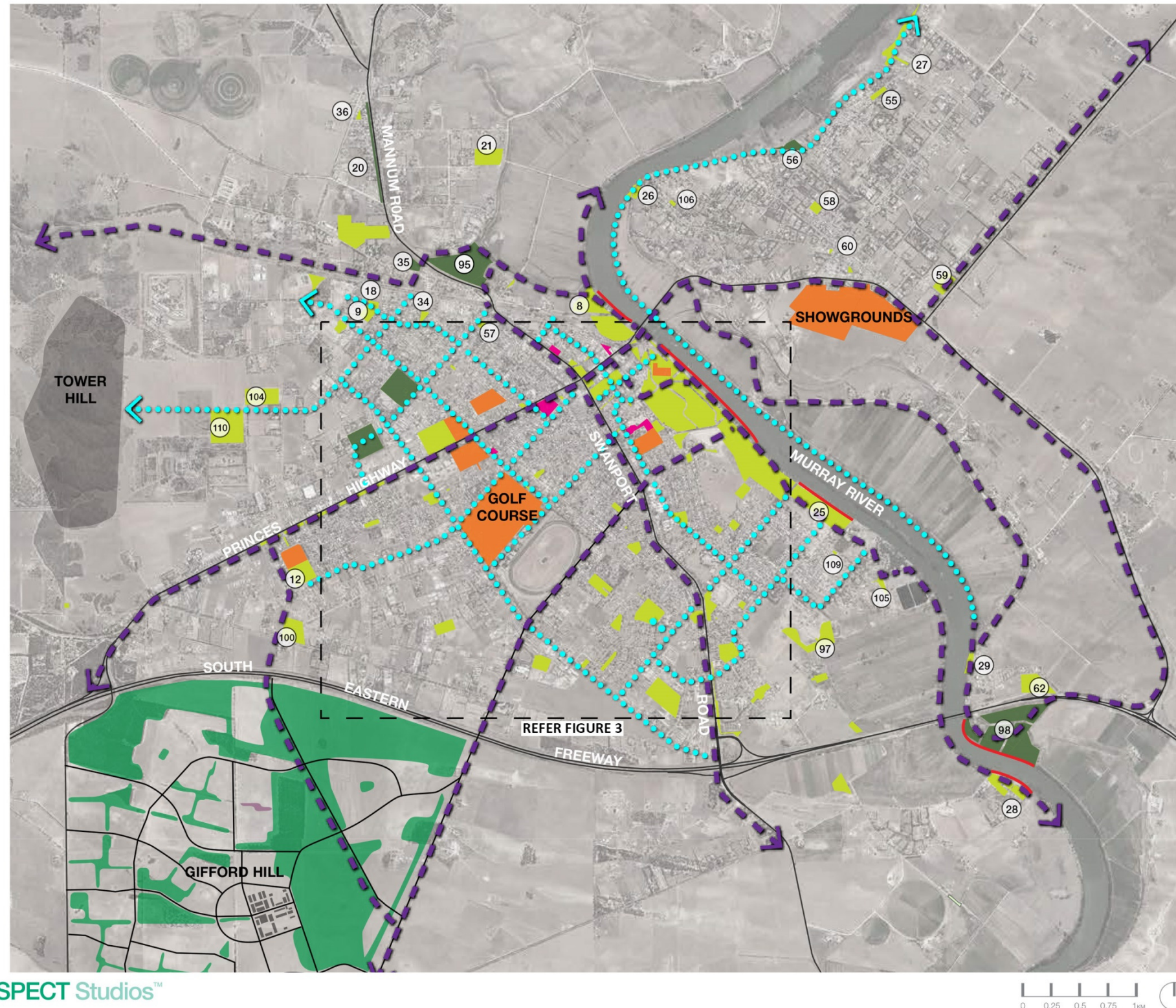
Figure 1: Regional Open Space Strategy Key Plan





#### KEY

- Major Pedestrian/Cycle Link
- Minor Pedestrian/Cycle Link
- Passive Open Space/Unstructured Recreation
- Sport Reserve
- Community Facility Reserve
- Nature Reserve
- Proposed Open Space (Gifford Hill)
- House Boat Mooring
- Open Space Resource Number



**TREDWELL**

**ASPECT Studios™**

Figure 2: Murray Bridge Open Space Key Plan.





- KEY**
- Major Pedestrian/Cycle Link
  - Minor Pedestrian/Cycle Link
  - Passive Open Space/Unstructured Recreation
  - Sport Reserve
  - Community Facility Reserve
  - Nature Reserve
  - Proposed Open Space (Gifford Hill)
  - House Boat Mooring
  - Open Space Resource Number



**TREDWELL**

**ASPECT Studios™**

**Figure 3: Murray Bridge Open Space Key Plan Inset**





## 5. Open Space Vision

During the public consultation workshops participants were asked to express their thoughts on the future provision of open space in the area. Based on these submissions and key issues and opportunities identified during this process, the following vision was developed that is considered to best reflect the broader aspirations of the Murray Bridge community, reflecting the views of individuals, sports clubs, organisations, local government and community representatives:

***“The River Murray corridor forms the spine of a fully integrated open space network, linking key township precincts and activity nodes with our outlying communities. The open space and watercourse network will create a distinctive landscape, performing important amenity, drainage, flood management, riparian habitat and water quality functions”***

## 6. Strategy and Action Plan

This section presents the strategies and actions employed to deliver the vision for Open Space across the region.

Figures 4-9 included on the following pages have been produced to support and visualise the various strategies and actions:

- Figure 4 Strategic Open Space Development Proposals – Murray Bridge
- Figure 5 Callington Open Space Key Map
- Figure 6 Jervois Open Space Key Map
- Figure 7 Mypolonga Open Space Key Map
- Figure 8 Wellington Open Space Key Map
- Figure 9 Monarto Open Space Key Map

Following on from these figures, the strategies and actions are detailed within Tables 3-55. Table 3 details Council-wide strategies that are generally applicable across the region, providing information on topics such as strategic linkages & trails, water management, irrigation and planting palettes (refer Strategies S1-S9). Tables 4-55 provide detailed actions and priorities relevant to specific open space resources (OSRs 1-115), and are cross referenced with Figures 4-9.

Each strategy/action is prioritised, alongside an analysis of the existing open space resource. Listed actions have an identified time frame, partners and an estimate of resource needs.

In assessing the priority for each of the strategies, the following factors were taken into consideration:

- Alignment with the Vision and Outcomes
- Identified need
- Safety
- Feasibility
- Level of planning undertaken
- Community support.

The priority levels adopted in the report are as follows:

**Table 1: Strategy Priority Levels**

Priority Levels	
High	Essential in achieving the Vision
Medium	Important in achieving the Vision
Low	Contributes to achieving the Vision

Partners have been identified who may be able to assist Council with the delivery of the action. It is acknowledged that without partner support many of the actions identified will not likely be achievable.

An estimate and/or source of the resources required to implement each action have been identified to assist Council with its budget processes. It is noted that where cost estimates are provided, these are broad indicative estimates and should be reviewed prior to implementation or as part of annual business and budget planning.

Indicative costings are provided for each of the actions identified to offer a broad guide to likely cost implications for each proposal. Costings are identified in broad value ranges, as identified in the following table and should be used as an indicative guide only:

**Table 2: Indicative Cost Bracket**

Indicative Cost Bracket	
Low	< \$5,000
Medium	\$5,000 – \$50,000
High	\$50,000 – \$500,000
Major Project	>\$500,000





# KEY

- Strategic Open Space Development Site
- Major Pedestrian/Cycle Link
- Minor Pedestrian/Cycle Link
- Local/Undeveloped Reserve
- Sport Reserve
- Community Facility Reserve
- Nature Reserve
- Undeveloped
- Proposed Open Space (Gifford Hill)
- Open Space Resource Number

## TOWER HILL

- Develop as mountain bike/hiking trail destination

## CHRISTIAN RESERVE

- District level park improvements
- Enhance path links

## WATTLE STREET RESERVE TAMARISK AVENUE RESERVE

- District level park upgrade
- Improve native vegetation quality
- Develop a picnic area and junior playground

## HUME RESERVE

- Develop as district level park
- Improve boat ramp and associated amenities
- Enhance trail connections

## STURT RESERVE

- Develop as major regional tourist destination and recreation park

## SHOWGROUNDS

- Develop as regional level sports, recreation and events facility

## WICKENS RESERVE

- Develop as local level park
- Upgrade existing facilities

## HOMBURG PARK

- Develop as district level park
- Enhance bike facilities

## PLOVER PARK

- Develop as local level park
- Establish irrigated grass for informal recreation

## OLD RACECOURSE SITE

- Develop as regional level sports and recreation reserve
- WSUD demonstration site

## GIFFORD HILL RECREATION SPACES

- Ensure integration with broader council park development strategy
- Develop a district/regional level sporting reserve to cater for additional population growth

TREDWELL

ASPECT Studios™

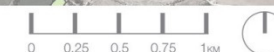


Figure 4: Strategic Open Space Development Proposals – Murray Bridge





# KEY

- Passive Open Space
- Sport Reserve
- Sports Reserve in Mt Barker Council
- Nature Reserve
- Potential Linear Trail Link along Bremer River
- Open Space Resource Number



**TREDWELL**

**ASPECT Studios™**

Figure 5: Callington Open Space Key Map





- KEY**
- Open Space with unstructured recreation facilities
  - Non Council Owned Reserve
  - Potential cycle/pedestrian link
  - Open Space Resource Number



**TREDWELL**

ASPECT Studios™



Figure 6: Jervois Open Space Key Map





- KEY**
- Open Space
  - Sport Reserve
  - Non Council Owned Reserve
  - Nature Reserve
  - Houseboat Moorings
  - Potential Linear trail link along Murray River
  - 28 Open Space Resource Number



**TREDWELL**

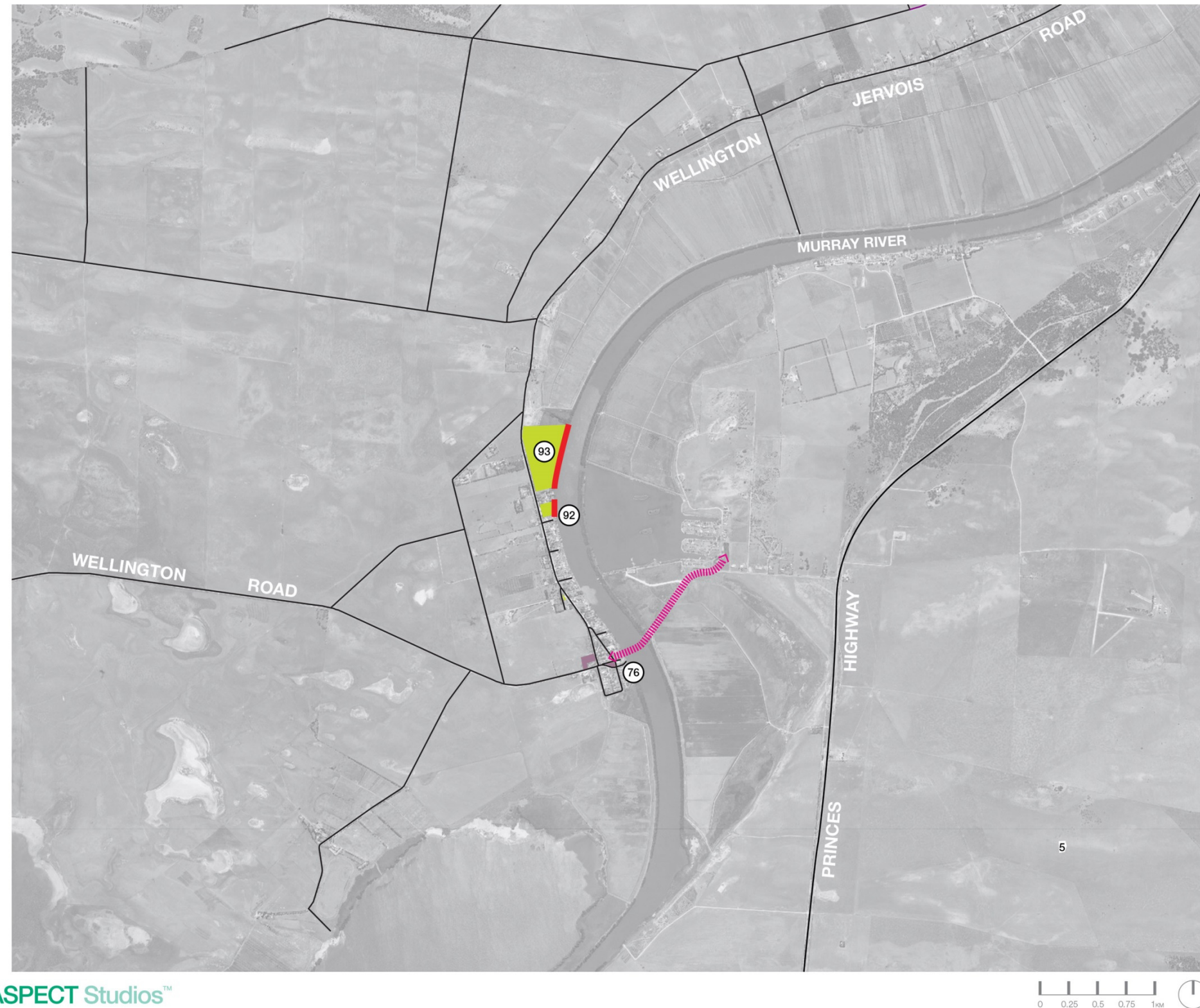
**ASPECT Studios™**

**Figure 7: Mypolonga Open Space Key Map**





- KEY**
- Open Space waterfront reserve with unstructured recreation facilities
  - Other
  - Houseboat Mooring
  - Potential Link
  - Open Space Resource Number

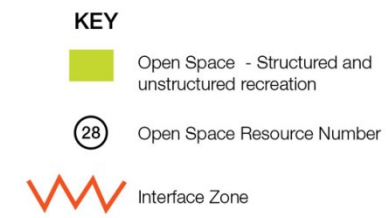


**TREDWELL**

ASPECT Studios™

Figure 8: Wellington Open Space Key Map





**TREDWELL**

ASPECT Studios™

Figure 9: Monarto Open Space Key Map





## COUNCIL WIDE OPEN SPACE STRATEGIES

**Overview:** The following strategies have been identified to cover key directions for open space development across the Council area. They focus more generally on the improvement of the broader public domain including streetscapes, linkages, environmental parks and sustainability of Council's assets with an aim to promote increased use of open spaces and the walkability of neighborhoods as well as improved biodiversity.

Strategies	Priority	Indicative Cost Bracket	Partners	Resources
<b>S1: Linkages:</b> Improve neighborhood walkability and accessibility for cyclists through development on an integrated trail network focusing on Murray Bridge but considering linkages to and within other townships with reference made to the Murray Bridge Bicycle Plan proposed bicycle network.	High		DPTI/ PIRSA/ SA Water SA Recreational Trails Incorporated	Internal staff time External consultancies Funding: Council & external sources
<b>S1.1:</b> Develop key recreational trails including; <ul style="list-style-type: none"> <li>– Improved definition and quality of Lavender Federation Walking Trail including wayfinding and interpretive signage</li> <li>– River trails (eg Murray River levee banks and cliff tops, Bremer River)</li> <li>– Horse trails through buffers (eg. Gifford Hill development – linking to township)</li> </ul>	High	High	DPTI/ PIRSA/ SA Water SA Recreational Trails Incorporated	Internal staff time External consultancies Funding: Council & external sources
<b>S1.2:</b> Improve pedestrian / bike links within the Murray Bridge township through streetscape upgrades and linking nature reserves (eg Princes Highway/ Adelaide Road) in line with the Town Centre Master Plan, Urban Design Framework and Bicycle Plan. Improvements should include upgraded path surfaces and widths in accordance with relevant standards and guidelines as well as the generous provision of natural (tree) shade.	Med	High	DPTI/ PIRSA/ SA Water SA Recreational Trails Incorporated	Internal staff time External consultancies Funding: Council & external sources
<b>S1.3:</b> Work with Partners to develop and promote key reserves (possibly outside of Council control) as recreational trail destinations eg Tower Hill.	Med	Med	DEWNR/ PIRSA	Internal staff time External consultancies Funding: Council & external sources
<b>S1.4:</b> Prepare a promotional strategy to encourage increased trail usage.	Med	Med	DPTI/ PIRSA/ SA Water SA Recreational Trails Incorporated	Internal staff time External consultancies Funding: Council & external sources
<b>S1.5:</b> Prepare a Trails Master Plan for the Rural City of Murray Bridge. Refer also to Volume II Sport and Recreation Strategy, Strategy 22 Trails.	Med	Med	DEWNR/ PIRSA	Internal staff time External consultancies Funding: Council & external sources





COUNCIL WIDE OPEN SPACE STRATEGIES				
Strategies	Priority	Indicative Cost Bracket	Partners	Resources
<b>S2: Biodiversity:</b> Improve flora and fauna diversity and ecological links through continued revegetation/ restoration of natural reserves and road corridors through use of native species.	Med		Murray Darling Basin NRM Board Greening Australia	Internal staff time Funding: Council & external sources
<b>S2.1:</b> Key focus areas should be as follows; <ul style="list-style-type: none"> <li>– OSR8:Hume Reserve, Murray Bridge</li> <li>– OSR18:Wattle Street Reserve, Murray Bridge</li> <li>– OSR28:Swanport Reserve, Murray Bridge</li> <li>– OSR74:Hill Road Reserve, Mypolonga</li> <li>– OSR85:Murray Flora &amp; Fauna Reserve Park (Murray Park), Murray Bridge</li> <li>– OSR99:Riverglades Wetlands</li> </ul>	Med	Med	Murray Darling Basin NRM Board Greening Australia	Internal staff time External consultancies Funding: Council & external sources
<b>S3: WSUD:</b> Incorporate principles of Water Sensitive Urban Design (WSUD) to parks and reserves throughout the council area in keeping with the strategies identified in the Integrated Water Management Plan and Stormwater Management Plan.	High	Med	Murray Darling Basin NRM Board	Internal staff time External consultancies Funding: Council & external sources
– <b>S3.1</b> Utilise the old racecourse and adjacent golf course as a demonstration site for integrated wetlands, bioretention and recreation spaces as a part of the new residential development proposed for the site.	High	Med	Murray Darling Basin NRM Board	Internal staff time External consultancies Funding: Council & external sources
– <b>S3.2</b> Develop an Irrigation Management Plan and establish a hierarchy for irrigation demand based on the established open space hierarchy. Priority for irrigation supply should be given to Regional and District level reserves.	Med	Low		Internal staff time External consultancies Funding: Council & external sources
– <b>S3.3</b> Undertake further investigation into stormwater harvesting and managed aquifer storage systems for supply of additional irrigation water within the City of Murray Bridge. Focus areas to be; Old Racecourse Site, Land Adjacent to Cemetery and possibly Sturt Reserve (if the proposed Indoor Sport and Leisure Centre relocation were to not proceed).	High	Med	Murray Darling Basin NRM Board	Internal staff time External consultancies Funding: Council & external sources
– <b>S3.4</b> Develop a palette of drought tolerant and low water use native plant species to be used throughout parks and reserves within the Council area.	High	Low		Internal staff time Funding: Council
<b>S4: Tourism:</b> Maximise the potential for tourism through the enhancement of existing assets such as the river frontage and network of reserves and building upon existing river based recreational activities including: <ul style="list-style-type: none"> <li>– Houseboats and paddlesteamers</li> <li>– Water skiing and swimming</li> </ul>	High	Major		Internal staff time External consultancies Funding: Council & external sources





## COUNCIL WIDE OPEN SPACE STRATEGIES

– Passive and active recreation in the riverside reserves				
<p>– <b>S4.1</b> Many of the strategies and actions included within the MBSROSS are focused on the promotion of tourism in the region through targeted enhancement of open space and the public realm. Key Regional Level open spaces include ;</p> <ul style="list-style-type: none"> <li>– OSR1 Sturt Reserve</li> <li>– OSR2 Sturt Reserve – Hume Reserve Link</li> <li>– OSR3 Pine Park</li> <li>– OSR4 Edwards Square</li> <li>– OSR5 Diamond Park</li> <li>– OSR6 War Memorial Playground</li> <li>– OSR7 Showgrounds</li> <li>– OSR95 Rocky Gully Wetlands</li> </ul> <p>Volume III identifies strategies and associated actions for improvements to these spaces, where appropriate.</p>	High	Major		Internal staff time External consultancies Funding: Council & external sources
<p>– <b>S4.2</b> Improvements to sport and recreation facilities will also attract visitors from a wider area. Volume II of the MBSROSS includes several strategies and actions to improve facilities in the region, with specific proposals to be investigated further including ;</p> <ul style="list-style-type: none"> <li>– Strategy 1 Regional Sports Precincts - Showgrounds</li> <li>– Strategy 2 Regional Sports Precincts – Existing racecourse</li> <li>– Strategy 5 Combined Indoor &amp; Aquatic facilities at Sturt Reserve</li> <li>– Strategy 8 Sturt Reserve</li> <li>– Strategy 12 Gifford Hill development</li> </ul>	High	Major		Internal staff time External consultancies Funding: Council & external sources
<p><b>S5: Indigenous:</b> Adopt good communication and land management strategies in accordance with the Kungun Ngarrindjeri Yunna agreement when planning for and developing open space areas in the Rural City of Murray Bridge.</p>	High	Med	Ngarrindjeri Regional Authority	Internal staff time External consultancies Funding: Council & external sources
<p>– <b>S5.1</b> Take opportunities to involve local aboriginal people in environmental enhancement projects, making use of their local knowledge, traditions and expertise. Opportunities might include strategies/actions identified for the following open spaces:</p> <ul style="list-style-type: none"> <li>– OSR1 Sturt Reserve</li> <li>– OSR2 Sturt Reserve – Hume Reserve Link</li> <li>– OSR8 Hume Reserve</li> <li>– OSR26 Thiele Reserve</li> <li>– OSR28 Swanport Reserve</li> <li>– OSR99 Riverglades Wetlands</li> </ul>	High	Low	Ngarrindjeri Regional Authority	Internal staff time External consultancies Funding: Council & external sources





## COUNCIL WIDE OPEN SPACE STRATEGIES

– <b>S5.2</b> Identify suitable locations/open spaces where elders can pass on their knowledge, skills and experiences to young aboriginal people and also provide opportunities for other traditional activities such as dance.	High	Low	Ngarrindjeri Regional Authority	Internal staff time Funding: Council & external sources
– <b>S5.3</b> Volume II contains specific actions targeted at developing talent pathways and promoting participation in sport and recreation activities: – Strategy 36 Promote Participation of Young People Actions 36.9 & 36.10			Ngarrindjeri Regional Authority	
<b>S6: Playgrounds:</b> Improve the provision, quality and diversity of playgrounds, with resources linked to open space hierarchy and established need.	High	High		Internal staff time External consultancies Funding: Council & external sources
– <b>S6.1</b> Develop a Playground Strategy that investigates further proposed locations for establishing new playgrounds or enhancing existing playgrounds; – OSR1 Sturt Reserve – OSR3 Pine Park – OSR6 War Memorial Playground – OSR10 Le Messurier Oval – OSR18 Wattle Street – OSR24 Wickens Reserve – OSR72 Irene Hughes Park (Mypolonga)	High	High		Internal staff time External consultancies Funding: Council & external sources
– <b>S6.2</b> Investigate opportunities to develop an 'All Abilities' playground at one of the Regional level open spaces.	Med	High		Internal staff time External consultancies Funding: Council & external sources
<b>S7: Dog Parks:</b> Establish a network of open spaces as suitable locations for dog exercising, including provision of off-leash dog parks where dogs can be exercised without a leash, thereby improving the health and fitness of both dog and owner and increasing opportunities for dog socialisation. Reference should be made to the forthcoming South Australia Guidelines for Dog Parks (Dog & Cat Management Board).	High	Med	OPAL Dog & Cat Management Board	Internal staff time External consultancies Funding: Council & external sources
– <b>S7.1</b> Formalised off-leash dog parks established at the following locations; – OSR11 Johnstone Park, Murray Bridge – OSR14 Tim Overall Reserve, Murray Bridge – OSR15 Kuchel Park, Murray Bridge – OSR32 White Park, Murray Bridge	High	Med	OPAL Dog & Cat Management Board	Internal staff time Funding: Council & external sources
– <b>S7.2</b> Investigate the establishment of further off-leash dog parks and formalising a network of dog-friendly exercise areas, subject to popularity and demand.	Med	Med	OPAL Dog & Cat Management Board	Internal staff time Funding: Council & external sources





## COUNCIL WIDE OPEN SPACE STRATEGIES

– <b>S7.3</b> Develop a Dog Off-Leash Strategy that establishes a balanced policy approach to address the open space requirements for dog owners, with consideration of all other potential park users.	Med	Med	OPAL Dog & Cat Management Board	Internal staff time External consultancies Funding: Council & external sources
– <b>S7.4</b> Identify environmentally sensitive areas that may require the exclusion of dogs, for example, areas with breeding birds or mammals, and consider establishing 'Dog Prohibited Areas'.	High	Low	OPAL Dog & Cat Management Board	Internal staff time External consultancies Funding: Council & external sources
– <b>S8: Signage &amp; Wayfinding:</b> Develop a Signage Strategy to improve accessibility, circulation and town 'branding', addressing: <ul style="list-style-type: none"> <li>– Entry/Gateway signage</li> <li>– Heritage Identification and Interpretation</li> <li>– Environmental Interpretation</li> <li>– Wayfinding/trail markers</li> <li>– Hazard Identification.</li> </ul>	Med	Med		Internal staff time External consultancies Funding: Council & external sources
– <b>S9: Public Art:</b> The Murray Bridge Town Centre Master Plan identifies the need for engaging public art, to be established at important gateways to identify an arrival point and within open space, where it would enhance appearance and visibility and encourage usage of open spaces.	Med	Med		Internal staff time External consultancies Funding: Council & external sources
– <b>S9.1</b> Public art projects in the town centre currently proposed include: <ul style="list-style-type: none"> <li>– At gateways to the Commercial Precinct</li> <li>– Sixth Street – public art 'corridor'</li> <li>– Potential to use flour mill and silos as a 'blank canvas' for public art</li> <li>– Within the Parklands Precinct (Pine Park to War Memorial Playground)</li> <li>– Bridge Street – entry statement sculpture.</li> </ul>	Med	High		Internal staff time External consultancies Funding: Council & external sources
– <b>S9.2</b> Prepare a Public Art Strategy for open space across Murray Bridge (including outlying areas), to integrate with and complement existing public art proposals for the region and build upon existing strengths such as the Regional Art Gallery.	Med	Med		Internal staff time Funding: Council & external sources

Table 3: Council Wide Open Space Strategies





OPEN SPACE RESOURCE 1: STURT RESERVE				
Analysis: Premier open space in Murray Bridge, providing a balance of open space with formal/informal sport and recreation provision. Hosts annual events for the region.				
Open Space Hierarchy: LOCAL   DISTRICT   <b>REGIONAL</b>				
Open Space Quality: LOW   MEDIUM   <b>HIGH</b>				
Actions	Priority	Indicative Cost Bracket	Partners	Resources
1.1 Develop Youth Precinct/Hub based around existing facilities such as play area, 'Rage Cage' and skate park. Consider relocation of BMX track to another location within Sturt Reserve to accommodate an expanded skate park.	High	Med	N/A	Internal staff time External consultancies Funding: Council & external sources
1.2 Improve park entrance and visual connection to the river through selective tree removal, consolidation of tennis courts and enhanced landscaping.	High	Med	N/A	Internal staff time External consultancies Funding: Council & external sources
1.3 Improve park infrastructure and path links to support increased activation eg. event space or unstructured recreation. Riverside path forms part of the Murray Bridge Bicycle Plan recreational bicycle network.	Med	Med	N/A	Internal staff time Funding: Council & external sources
1.4 Upgrade playspace including nature play elements, additional BBQ/picnic facilities and extensive landscaped areas with tree plantings for shade.	Low	Med	N/A	Internal staff time External consultancies Funding: Council & external sources
1.5 Consider an events program to increase use of the park.	High	Low	N/A	Internal staff time Funding: Council & external sources





OPEN SPACE RESOURCE 1: STURT RESERVE				
Actions	Priority		Partners	Resources
1.6 Investigate opportunity for stormwater capture and harvesting along with extensive revegetation zones within western portion of the park.	Med	Low	Murray Darling Basin NRM Board	Internal staff time External consultancies Funding: Council & external sources
1.7 Investigate as a site for the development of a future regional indoor recreation and aquatic centre (refer Volume II Sport and Recreation Strategy). Note: Parts of Sturt Reserve were previously used for landfill and its suitability for use as a major facility would need to be further investigated.	Low	Major	Office of Rec and Sport	Internal staff time External consultancies Funding: Council & external sources
1.8 Consider strategies to maintain and enhance the existing old railway line, main rail yard and Old Shell Depot, and identify ways of further integrating these features further into the reserve.	Med	Med		Internal staff time External consultancies Funding: Council & external sources
1.9 Involve local Ngarrindjeri people to develop aboriginal interpretation and provide local environmental knowledge of the area.	Med	Low	Ngarrindjeri Regional Authority	Internal staff time External consultancies Funding: Council & external sources
1.10 Ensure all proposals are in accordance with the Ngarrindjeri Murrundi Management Plan No.1 (Murray Bridge Railway Precinct and Hume Reserve)	High	Low	Ngarrindjeri Regional Authority	Internal staff time Funding: Council & external sources
1.11 Refer to Volume II Sport and Recreation Strategy for details on sporting and active recreation initiatives (Strategies 5, 6, 8, 23 & 37).				

**Table 4: OSR1 Sturt Reserve**





OPEN SPACE RESOURCE 2: STURT RESERVE – HUME RESERVE LINK				
Analysis: Linear open space link between Sturt Reserve and Hume Reserve along the west bank of the Murray River. Trail follows the alignment of old railway line. The Wharf Precinct includes numerous heritage assets and the riverbank has numerous native and exotic plantings.				
Open Space Hierarchy:	LOCAL		DISTRICT	REGIONAL
Open Space Quality:	LOW		MEDIUM	HIGH
Actions	Priority	Indicative Cost Bracket	Partners	Resources
2.1 Develop a master plan to focus on the ‘Wharf Precinct’ with the aim of improving commercial opportunities, enhancing linkages along the waterfront and interpreting the site’s history, including integration and enhancement of the railway line, yard and Old Shell Depot. Particular reference should be made to the Management Plans for Hume Reserve and the Murray Bridge Railway Precinct.	High	Med	DPTI  DEWNR  Murray Bridge Riverboat, Rail & Steam Group Inc.	Internal staff time  External consultancies  Funding: Council & external sources
2.2 Undertake riparian vegetation restoration for improved biodiversity and water quality.	Med	Med	PIRSA  Murray Darling Basin NRM Board	Internal staff time  External consultancies  Funding: Council & external sources
2.3 Improve trail link to Hume Reserve. Link forms part of the Murray Bridge Bicycle Plan recreational bicycle network.	High	Low	DEWNR  SA Recreational Trails Incorporated	Internal staff time  External consultancies  Funding: Council & external sources
2.4 Involve local Ngarrindjeri people to develop aboriginal interpretation and provide local environmental knowledge of the area.	Med	Low	Ngarrindjeri Regional Authority	Internal staff time  External consultancies  Funding: Council & external sources
2.5 Ensure all proposals are in accordance with the Ngarridjeri Murrundi Management Plan No.1 (Murray Bridge Railway Precinct and Hume Reserve).	High	Low	Ngarrindjeri Regional Authority	Internal staff time  Funding: Council & external sources

Table 5: OSR2 Sturt Reserve – Hume Reserve Link





### OPEN SPACE RESOURCE 3: PINE PARK

**Analysis:** Eastern most reserve of a string of four centrally located parks and located directly adjacent to Council offices and facilities. Landscape dominated by mature formal avenues of pine trees.

**Open Space Hierarchy:** LOCAL | DISTRICT | **REGIONAL**

**Open Space Quality:** LOW | **MEDIUM** | HIGH

Actions	Priority	Indicative Cost Bracket	Partners	Resources
3.1 Upgrade park to a standard comparable to the other adjacent parks.  Suggested park enhancements include; - removal of redundant concrete slabs - selective pine tree removals to open the reserve for more activities and to reinforce the central avenue (subject to community consultation).	High	Med		Internal staff time  External consultancies  Funding: Council & external sources
3.2 Explore opportunities for increased activation through the incorporation of petanque, half- court basketball, outdoor ping pong and small playground.	High	Med		Internal staff time  External consultancies  Funding: Council & external sources

Table 6: OSR3 Pine Park





#### OPEN SPACE RESOURCE 4: EDWARDS SQUARE

**Analysis:** A well maintained civic park which serves as a gateway to the main town centre along the Princes Highway. It includes a small covered stage/soundshell and is home to the Senior Citizens Centre.

**Open Space Hierarchy:** LOCAL | DISTRICT | **REGIONAL**

**Open Space Quality:** LOW | MEDIUM | **HIGH**

Actions	Priority	Indicative Cost Bracket	Partners	Resources
4.1 Continue to maintain at current levels.	High			Internal staff time
4.2 Improve links to adjacent open space. Opportunities available to link with the proposed main road bicycle network (Murray Bridge Bicycle Plan).	Med	Low		Internal staff time External consultancies Funding: Council & external sources

Table 7: OSR4 Edwards Square





### OPEN SPACE RESOURCE 5: DIAMOND PARK

**Analysis:** A formal civic park opposite Edwards Square which similarly serves as a ‘gateway’ park to the main town centre on the Princes Highway. It has well established trees, ornamental plantings and lawn areas with an extensive formalised path network. Park also includes public toilets, interpretation, public art and memorials.

**Open Space Hierarchy:** LOCAL | DISTRICT | **REGIONAL**

**Open Space Quality:** LOW | MEDIUM | **HIGH**

Actions	Priority	Indicative Cost Bracket	Partners	Resources
5.1 Continue to maintain at current levels.	High			Internal staff time
5.2 Review location of toilet block for improved safety and surveillance.	Med	Low		Internal staff time External consultancies Funding: Council & external sources

Table 8: OSR5 Diamond Park





OPEN SPACE RESOURCE 6: WAR MEMORIAL PLAYGROUND				
Analysis: A largely neglected reserve with some established perimeter of trees and limited play equipment. Stone memorial gates commemorating those who fought in the Second World War are located at the corner of the reserve closest to the town centre, with a plaque in the centre of the park.				
Open Space Hierarchy:	LOCAL		DISTRICT	REGIONAL
Open Space Quality:	LOW		MEDIUM	HIGH
Actions	Priority	Indicative Cost Bracket	Partners	Resources
6.1 Improve path links to Diamond Park. Opportunities available to link with the proposed main road bicycle network (Murray Bridge Bicycle Plan).	High	Low		Internal staff time Funding: Council
6.2 Upgrade reserve including; <ul style="list-style-type: none"><li>- Extended perimeter fencing</li><li>- Irrigated grassed areas</li><li>- Playground (with possible link to adjacent child care)</li><li>- Path network</li><li>- Picnic facilities</li></ul>	Med	Low	Murray Bridge & District Historical Society	Internal staff time External consultancies Funding: Council & external sources
6.3 Assess current condition of war memorial and undertake any restoration/maintenance works required	Med	Low		Internal staff time Funding: Council

Table 9: OSR6 War Memorial Playground





## OPEN SPACE RESOURCE 7: SHOWGROUNDS

**Analysis:** A regional level sport, recreation and events space located on the eastern edge of the city with views back to the town centre. Its location behind commercial premises off Princes Highway makes it difficult to locate for first time visitors and casual surveillance is limited. Recent tree planting around the main oval has helped to improve the exposed nature of the site.

**Open Space Hierarchy:** LOCAL | DISTRICT | **REGIONAL**

**Open Space Quality:** LOW | **MEDIUM** | HIGH

Actions	Priority	Indicative Cost Bracket	Partners	Resources
7.1 Reinforce the site's position as a premier space for major show events through; <ul style="list-style-type: none"><li>- Gateway signage/landscape treatment off Princes Highway</li><li>- Additional tree planting for natural shade</li><li>- Covered pedestrian links between cluster of buildings in the centre of the site</li><li>- Investigate the upgrade/relocation of basketball stadium (major project).</li></ul>	High	Med		Internal staff time External consultancies Funding: Council & external sources
7.2 Refer to Volume II Sport and Recreation Strategy for details on sporting and active recreation initiatives (Strategies 1 & 6).				

Table 10: OSR7 Showgrounds





## OPEN SPACE RESOURCE 8: HUME RESERVE

**Analysis:** Undeveloped riverfront reserve with boat ramp and moorings. The reserve has extensive cleared area from previous use as boat launch area, but now rarely used. Identifies areas of Aboriginal significance.

**Open Space Hierarchy:** LOCAL | **DISTRICT** | REGIONAL

**Open Space Quality:** LOW | MEDIUM | HIGH

Actions	Priority	Indicative Cost Bracket	Partners	Resources
8.1 Improve and maintain boat ramp facilities & associated amenities.	High	Low	PIRSA	Internal staff time External consultancies Funding: Council & external sources
8.2 Undertake revegetation/riparian restoration project.	Low	Med	Murray Darling Basin NRM Board SA Water	Internal staff time External consultancies Funding: Council & external sources
8.3 Consider involvement of local Ngarrindjeri people to develop aboriginal interpretation and provide local environmental knowledge of the area.	Med	Low	Ngarrindjeri Regional Authority	Internal staff time External consultancies Funding: Council & external sources
8.4 Improve trail quality and linkages, including wayfinding signage to town, Lavender Federation Trail etc. Opportunities to link with the proposed recreational bicycle network (Murray Bridge Bicycle Plan).	High	Med	DEWNR SA Recreational Trails Incorporated	Internal staff time External consultancies Funding: Council & external sources

**Table 11: OSR8 Hume Reserve**





#### OPEN SPACE RESOURCE 9: TAMARISK STREET RESERVE

**Analysis:** A reserve dominated by native vegetation with small pockets of open spaces. Located in a quiet residential area some distance from the town and other open space assets, but well connected by the surrounding street network.

**Open Space Hierarchy:** LOCAL | **DISTRICT** | REGIONAL

**Open Space Quality:** LOW | MEDIUM | **HIGH**

Actions	Priority	Indicative Cost Bracket	Partners	Resources
9.1 Consider development of a management plan to improve vegetation quality (potential bush-care site.)	Med	Low	Murray Darling Basin NRM Board Greening Australia/ Bush Care	Internal staff time Funding: Council & external sources
9.2 Improve park links through main reserve and include low key picnic facilities.	Med	Low		Internal staff time External consultancies Funding: Council & external sources

Table 12: OSR9 Tamarisk Street Reserve





## OPEN SPACE RESOURCE 10: LE MESSURIER OVAL

**Analysis:** A sports reserve dominated by an AFL/cricket oval with clubrooms and limited passive open space. Informal parking is located around the periphery of the oval.

**Open Space Hierarchy:** LOCAL | **DISTRICT** | REGIONAL

**Open Space Quality:** LOW | **MEDIUM** | HIGH

Actions	Priority	Indicative Cost Bracket	Partners	Resources
10.1 Formalise pedestrian circulation by providing a ring path around the oval perimeter.	High	Med		Internal staff time Funding: Council & external sources
10.2 Consider new play area in south-east corner of the reserve.	Med	Med		Internal staff time Funding: Council & external sources
10.3 Refer to Volume II Sport and Recreation Strategy for details on sporting and active recreation initiatives (Strategy 11).				

**Table 13: OSR10 Le Messurier Oval**





OPEN SPACE RESOURCE 11: JOHNSTONE PARK				
Analysis: Sporting focus with AFL/cricket oval, netball, tennis, dog obedience club and other buildings/facilities. The reserve is well connected due to its central location and has high visibility due to its location on Adelaide Road.				
Open Space Hierarchy: LOCAL   DISTRICT   REGIONAL				
Open Space Quality: LOW   MEDIUM   HIGH				
Actions	Priority	Indicative Cost Bracket	Partners	Resources
11.1 Prepare a master plan for the reserve that considers; <ul style="list-style-type: none"><li>- Feasibility of relocating the basketball stadium to the site</li><li>- Consolidation of existing buildings /clubrooms</li><li>- Improved pedestrian links – especially to the shared use bike/pedestrian way on Princes Highway. Opportunities to link with the proposed main road bicycle network (Murray Bridge Bicycle Plan).</li><li>- Incorporation of unstructured recreation activities</li><li>- DDA compliant access to clubrooms and facilities</li><li>- Improve visual prominence to Princes Highway</li></ul>	Med	Major	Office of Rec and Sport	Internal staff time External consultancies Funding: Council & external sources
11.2 Refer to Volume II Sport and Recreation Strategy for details on sporting and active recreation initiatives (Strategies 2 & 9).				

Table 14: OSR11 Johnstone Park





OPEN SPACE RESOURCE 12: CHRISTIAN RESERVE				
Analysis: Reserve with formal sports facilities and large areas of open space. A portion of the site is used for stormwater detention. Site includes some low key play facilities and park amenities. Established tree cover makes it a popular reserve for the surrounding local residential area.				
Open Space Hierarchy: LOCAL   <b>DISTRICT</b>   REGIONAL				
Open Space Quality: LOW   <b>MEDIUM</b>   HIGH				
Actions	Priority	Indicative Cost Bracket	Partners	Resources
12.1 Improve path links throughout the reserve with connections into the residential areas. Opportunities to link with the proposed main road bicycle network (Murray Bridge Bicycle Plan).	Med	Low		Internal staff time Funding: Council
12.2 Explore the feasibility of relocating the grassed tennis courts from Sturt Reserve.	Med	Major	Office of Rec and Sport	Internal staff time External consultancies Funding: Council & external sources
12.3 Upgrade detention basins incorporating additional plantings, recreational trails and other park amenities to encourage usage of this significant portion of the reserve.	Med	High		Internal staff time Funding: Council
12.4 Refer to Volume II Sport and Recreation Strategy for details on sporting and active recreation initiatives (Strategies 8 & 10).				

Table 15: OSR12 Christian Reserve





OPEN SPACE RESOURCE 13: HOMBURG PARK				
Analysis: This important reserve located within the southern residential area of the city has a mix of unstructured and structured recreational uses.				
Open Space Hierarchy:	LOCAL		DISTRICT	REGIONAL
Open Space Quality:	LOW		MEDIUM	HIGH
Actions	Priority	Indicative Cost Bracket	Partners	Resources
13.1 Promote use of the park for bike users by enhancing BMX track and Cycle Speedway facilities.	Med	High		Internal staff time External consultancies Funding: Council & external sources
13.2 Explore opportunities for undertaking revegetation and public artworks involving the local young people and adjoining primary school.	Med	Med	Fraser Park Primary School	Internal staff time External consultancies Funding: Council & external sources
13.3 Upgrade detention basins incorporating additional plantings, recreational trails and other park amenities to encourage usage of this significant portion of the reserve.	Med	Med		Internal staff time Funding: Council
13.4 Consider options to sell parts of the reserve not currently utilised to maximum potential, and where this would not impact upon the valued amenities of the park, subject to public consultation and regulatory approval.	Med			Internal staff time

Table 16: OSR13 Homburg Park





**OPEN SPACE RESOURCES 14-17: DISTRICT LEVEL OPEN SPACE RESERVES – MAINTAINED AT CURRENT LEVELS**

**Reserves:**

- OSR14 Tim Overall Reserve
- OSR15 Kuchel Park
- OSR16 Avoca Dell Reserve
- OSR17 Wharf Hill Reserve

**Open Space Hierarchy:** LOCAL | **DISTRICT** | REGIONAL

**Open Space Quality:** LOW | MEDIUM | **HIGH**

**Actions**

14.1-17.1 Continue to maintain at current levels.

**Priority**

Med

**Partners**

**Resources**

Internal staff time  
Funding: Council & external sources

**Table 17: District Level Open Space Reserves**





OPEN SPACE RESOURCE 18: WATTLE STREET RESERVE				
Analysis: A small island of open space located in a residential area. Features some established trees and an open grassed space.				
Open Space Hierarchy:	LOCAL		DISTRICT	REGIONAL
Open Space Quality:	LOW		MEDIUM	HIGH
Actions	Priority	Indicative Cost Bracket	Partners	Resources
18.1 Develop a small section of reserve between Alma Ave and Wattle Street as pocket park including picnic area and junior playground.	High	Med		Internal staff time External consultancies Funding: Council & external sources

Table 18: OSR18 Wattle Street Reserve





**OPEN SPACE RESOURCE 19: ADELAIDE ROAD PLANTATION**

**Analysis:** This area (which runs adjacent to Adelaide Rd) includes natural scrub and grassed areas and currently has informal bike tracks throughout.

**Open Space Hierarchy:** LOCAL | DISTRICT | REGIONAL

**Open Space Quality:** LOW | MEDIUM | HIGH

Actions	Priority	Indicative Cost Bracket	Partners	Resources
19.1 Investigate the feasibility of developing a multi-use trail throughout this reserve. Opportunities to link with the proposed main road bicycle network (Murray Bridge Bicycle Plan).	Low	Med		Internal staff time External consultancies Funding: Council & external sources

Table 19: OSR19 Adelaide Road Plantation





## OPEN SPACE RESOURCE 20: CAREY'S PARK

**Analysis:** This area (which runs adjacent to Mannum Rd) includes natural scrub/trees and grassed areas.

**Open Space Hierarchy:** LOCAL | DISTRICT | REGIONAL

**Open Space Quality:** LOW | MEDIUM | HIGH

Actions	Priority	Indicative Cost Bracket	Partners	Resources
20.1 Investigate the feasibility of developing a multi-use trail throughout this reserve.	Low	Low		Internal staff time External consultancies Funding: Council & external sources

Table 20: OSR20 Carey's Park





## OPEN SPACE RESOURCE 21: WATTS ROAD STONE RESERVE

**Analysis:** This is a medium sized reserve which used to be a rubble pit. This location has the potential to be developed as a lookout, but its current condition is poor and the land is covered by shrubs and weeds. There are panoramic views available from this location.

**Open Space Hierarchy:** LOCAL | DISTRICT | REGIONAL

**Open Space Quality:** LOW | MEDIUM | HIGH

Actions	Priority	Indicative Cost Bracket	Partners	Resources
21.1 Investigate the feasibility of developing a lookout facility at this location, which might include seating, shelter etc.	Low	Med		Internal staff time External consultancies Funding: Council & external sources

Table 21: OSR21 Watts Road Stone Reserve





**OPEN SPACE RESOURCE 22: MURRAY PARK**

**Analysis:** Nature reserve (Bush Care site) located at the edge of the residential zone which serves as a valuable biodiversity site and a buffer to light industrial areas.

**Open Space Hierarchy:** LOCAL | DISTRICT | REGIONAL

**Open Space Quality:** LOW | MEDIUM | HIGH

Actions	Priority	Indicative Cost Bracket	Partners	Resources
22.1 Continue to maintain at current levels including assistance with facilitating ongoing volunteer revegetation programs, low key infrastructure upgrades. Identify formal trails and close informal and unsustainable tracks. Recognise further the historical importance of this park.	High	Low	Murray Darling Basin NRM Board  Greening Australia	Internal staff time

Table 22: OSR22 Murray Park





OPEN SPACE RESOURCE 23: PLOVER PARK

Analysis: This relatively undeveloped reserve includes a small playground and vegetated areas including some recent plantings with large areas of non-irrigated grass. It has good accessibility and surveillance from all directions.

Open Space Hierarchy: LOCAL | DISTRICT | REGIONAL

Open Space Quality: LOW | MEDIUM | HIGH

Actions	Priority	Indicative Cost Bracket	Partners	Resources
23.1 Develop an open irrigated grassed area suitable for informal recreation all year around	Med	Med	(where/if applicable)	Internal staff time  Funding: Council & external sources
23.2 Opportunities to link with the proposed main road bicycle network (Murray Bridge Bicycle Plan).	Low	Med		

Table 23: OSR23 Plover Park





**OPEN SPACE RESOURCE 24: WICKENS RESERVE**

**Analysis:** A small park with some established trees. Given the reserve’s proximity to Murray Bridge South Primary School, the extensive open grassed areas are suitable for informal sport/recreation activities.

**Open Space Hierarchy:** LOCAL | DISTRICT | REGIONAL

**Open Space Quality:** LOW | MEDIUM | HIGH

Actions	Priority	Indicative Cost Bracket	Partners	Resources
24.1 Upgrade existing facilities including new/retrofit public toilets, formalised paths and play areas.	Med	Med		Internal staff time External consultancies Funding: Council & external sources
24.2 Improve connectivity between school and park.	Med	Low	Murray Bridge South Primary School	Internal staff time External consultancies Funding: Council & external sources
24.3 Establish more perimeter tree planting for improved shade.	Med	Med		Internal staff time External consultancies Funding: Council & external sources

Table 24: OSR24 Wickens Reserve





**OPEN SPACE RESOURCE 25: LONG ISLAND RESERVE**

**Analysis:** A riverfront reserve providing good access to the river. Used primarily for launching of ski boats, jet skis and other water craft. Formalised parking and gravel link roads along riverfront to Sturt Reserve.

**Open Space Hierarchy:** LOCAL | DISTRICT | REGIONAL

**Open Space Quality:** LOW | MEDIUM | HIGH

Actions	Priority	Indicative Cost Bracket	Partners	Resources
25.1 Continue to maintain at current levels.	High			Internal staff time External consultancies Funding: Council & external sources
25.2 Formalise riverfront path/trail links to Sturt Reserve and south to Long Island Caravan Park. Opportunities to link with the proposed recreational bicycle network (Murray Bridge Bicycle Plan).	Med	Med		Internal staff time External consultancies Funding: Council & external sources

Table 25: OSR25 Long Island Reserve





OPEN SPACE RESOURCE 26: THIELE RESERVE				
Analysis: Riverside park used extensively for launching water craft. North-western orientation and perimeter location makes the site an attractive destination all year round. Current amenities include; public toilets, BBQ, picnic tables and small play areas with extensive irrigated grass areas and limited tree shade.				
Open Space Hierarchy: LOCAL   DISTRICT   REGIONAL				
Open Space Quality: LOW   MEDIUM   HIGH				
Actions	Priority	Indicative Cost Bracket	Partners	Resources
26.1 Continue to maintain at current levels.	High			Internal staff time
26.2 Provide additional tree plantings to car park and edge of grassed area.	Med	Low		Internal staff time External consultancies Funding: Council & external sources
26.3 Long term upgrade of public toilets.	Low	Med		Internal staff time Funding: Council
26.4 Explore opportunities to provide riverfront trail links to Avoca Dell. Opportunities to link with the proposed recreational bicycle network (Murray Bridge Bicycle Plan).	Low	Med		Internal staff time External consultancies Funding: Council & external sources
26.5 Involve local Ngarrindjeri people to develop aboriginal interpretation and provide local environmental knowledge of the area.	Med	Low	Ngarrindjeri Regional Authority	Internal staff time External consultancies Funding: Council & external sources

Table 26: OSR26 Thiele Reserve





OPEN SPACE RESOURCE 27: VANDERZON RESERVE

Analysis: Linear reserve functioning as a stormwater easement, connecting Torrens Road to Riverglades Wetlands.

Open Space Hierarchy: LOCAL | DISTRICT | REGIONAL

Open Space Quality: LOW | MEDIUM | HIGH

Actions	Priority	Indicative Cost Bracket	Partners	Resources
27.1 Improve trail signage and linkages to Riverglades Wetlands, Avoca Dell and potentially Thiele Reserve.	Med	Med		Internal staff time Funding: Council
27.2 Continue current levels of maintenance.	High			Internal staff time Funding: Council

Table 27: OSR27 Vanderzon Reserve





## OPEN SPACE RESOURCE 28: SWANPORT RESERVE

**Analysis:** Well treed riverfront reserve with public toilets, ageing park furniture and new perimeter path. No boat ramp makes the reserve a less popular choice than other reserves. The reserve sits immediately adjacent to the Murraylands Aquatic Centre with its heavily irrigated and well maintained open space.

**Open Space Hierarchy:** LOCAL | DISTRICT | REGIONAL

**Open Space Quality:** LOW | MEDIUM | HIGH

Actions	Priority	Indicative Cost Bracket	Partners	Resources
28.1 Capitalise on the relatively 'natural' aesthetic by undertaking riparian revegetation works.	Med	Med	PIRSA Greening Australia	Internal staff time External consultancies Funding: Council & external sources
28.2 Incorporate interpretive signage with links to education programs at the Aquatic Centre.	Med	Low	Murraylands Aquatic Centre	Internal staff time External consultancies Funding: Council & external sources
28.3 Improve pedestrian links to the Aquatic Centre and links to the wider area. Opportunities to link with the proposed recreational bicycle network (Murray Bridge Bicycle Plan).	Med	Low	Murraylands Aquatic Centre	Internal staff time External consultancies Funding: Council & external sources
28.4 Involve local Ngarrindjeri people to develop aboriginal interpretation and provide local environmental knowledge of the area.	Med	Low	Ngarrindjeri Regional Authority	Internal staff time External consultancies Funding: Council & external sources

**Table 28: OSR28 Swanport Reserve**





**OPEN SPACE RESOURCE 29: QUEEN LOUISA PARK**

**Analysis:** This is a strip of council owned land between private housing and the river frontage. It features a boat ramp and has the potential for linkage through to Swanport Wetlands.

**Open Space Hierarchy:** LOCAL | DISTRICT | REGIONAL

**Open Space Quality:** LOW | MEDIUM | HIGH

Actions	Priority	Indicative Cost Bracket	Partners	Resources
29.1 Explore the feasibility of creating a linkage between Queen Louisa Park and Swanport Wetlands.	Med	Med		Internal staff time External consultancies Funding: Council & external sources

Table 29: OSR29 Queen Louisa Park





## OPEN SPACE RESOURCES 30-64: LOCAL LEVEL OPEN SPACE RESERVES – MAINTAINED AT CURRENT LEVELS

### Reserves:

- OSR 30: Owl Drive Reserve
- OSR 31: Baden Powell Park
- OSR 32: White Park
- OSR 33: Totness Park
- OSR 34: Oak Avenue Reserve
- OSR 35: Rocky Gully Landfill
- OSR36: Lienert Reserve
- OSR 37: The Railway Precinct
- OSR 38: Dorset Street Reserve
- OSR 39: Progress Drive (Lot 335)
- OSR 40: Apex Park & Ridge Road Reserve
- OSR 41: Weigall Avenue Reserve
- OSR 42: Rollond Reserve
- OSR 43: Jaensch Rd/Oxford Street
- OSR 44: Jaensch Road Vacant Land
- OSR 45: Parish Crescent Reserve
- OSR 46: Knight St Reserve
- OSR 47: Wildens Way

- OSR 48: Tumbella Reserve
- OSR 49: Industry Road Reserve
- OSR 50: Phillip Street Reserve
- OSR 51: Johnstone Avenue Reserve
- OSR 52: Schubert Street Reserve
- OSR 53: McQuarrie Street Reserve
- OSR 54: East Side Parking Bay
- OSR 55: Torrens Road Reserve
- OSR 56: Emu Road\*
- OSR 57: McNamara Park \*
- OSR 58: Raymond Road Reserve\*
- OSR 59: Bungana Drive Reserve\*
- OSR 60: Myrtle Avenue Reserve\*
- OSR 61: Corella Place\*
- OSR 62: Frank Jackman Lookout Reserve \*
- OSR 63: Ellendale Avenue Reserve\*
- OSR 64: Jubilee Park\*

Open Space Hierarchy: LOCAL | DISTRICT | REGIONAL

Open Space Quality: VARIES

Actions	Priority	Partners	Resources
30.1-64.1 Continue to maintain at current levels.	Med		Internal staff time  Funding: Council & external sources
56.2-64.2 For those reserves identified in the above list by an asterisk*, consider options to sell the reserve (in entirety or in part) where it is not currently utilised to its maximum potential, and where this would not adversely impact upon the valued amenities of the reserve or the surrounding area, subject to public consultation and regulatory approval.	Med		Internal staff time

Table 30: OSR 30-64 Local Level Open Space Reserves





OPEN SPACE RESOURCE 65: HEFFORD DRIVE RESERVE (CALLINGTON)

Analysis: This reserve is a relatively undeveloped linear reserve along the banks of the Bremer River. There is an opportunity to improve the amenity and presence of this reserve.

Open Space Hierarchy: LOCAL | DISTRICT | REGIONAL

Open Space Quality: LOW | MEDIUM | HIGH

Actions	Priority	Indicative Cost Bracket	Partners	Resources
65.1 Undertake park improvements in alignment with the Hefford Drive Reserve Community Land Management Plan.	Med	Med	District Council of Mount Barker	Internal staff time External consultancies Funding: Council & external sources

Table 31: OSR65 Hefford Drive Reserve (Callington)



**OPEN SPACE RESOURCE 66: GEISLER RESERVE (JERVOIS)**

**Analysis:** Area of unimproved land featuring well established trees.

**Open Space Hierarchy:** LOCAL | **DISTRICT** | REGIONAL

**Open Space Quality:** LOW | MEDIUM | HIGH

Actions	Priority	Indicative Cost Bracket	Partners	Resources
66.1 Upgrade park assets including signage, seating and gateway entry statement (link to Jervois Ferry).	Low	Med		Internal staff time External consultancies Funding: Council & external sources

Table 32: OSR66 Geisler Reserve (Jervois)





**OPEN SPACE RESOURCE 67: LANGHORNE CREEK ROAD STONE RESERVE (BOGGY LAKE)**

**Analysis:** Boggy Lake Reserve is a recreational plot used for sailing and windsurfing. The Goolwa to Wellington Local Action Group are currently revegetating this site. Potential to add shelter & toilets.

**Open Space Hierarchy:** LOCAL | **DISTRICT** | REGIONAL

**Open Space Quality:** LOW | MEDIUM | HIGH

Actions	Priority	Indicative Cost Bracket	Partners	Resources
67.1 Upgrade reserve to include a toilet block and shelter.	Low	Med		Internal staff time External consultancies Funding: Council & external sources

Table 33: OSR67 Langhorne Creek Road Stone Reserve (Boggy Lake)



OPEN SPACE RESOURCES 68-69: DISTRICT LEVEL CONSERVATION PARKS – MAINTAINED AT CURRENT LEVELS

Reserves:

- OSR68 Ferries McDonald Conservation Park
- OSR69 Monarto Conservation Park

Open Space Hierarchy: LOCAL | **DISTRICT** | REGIONAL

Open Space Quality: LOW | MEDIUM | **HIGH**

Actions	Priority	Indicative Cost Bracket	Partners	Resources
68.1-69.1 Continue to maintain at current levels.	Med			Internal staff time  Funding: Council & external sources

Table 34: ORS 68-69 District Level Conservation Parks





OPEN SPACE RESOURCE 70: JERVOIS OVAL

**Analysis:** Jervois Oval is community owned and is the major open space reserve within Jervois and serves as a community focal point. It primarily caters for sporting activities including Australian Rules Football, netball, cricket, and tennis. There is informal parking areas and ageing infrastructure.

**Open Space Hierarchy:** LOCAL | DISTRICT | REGIONAL

**Open Space Quality:** LOW | MEDIUM | HIGH

Actions	Priority	Indicative Cost Bracket	Partners	Resources
70.1 Prepare a master plan for the site and consider formalising the entrance and car parking, improved built facilities, pedestrian linkages and enhanced passive recreation provision.	High	High		Internal staff time External consultancies Funding: Council & external sources
70.2 Refer to Volume II Sport and Recreation Strategy for details on sporting and active recreation initiatives (Strategies 18 & 22)				

Table 35: OSR70 Jervois Oval



**OPEN SPACE RESOURCE 71: MYPOLONGA CIVIC PARK**

**Analysis:** Undeveloped reserve located at the entrance to Mypolonga and adjacent to the Institute building. Site is used as an informal car park.

**Open Space Hierarchy:** LOCAL | DISTRICT | REGIONAL

**Open Space Quality:** LOW | MEDIUM | HIGH

Actions	Priority	Indicative Cost Bracket	Partners	Resources
71.1 Provide Gateway landscape treatment to reinforce entrance into township and improve the appearance of the existing Institute building.	Low	Med		Internal staff time External consultancies Funding: Council & external sources

Table 36: OSR71 Mypolonga Civic Park





**OPEN SPACE RESOURCE 72: IRENE HUGHES PARK (MYPOLONGA)**

**Analysis:** Small local park situated on the main street of Mypolonga. Basic park facilities including a playground, picnic shelter and an interpretation shelter that gives insight into the Mypolonga Pump.

**Open Space Hierarchy:** LOCAL | DISTRICT | REGIONAL

**Open Space Quality:** LOW | MEDIUM | HIGH

Actions	Priority	Indicative Cost Bracket	Partners	Resources
72.1 Upgrade playground and associated picnic facilities.	Low	Med		Internal staff time Funding: Council

**Table 37: OSR72 Irene Hughes Park**



**OPEN SPACE RESOURCE 73: MYPOLONGA OVAL**

**Analysis:** Mypolonga Oval is community owned and is the major open space reserve within Mypolonga and serves as a community focal point. It primarily caters for sporting activities including Australian Rules Football, netball, cricket, and tennis. There is informal parking areas and ageing infrastructure.

**Open Space Hierarchy:** LOCAL | DISTRICT | REGIONAL

**Open Space Quality:** LOW | MEDIUM | HIGH

Actions	Priority	Indicative Cost Bracket	Partners	Resources
73.1 Prepare a master plan for the site and consider formalising the entrance and car parking, improved built facilities, pedestrian linkages and enhanced passive recreation provision.	Med	High		Internal staff time External consultancies Funding: Council & external sources
73.2 Refer to Volume II Sport and Recreation Strategy for details on sporting and active recreation initiatives (Strategies 20, 22 & 24).				

Table 38: OSR73 Mypolonga Oval





OPEN SPACE RESOURCE 74: HILL ROAD RESERVE (MYPOLONGA)

Analysis: Recently improved riparian revegetation site immediately behind levee bank.

Open Space Hierarchy: LOCAL | DISTRICT | REGIONAL

Open Space Quality: LOW | MEDIUM | HIGH

Actions	Priority	Indicative Cost Bracket	Partners	Resources
74.1 Continue to support community based revegetation programs and promote educational links.	Med	Low		Internal staff time External consultancies Funding: Council & external sources

Table 39: OSR74 Hill Road Reserve



**OPEN SPACE RESOURCE 75: WOODLANE RESERVE**

**Analysis:** Riverfront reserve with picnic facilities, boat ramp, grassed areas and car parking.

**Open Space Hierarchy:** LOCAL | DISTRICT | REGIONAL

**Open Space Quality:** LOW | MEDIUM | HIGH

Actions	Priority	Indicative Cost Bracket	Partners	Resources
75.1 Improve shelters, BBQ areas and car and boat trailer parking.	Med	Med		Internal staff time External consultancies Funding: Council & external sources
75.2 Improve signage and available information at reserve	High	Low		Internal staff time Funding: Council
75.3 Improve river bank access	Med	Med		Internal staff time Funding: Council

Table 40: OSR75 Woodlane Reserve





**OPEN SPACE RESOURCE 76: COURTHOUSE RESERVE (WELLINGTON)**

**Analysis:** Small pocket park with good quality tree coverage, located immediately adjacent to historic Court House building near ferry terminal.

**Open Space Hierarchy:** LOCAL | DISTRICT | REGIONAL

**Open Space Quality:** LOW | MEDIUM | HIGH

Actions	Priority	Indicative Cost Bracket	Partners	Resources
76.1 Improve park as tourist stop including picnic facilities, pathways and interpretation of town history.	Low	Low		Internal staff time External consultancies Funding: Council & external sources

Table 41: OSR76 Courthouse Reserve



OPEN SPACE RESOURCE 77: MONARTO OVAL

Analysis: Monarto Oval is a sporting oval and passive reserve developed when Monarto was earmarked as a Satellite City to Adelaide. The site has recently been enhanced with the provision of new play equipment.

Open Space Hierarchy: LOCAL | DISTRICT | REGIONAL

Open Space Quality: LOW | MEDIUM | HIGH

Actions	Priority	Indicative Cost Bracket	Partners	Resources
77.1 Retain as a local level sports ground and passive reserve. Upgrade built facilities and irrigate sporting reserve. Improve information and way finding signage for the Lavender Trail through the site.	Med	Med		Internal staff time External consultancies Funding: Council & external sources
77.2 Refer to Volume II Sport and Recreation Strategy for details on sporting and active recreation initiatives (Strategy 19).				

Table 42: OSR77 Monarto Oval





OPEN SPACE RESOURCE 78: MONARTO INTERFACE ZONE

**Analysis:** As a key initiative of Imagine Your Rural City 2020 vision for Monarto, a light industrial precinct is proposed in significant tracts of land as a Regional Employment Centre located between the Old Princes Highway and the South Eastern Freeway. It is important that any future development of this zone makes allowance for landscaped buffers to separate the new light industry precinct from adjacent incompatible land uses such as Monarto Zoo and other agricultural industries.

Open Space Hierarchy:                    LOCAL   |   DISTRICT   |   REGIONAL

Open Space Quality:                    LOW   |   MEDIUM   |   HIGH

Actions	Priority	Indicative Cost Bracket	Partners	Resources
78.1 Develop a landscape buffer to separate incompatible land uses adjacent to the proposed new Regional Employment Centre.	Med	High	Property Development	Internal staff time External consultancies Funding: Council & external sources

Table 43: OSR78 Monarto Interface Zone



**OPEN SPACE RESOURCES 79-94: OUTLYING AREAS - LOCAL LEVEL OPEN SPACE RESERVES – MAINTAINED AT CURRENT LEVELS**

**Reserves:**

- OSR 79: White Sands Reserve
  - OSR 80: Callington Hill Grassland
  - OSR 81: Jervois Ferry Reserve
  - OSR 82: Hann Road Reserve
  - OSR 83: River Vine Court Riverfront Reserve
  - OSR 84: River Glen Marina Reserve
  - OSR 85: Morphet Flora & Fauna Reserve
  - OSR 86: Woods Point Community Reserve
- OSR 87: Bells Landing Reserve
  - OSR 88: Rivergum Drive Reserve(Mypolonga)
  - OSR 89: Toora Reserve
  - OSR 90: Murrawong Reserve
  - OSR 91: Snakey Gully Reserve
  - OSR 92: Baker Reserve (Wellington)
  - OSR 93: Murrundi Reserve
  - OSR 94: Sunnyside Water Front Reserve & Cliff Reserves\*

**Open Space Hierarchy:** LOCAL | DISTRICT | REGIONAL

**Open Space Quality:** VARIES

Actions	Priority	Partners	Resources
79.1-94.1 Continue to maintain at current levels.	Med		Internal staff time  Funding: Council & external sources
94.2 For those reserves identified in the above list by an asterisk* (Sunnyside Waterfront Reserve and Cliff Reserves), consider options to sell the reserve (in entirety or in part) where it is not currently utilised to its maximum potential, and where this would not adversely impact upon the valued amenities of the reserve or the surrounding area, subject to public consultation and regulatory approval.	Med		Internal staff time

**Table 44: OSR 79-94 Outlying Areas - Local Level Open Space Reserves**





**OPEN SPACE RESOURCE 95: WETLANDS – ROCKY GULLY WETLANDS**

**Analysis:** Wetlands habitat with path links, bird hides, seating and interpretation with extensive marginal and terrestrial plantings.

**Open Space Hierarchy:** LOCAL | DISTRICT | **REGIONAL**

**Open Space Quality:** LOW | MEDIUM | **HIGH**

Actions	Priority	Partners	Resources
95.1 Continue to maintain at current levels.	Med		Internal staff time External consultancies Funding: Council & external sources

**Table 45: OSR95 Rocky Gully Wetlands**



### OPEN SPACE RESOURCE 96: NAROOMA WETLAND

**Analysis:** This wetland serves as a connection between Sturt Reserve and Long Island Reserve. It currently has walking trails present. This site presents a good opportunity for further development.

**Open Space Hierarchy:** LOCAL | **DISTRICT** | REGIONAL

**Open Space Quality:** LOW | **MEDIUM** | HIGH

Actions	Priority	Indicative Cost Bracket	Partners	Resources
96.1 Investigate the feasibility of upgrading / further developing /enhancing the wetland via linkages/trails linking Sturt Reserve with Long Island Reserve	Med	High		Internal staff time External consultancies Funding: Council & external sources

Table 46: OSR96 Narooma Wetland





OPEN SPACE RESOURCES 97-98: DISTRICT LEVEL WETLANDS – MAINTAINED AT CURRENT LEVELS

Reserves:

- OSR97 Casuarina Walk Reserve
- OSR98 Swanport Wetland

Open Space Hierarchy: LOCAL | **DISTRICT** | REGIONAL

Open Space Quality: VARIES

Actions	Priority	Partners	Resources
97.1-99.1 Continue to maintain at current levels.	Med		Internal staff time External consultancies Funding: Council & external sources

Table 47: OSR97-99 District Level Wetlands



**OPEN SPACE RESOURCE 99: RIVERGLADES WETLANDS**

**Analysis:** Linear riverfront reserve with access off Torrens Road. A well-established natural surface trail and sections of boardwalk which are well utilised by local residents and provide opportunities to view local flora and fauna.

**Open Space Hierarchy:** LOCAL | DISTRICT | REGIONAL

**Open Space Quality:** LOW | MEDIUM | HIGH

Actions	Priority	Indicative Cost Bracket	Partners	Resources
99.1 Improve trail signage and linkages to Avoca Dell and potentially Thiele Reserve - incorporate interpretation of local native flora and fauna.	Med	Med		Internal staff time Funding: Council
99.2 Consider involvement of local Ngarrindjeri people to develop aboriginal interpretation and provide local environmental knowledge of the area.	Med	Low	Ngarrindjeri Regional Authority	Internal staff time External consultancies Funding: Council & external sources
99.3 Continue current levels of maintenance.	High			Internal staff time Funding: Council

**Table 48: OSR99 Riverglades Wetlands**





OPEN SPACE RESOURCE 100: DISTRICT LEVEL DRAINAGE RESERVE - OLD SWANPORT ROAD

Analysis: This area has been well landscaped to include native vegetation and walking paths. It is a well-established reserve and is in excellent condition.

Open Space Hierarchy: LOCAL | **DISTRICT** | REGIONAL

Open Space Quality: LOW | MEDIUM | **HIGH**

Actions	Priority	Partners	Resources
100.1 Continue to maintain at current levels.	Med		Internal staff time External consultancies Funding: Council & external sources

Table 49: OSR100 Old Swanport Road Drainage Reserve



OPEN SPACE RESOURCE 101: PRODUCTION ROAD RESERVE

**Analysis:** This area is used as a water retention basin with no current recreational usage. It could be upgraded to include boardwalks, seating and landscaping to increase its recreational value.

**Open Space Hierarchy:** LOCAL | DISTRICT | REGIONAL

**Open Space Quality:** LOW | MEDIUM | HIGH

Actions	Priority	Indicative Cost Bracket	Partners	Resources
101.1 Investigate the feasibility of upgrading / further developing /enhancing the reserve via pathway development, landscaping etc.	Med	Med		Internal staff time External consultancies Funding: Council & external sources

Table 50: OSR101 Production Road Reserve





## OPEN SPACE RESOURCE 102: CLIPSAL ROAD (HOWARD RD) RESERVE

**Analysis:** This area is used as a water retention basin with no current recreational usage. The site could be investigated as a potential water harvesting location.

**Open Space Hierarchy:** LOCAL | DISTRICT | REGIONAL

**Open Space Quality:** LOW | MEDIUM | HIGH

Actions	Priority	Indicative Cost Bracket	Partners	Resources
102.1 Investigate the site's potential for becoming a water harvesting location	Med	Med	SA Water	Internal staff time External consultancies Funding: Council & external sources

Table 51: OSR102 Clipsal Road (Howard Rd) Reserve



OPEN SPACE RESOURCES 103-109: LOCAL LEVEL DRAINAGE RESERVES – MAINTAINED AT CURRENT LEVELS

<b>Reserves:</b> <ul style="list-style-type: none"><li>OSR 103: Homburg Drive Drainage Reserve</li><li>OSR 104: Greenlands Dr Drainage Reserve</li><li>OSR 105: Riverview Estate Reserve</li><li>OSR 106: Campbell Drive Reserve</li><li>OSR 107: Amanda Street Reserve</li><li>OSR 108: Hill Street Drainage Reserve</li><li>OSR 109: Jacaranda Street Stormwater Detention Basin</li></ul>			
<b>Open Space Hierarchy:</b> LOCAL   DISTRICT   REGIONAL			
<b>Open Space Quality:</b> VARIES			
Actions	Priority	Partners	Resources
103.1-109.1 Continue to maintain at current levels.	Med		Internal staff time  Funding: Council & external sources

Table 52: OSR103-109 Outlying Areas - Local Level Drainage Reserves





**OPEN SPACE RESOURCES 110-113: CEMETERIES – MAINTAINED AT CURRENT LEVELS**

**Reserves:**

- OSR 110: Bremer Road Cemetery
- OSR 111: Adelaide Road Cemetery
- OSR 112: Callington Cemetery
- OSR 113: Monarto Pioneer Memorial Cemetery

**Open Space Hierarchy:** LOCAL | DISTRICT | REGIONAL

**Open Space Quality:** VARIES

Actions	Priority	Partners	Resources
110.1-113.1 Continue to maintain at current levels.	Med		Internal staff time  Funding: Council & external sources

**Table 53: OSR110-113 Local Level Cemeteries**



#### OPEN SPACE RESOURCE 114: EXISTING RACECOURSE SITE

**Analysis:** The relocation of the race course and associated facilities to Gifford Hill will enable the existing racecourse to be developed for residential. A structure plan has been developed and includes the provision of two additional holes for the golf course, stormwater detention, motel, retirement village and a neighbourhood centre. The 'Newbridge' development structure plan does not indicate additional active or passive open space provision and given the level of planned residential provision additional open space should be provided for in the development.

**Open Space Hierarchy:** LOCAL | DISTRICT | REGIONAL

**Open Space Quality:** Not Applicable

Actions	Priority	Indicative Cost Bracket	Partners	Resources
114.1 Provide a regional level reserve suitable for active sport and passive recreation activities within the proposed development.	High	Major	Property Developers	Internal staff time External consultancies Funding: Council & external sources
114.2 Ensure adequate pedestrian and cycling linkages are provided for within the proposed development linking key facilities, reserves and residential areas.	High	Major	Property Developers	Internal staff time External consultancies Funding: Council & external sources
114.3 Develop integrated wetlands and stormwater detention including biofiltration within streets and reserves as a benchmark site for Water Sensitive Urban Design initiatives within the City.	High	Med	Property Developers Murray Darling Basin NRM Board	Internal staff time External consultancies Funding: Council & external sources
114.4 Refer to Volume II Sport and Recreation Strategy for details on sporting and active recreation initiatives (Strategies 2 & 9).				

**Table 54: OSR114 Existing Racecourse Site**





### OPEN SPACE RESOURCE 115: GIFFORD HILL RECREATION AREAS

**Analysis:** The proposed new Gifford Hill development will include numerous open spaces including sporting grounds, pocket parks, landscape buffers and unstructured recreation areas associated with new racecourse.

**Open Space Hierarchy:** VARIOUS

**Open Space Quality:** Not Applicable

Actions	Priority	Indicative Cost Bracket	Partners	Resources
115.1 Ensure adequate provision of basic infrastructure to new reserves including paths, water take-off points and power supply.	High	Major	Property Developers Murray Darling Basin NRM Board	External consultancies Funding: External sources
115.2 Develop a district level sporting reserve to cater for the additional population growth. The reserve should cater for soccer, Australian Rules football and cricket. Outdoor community multi-use sports courts should also be provided. Refer Volume II Sport and Recreation Strategy for further details (Strategies 2, 6, 13 & 22).	High	Major	Property Developers	Internal staff time External consultancies Funding: Council and External sources

Table 55: OSR115 Gifford Hill Recreation Areas