

CONNECTED COMMUNITIES



BUILDING A BRIGHT FUTURE

Council is investing at an unprecedented rate in major infrastructure projects to future proof the Rural City of Murray Bridge.

Page 3

Photo courtesy of Spry Civil Constuction

INVITING TOWN ENTRANCES

Adelaide and Swanport Road transformations invite travellers in

Page 7



STURT RESERVE MASTER PLAN

Opening up and bringing to life our riverfront community parklands

Page 4



MESSAGE FROM MAYOR BRENTON LEWIS

WELCOME to the Summer edition of our community newsletter: **Connected Communities.**

This past year we have faced some unique and unprecedented challenges due to the COVID-19 pandemic.

Having survived drought, bushfire and other calamities over the years our strong community is no stranger to adversity and together we have risen to the challenge of banding together to protect the most vulnerable.

The Rural City of Murray Bridge is a proud and resilient community.

As Mayor, it has been gratifying to watch Council continue to deliver in our neighbourhoods throughout the pandemic.

Elected Members and staff were able to support people in our communities who were struggling, whether through rates assistance or providing connections with other services more suited to individual needs.

Our own dedicated essential staff kept things running smoothly during restrictions and I have to make a special mention of our Lerwin staff who provided the very best of care in difficult circumstances to ensure our most vulnerable citizens were kept safe.

Strong financial planning in recent years has allowed this Council to weather the storm and to continue to deliver a strong and ambitious infrastructure program to keep our Rural City growing and ready for better days.

Along with the rest of our community I am most looking forward to the long awaited development of Sturt Reserve, as many years of planning now begin to unfold and make the



most of our riverfront playground.

With restrictions lifting as I write this I look forward with hope and excitement to the year ahead and all the opportunities that lay before us.

I wish everyone in our communities the very best of health and good fortune.

Remember to stay vigilant and follow all health directives to keep our communities safe.



If you would like to help save trees, register your interest to receive an electronic version of this newsletter and other Council communications via your inbox at letstalk.murraybridge.sa.gov.au/register

CONTACT COUNCIL

Phone	Customer Service on 8539 1100
Email	council@murraybridge.sa.gov.au
Mail	PO Box 421 Murray Bridge SA 5253
Website	murraybridge.sa.gov.au makeityours.sa.gov.au letstalk.murraybridge.sa.gov.au
YouTube	Rural City of Murray Bridge
Facebook	@ruralcityofmurraybridge @mblibrary @murraybridgeswimmingcentre @townhallmurraybridge @murraybridgeregionalgallery @sixthstreethandmade @thestationau @murraybridgeyouthcouncil
Instagram	@ruralcityofmurraybridge @murraybridgeregionalgallery @the_station_mb



BUILDING A BRIGHTER TOMORROW

MASSIVE opportunity is being realised in Murray Bridge as Council rides the wave to deliver infrastructure needed to support a vibrant and growing South Australian Rural City.

Long term planning behind the scenes to deliver significant projects to stimulate growth, investment and boost Murray Bridge, are now reaching the critical point where delivery can begin and Council has taken the challenge head on.

An enormous amount of infrastructure investment is being rolled out this year in Murray Bridge, on a scale unprecedented for the Rural City.

Funding, incorporating State, Federal and private partnerships, is being ploughed into infrastructure to support the growth of our emerging Rural City and regional centre.

Council's infrastructure work program this year was three times the usual size and Council has taken on extra staff during the past 12 months to keep up with the workload and ensure projects are delivered on time and within budget.

Our current \$42 million works program investing in local infrastructure includes \$34 million for new infrastructure.

Council's ongoing commitment to financial sustainability means we can deliver significant projects for the community using a planned operating surplus under-pinned by a modest increase in rates.

Our open spaces are blooming, roads, footpaths and asset renewal are receiving attention, our town entrances are being transformed, access to the river is being opened up and our Rural City is changing.

The face of our most treasured community landmark Sturt

Reserve is literally changing – see back page.

After a year of uncertainty as we worked our way through the COVID-19 pandemic, it is reassuring to know essential services like Local Government have been working steadily away behind the scenes to build resilience and infrastructure to support a brighter future.

Murray Bridge has been bucking the national trend since coronavirus restrictions first came in, and fielding one of the highest enquiry rates in South Australia by first home buyers and investors.

The idea of embracing country living is increasingly turning eyes towards growing regional centres like ours.

Affordability and lifestyle are the main attractions for most people and Murray Bridge clearly has both in spades.

Rental properties are in high demand and if you are lucky enough to find one they are snapped up quickly.

THERE HAS NEVER BEEN A BETTER TIME TO INVEST OR MAKE A HOME IN THE REGION.

New housing developments such as 'Newbridge' and other infrastructure investment in the Rural City are creating the perfect environment to support growth.

Murray Bridge has never looked better and the rest of the world is now catching on to what we've known all along.

Murray Bridge is a great place to visit, invest in, work, play, make a home and raise a family.

To view the latest updates on infrastructure projects visit murraybridge.sa.gov.au/infrastructure

Murray Bridge - Make It Yours.

THE ROUND HOUSE



THE ROUND House has quietly undergone a significant transformation while closed to the public during the COVID-19 pandemic.

Visitors can enjoy an authentic immersive experience as they step through the front door and are transported back in time to the 1800s in Murray Bridge.

Try on the clothes of the era and retrace the footsteps of those who have gone before.

Choose a guided or self-guided tour, and a range of family-friendly activities where you can see, touch and hear what life was like in Victorian-era Australia.

A major refresh and curation of the historic site has been undertaken to honour one of the town's oldest surviving buildings.

Displays have been transformed with a re-imagining the way stories of the Round House are told through innovative and creative interpretation.

Extensive restoration of the building has been undertaken, and the newly re-polished timber floors and attention to detail allow the beauty of the unique heritage architecture to shine.

The Round House is a significant tourism attraction for Murray Bridge, and there is enormous potential to grow visitation by capitalising on connection to the riverfront, connecting precincts and showcasing cultural history and heritage.

Families with a connection with the Round House and/or the bridge are invited to share their anecdotes, memories and stories, as part of Council's oral history project.

Contact the Round House to help piece together the history of the building and the bridge at murraybridge.sa.gov.au/roundhouse

COMMUNITY PROJECTS

BARBECUE

LONG Island Reserve will get a new barbecue this year.

BRIDGE STREET BEAUTIFICATION

AN INVITING atmosphere has been created on Bridge and Seventh Streets with creative landscaping featuring native plants, street furniture and paving.

BUS SHELTERS

NEW bus shelters have been built on Owl Drive and Duldig Avenue.

CARPARK UPGRADES

DESIGN work is underway to address stormwater issues and propose sealing Johnstone Park and LeMessurier Oval carparks - subject to future funding approval. Entrances have been upgraded at Monarto Clay Target Club and Jervois Combined Sports Club.

MURRAY BRIDGE DARTS CLUB

COUNCIL shared costs with the Club to install a new ramp for access for people with a disability.

NEW PLAYGROUND

A BRAND new playground will be going in at Long Island Reserve early this year.

PICNIC SHELTERS

CONTEMPORARY new picnic shelters have been built at Long Island, Swanport, Thiele and Woodlane Reserves.

PUBLIC TOILETS

FRESH new public toilets are now available at Homburg Park, Monarto Recreation Shelter, Thiele Reserve and Woodlane Reserve.

ROTARY JUBILEE PARK

ARTWORK that doubles as seating, entitled 'Torus', designed by Christine Cholewa in collaboration with local high school students, will feature at Rotary Jubilee Park along with landscaping and other new touches.

STREET TREE PLANTING

COUNCIL aims to plant 300 new street trees every year. Benefits include increased prettier streets, cooling, carbon sequestration, oxygen production, habitat and increased property values. This year trees have been planted on Darling and Donald Avenues, Grose and Thomas Streets, Raymond and Roper Roads, and Willowbark Crescent, with more to go.

STRATEGIC PLAN

NEW videos showcasing Murray Bridge as a growing South Australian regional city with an exciting future have been released, sharing Council's plans for the Rural City over the next four years at www.youtube.com/channel/UCAXMI8LxDPk5jmjjPN8dIUg

WALKING TRAILS

THE MURRAY Coorong Trail is taking shape in Murray Bridge with a new section now formalised between Sturt and Long Island Reserves, and trail markers to go in early this year between Sturt and Tumbella Reserve.

ADELAIDE ROAD



EXITING the freeway and travelling into the heart of Murray Bridge via Adelaide Road Linear Park now gives an introduction to life in our river town that befits the experience.

The lush green leafy avenue has transformed Murray Bridge's main entrance in two years from a dry, dusty stretch into the creatively landscaped parkland that heralds the Murraylands oasis and sophisticated regional centre we have become.

We watched the first four stages of the project unfold over time as funding and manpower became available and the project is now nearing completion with stages five and six, between Cromwell and Maurice Roads, well underway.

Bike riders and joggers will enjoy a three metre wide shared path winding all the way from Zerna Avenue to Maurice Road featuring seating, shade structures, barbecues, open grassed play spaces, art and beautifully curated and irrigated scenery.

Recycled local stormwater run off is stored at Gifford Hill and pumped back via irrigation infrastructure to keep the newly created and self-sustaining avenue cool and green.

The ingenious water-saving design both protects our most precious river resource and keeps maintenance costs to a minimum for residents.

Council is partnering with Tyndale Christian School to involve local kids in enlivening a section of parkland near the school entrance to help create meaningful community connections.

Picnic shelters and water fountains will be installed by April.

SWANPORT ROAD



TOWN entrance transformation is also taking shape along the Swanport Road freeway exit.

Unique outdoor art doubling as SA Water Pump Station 33 starts the adventure, opposite the Swanport Hotel, as part of a Drought Funding strategic alliance with Council.

The building itself functions as a piece of public art developed by Aboriginal architect and artist Paul Herzich to blend with landscaping to reflect Ngarrindjeri country, and tell a local story of the river and wildlife.

Interpretive garden beds fan out in the shape of bird wings and artwork includes mosaic swan eggs to help illustrate a story of connection between the built environment and nature – interpretive signage onsite explains in more detail.

A shared footpath stretching from the pump station down Swanport Road, creates connection and guides adventurers through to the heart of our community.

Infrastructure investment has included kerbing, road realignment and sealing, a traffic island and more to create an engaging space enticing people to enjoy a more walkable neighbourhood.

Water sensitive urban design channels stormwater run off from the road to irrigate carefully chosen flora - which includes local endangered species.

Creative landscaping features a variety of textures and colours to showcase native plants and trees, which has transformed the previously ordinary carriageway into something special, inviting travellers to journey inwards.

If you haven't explored it yet, put this walk on your to do list and experience the difference first hand.

Murray Bridge is changing and we think you will like it.

SWIMMING CENTRE



BE COOL at the pool this summer and keep the kids entertained in the water.

The Murray Bridge Swimming Centre features a 50 metre pool with accessible ramp, shaded medium and toddlers' sized pools, lush green lawns and free barbecues.

Not to mention a Water Play Park with five waterslides for children and toddler's water features, as well as a 48 metre Supaslide for the older crowd.

\$2.8million worth of renovation work and upgrades were rolled out over winter in Stage One of the long term Swimming Centre Masterplan.

AUSTRALIA DAY

LOCAL heroes who've made a positive and significant difference in our communities will take centre stage at Australia Day celebrations in January.

Australia Day Award winners will be announced at a special ceremony to be held from 7am Tuesday 26 January, 2021 at Sturt Reserve. Categories include Community Initiative, Community Event, Sports Person, Young Sports Person, Volunteer, Citizen and Young Citizen of the year.

We will also welcome Murray Bridge's newest citizens as they take the citizenship pledge.

Celebrations will continue with an Australia Day pool party at the Murray Bridge Swimming Centre afterwards.

LIFE AT LERWIN



DON enjoys his weekly treat of fish and chips while watching a footy game with son Ian in the bright surrounds of his freshly upgraded Lerwin home.

The cherished father/son tradition was put on hold for a short while due to COVID restrictions affecting South Australian nursing homes late last year, but it didn't stop the multimillion dollar expansion and refurbishment of the facility.

The Lerwin Upgrade and Expansion project included 20 new rooms, 15 refurbished rooms, upgraded bathrooms, lounge spaces and dining areas, along with a stylish modern courtyard for residents to enjoy fresh air and sunshine.

The massive undertaking improves access to residential care in Murray Bridge and ensures modern, resident centred support is there for local people now and into the future.

Don Brown spent most of his working life farming in Callington and having a community supported and Council owned facility nearby for aged care means he can be supported to stay close to family and friends.

Now that restrictions are lifting and visitors are allowed once again, Don is looking forward to a piece of garfish.

"Nothing says summer better than fish and chips and a bit of cricket on the telly with a mate," he said.

The Lerwin Residential Aged Care facility is owned and operated by The Rural City of Murray Bridge and has been serving the local community for more than 30 years, providing 24 hour support dedicated team offering all care levels including dementia specific support.

For more information on Lerwin and visitor requirements visit murraybridge.sa.gov.au/lerwin

FARMGATE ACCESS



MAKING it easier for farmers to get their produce out the gate and to market is the driving force behind significant investment in our Secondary Freight Network.

Moving goods in a convenient and reliable fashion is an important part of any successful farming or primary producing business in today's world.

Large trucks needed to move produce can't travel on bitumised roads made only for light vehicles without damaging the surface, and unsealed dirt roads are equally unsuitable for regular heavy traffic.

The Rural City of Murray Bridge has been working hard to create a Secondary Freight Route to solve the problem and work has already begun on upgrading sections of Jarvis, Pope and Hoadville Roads, thanks to a recent injection of almost \$1 million in Federal stimulus funding.

The entire Secondary Freight Network Expansion project will address \$11.3 million worth of upgrades, over time, to multiple road sections in the region to allow reliable access and transport from farm to market.

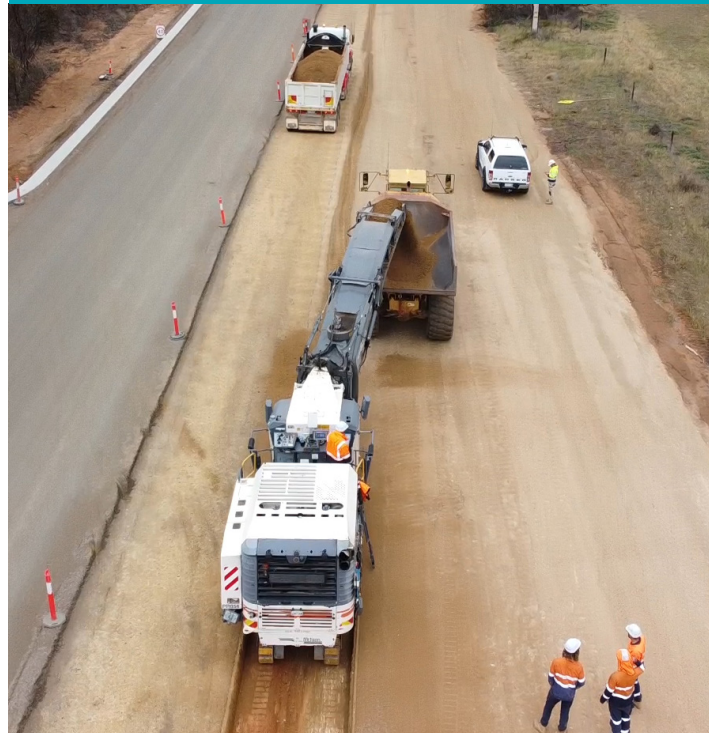
Council's next priority will be the construction of Maurice Road between Old Princes Highway and the existing sealed section which currently terminates at Boral Quarry and Mobilong Prison.

Constructing and sealing this part of the road will provide an alternative route from Monarto to the northern part of Murray Bridge, and link directly to the existing over dimensional vehicle / B-Double bypass route at Cypress Terrace.

This will create a reliable supply route to the Thomas Food International Facility, among others.

This is one of the many ways Council is planning for and building resilience for a growing community and local economy.

THOMAS FOODS ROAD



MORE than 2,000 local jobs will be created by the new Thomas Foods International (TFI) meat processing plant in Murray Bridge once it's up and running, after Council forged the access road to help make it happen.

A further 4,500 indirect jobs will eventually flow on from the multimillion dollar facility rebuild and Council is doing all it can to support local investment and job creation.

The Rural City of Murray Bridge oversaw the tender and construction of the 2.2km link road between Mannum Road and the new TFI facility.

The project included acceleration and deceleration lanes on Mannum Road to accommodate increased traffic, stormwater, earthworks and lighting.

The infrastructure is vital to enable transportation and access for the rebuild after the original site was destroyed by fire two years ago, devastating the local economy and workforce.

The six month long road construction began in July and now access is established, operations can focus on the rebuild eight kilometres outside of the town centre.

TFI is one of Murray Bridge's largest employers and is investing several hundred million dollars into the new state of the art processing facility.

The TFI flagship project is expected to include the latest advancements in technology, efficiency, environmental sustainability, animal welfare and workplace safety.

The plant and its capacity will be built in a staged fashion with beef processing facilities to be established first.

The TFI access road was created in partnership with the Department of Planning, Transport and Infrastructure.

The project was jointly funded by the Federal and South Australian Governments.

RIVERFRONT RENOVATIONS REVEALED



THE STURT RESERVE MASTER PLAN IS ROLLING OUT AND TRANSFORMING THE RIVER FRONT SUMMER PLAYGROUND

EXTRA sparkle is being added to Murray Bridge's jewel in the crown, Sturt Reserve, as the highly anticipated Master Plan making the most of our most precious resource and creating linkages with the town gets underway.

Already known as a premier playground and events space on the river for locals and visitors, Sturt Reserve is a well-loved summer hot spot set to become bigger and better than ever as the long term vision starts to unfold.

Years of planning and preparation are now paying off as the Sturt Reserve Master Plan begins to materialise with works being implemented on the ground as part of Council's mammoth infrastructure program.

The \$34 million overall Master Plan is an ambitious undertaking that needs to be broken up into manageable pieces of work and rolled out over successive years as funding becomes available.

Many years of careful research and consultation with the community have gone into development of a cohesive plan to open up the riverfront and connect people with our most beautiful and valuable resource in an achievable and sustainable way.

Council invested \$3million in Stage One of the Recreation Precinct transformation to enliven the look, feel and usability of our most popular riverfront gathering spot.

The Murray Bridge Regional Rowing Centre is a fit for purpose joint project between Council and the Murray Bridge Rowing Club (MBRC) to honour the unofficial 'home of South Australian Rowing'.

The dual purpose centre is available for function hire and also houses the actual Rowing Club.

A new pontoon for rowing, swimming and fishing sits just

outside while the old wharf outside The Club was removed and stabilisation works shored up the riverbank.

A three metre wide shared path along the foreshore, landscaping, CCTV along with a striking and poignant public art installation memorialising the Murray Cods and their place in local history complete the picture.

The Murray Cods Memorial is a creative installation incorporating stainless steel oars and granite stone, with plinths showcasing details about individual rowers and their story.

A rowing regatta scheduled for late January 2021 will coincide with the official opening of the Rowing Centre and the unveiling of the Cods memorial.

A separate imposing sculpted structure serves as a 'Trail Head' with information about the various walking and cycling trails feeding out from Sturt Reserve.

"STURT RESERVE IS A MAGNIFICENT SPACE AND IT'S ABOUT TO GET EVEN BETTER" - CEO MICHAEL SEDGMAN

Council is also upgrading and replacing existing public toilets in the area.

Stages Two and Three of the Recreation Precinct will roll out this year and include continuation of the dual use path to provide further linkages throughout the reserve and a new large shelter incorporating outdoor furniture and barbecues for picnics.

Other precincts identified for future development in the Sturt Reserve Master Plan include the Tourism/History Precinct (Murray Bridge War Memorial end), Play Precinct (downstream from the Rowing Centre) and Accommodation/Events Precinct (set back from the river).

View the Sturt Reserve Master Plan and what's in store at Council's website www.murraybridge.sa.gov.au