

Tailor
approaches to
our own
community's
needs and
resources

Lead
Action
Together

A Safe,
Healthy
and Active
Community

Adopt a
whole of
community
approach

Local organisations,
services and community
working together to
improve the safety and
wellbeing of our
community.

2018-2024

COMMUNITY SAFETY PLAN

**MURRAY
BRIDGE**
THRIVING COMMUNITIES



The Rural City of
**MURRAY
BRIDGE**

Bridge to Opportunity

Proud Safe Progressive



Endorsed by Council on 8 April 2019

As a significant contributor to health and wellbeing, community safety is an integral component of a liveable community and is factored into a number of key Council policies and strategies.

This Community Safety Plan relates to the Rural City of Murray Bridge Community Plan 2016-2032 through the following themes:

Connected Communities



- » *Collaborate to achieve outcomes*
- » *Engaged and well-informed communities*
- » *Build community capacity and support*

Great People and Lifestyle



- » *A safe, healthy and active community*
- » *Plan liveable, connected and accessible places*
- » *Our history, diversity and culture is treasured*

Valued Environment



- » *Great places for people*
- » *Activate the river*
- » *Clean environmentally sustainable communities*

NGARRINDJERI ACKNOWLEDGEMENT

We acknowledge the Ngarrindjeri people as the traditional owners of this land on which we meet and work. We respect and acknowledge their spiritual connection as the custodians of this land and that their cultural heritage beliefs are still important to the living people today. We recognise the living culture and combined energies of the Ngarrindjeri people, our global pioneers and community members today, for their unique contribution to the life of our region.



The Ngarrindjeri Mosaic Project located at the Local Government Centre is an imposing mosaic artwork with the design based on the Ngarrindjeri creation story of Ngurunderi, the great ancestral creator who chased pondi (Murray Cod) downstream and forged the path of the mighty Murray River. It is the oldest known story of the Murray River and teaches about Ngarrindjeri culture, the environment and spiritual beliefs.

MESSAGE FROM

THE MURRAY BRIDGE SAFE TASKFORCE

The Murray Bridge SAFE Taskforce is proud to endorse the Rural City of Murray Bridge Community Safety Plan 2018-2024.

The Murray Bridge SAFE Taskforce was established in 2015 to identify and respond to local safety and crime issues. It brings together a cross-section of community members from a variety of organisations and backgrounds, all of whom have a key role in ensuring that the Rural City of Murray Bridge remains a safe, vibrant and thriving community.

Health and safety are linked – our perceptions of safety influence our sense of wellbeing and our connection to our community. When people feel safe they are more likely to be actively involved in community life, with greater capacity to engage in social and recreational activities, education, and employment.

Through extensive consultation and collaboration with the local community, agencies and services, the Murray Bridge SAFE Taskforce has identified seven key safety and wellbeing priorities for the Rural City of Murray Bridge. These key priorities provide the evidence base behind the development of the Community Safety Plan.

In conjunction with the Community Safety Plan, a detailed Action Plan has been developed to respond to the key priority areas, and is based on work currently being undertaken and opportunities for future partnerships and collaboration. The Action Plan is informed by Best Practice in community safety and wellbeing, and strategies are specifically tailored to our local context.



Key Safety and Wellbeing Priorities
2018-2024

PURPOSE OF THE PLAN

The purpose of the Community Safety Plan 2018-2024 is to provide a clear outline of how the Rural City of Murray Bridge can work together with the community to address the complex range of crime and safety issues affecting our community.

The Community Safety Plan aims to support a Community Based Approach to improve community safety and wellbeing, by encouraging community members to become actively involved in the shared responsibility of the safety and welfare of our community. The Rural City of Murray Bridge recognises that the underlying causes of crime are complex and varied, and so it is committed to working together with the community on a broad range of issues in a multi-faceted and holistic approach, with dynamic and flexible programs that evolve in response to local conditions.

The Rural City of Murray Bridge is Progressive Proactive Creative Resourceful

The Community Safety Plan delivers a sustainable long-term progressive approach to Community Safety, by strengthening communities and increasing opportunities for people to engage in legitimate activities. Early intervention and primary prevention initiatives provide a strong focus on education and influencing future generations, by providing opportunities that guide and support children and young people and their families at key transition points in life. Educational activities aim to not only transfer knowledge and skills, but also aim to influence attitudes and behaviours, ultimately strengthening people's resilience and ability to manage their own wellbeing.

Above all, the Community Safety Plan's central theme of shared responsibility encourages the community to become 'Good Neighbours' and recognise that all of us are responsible for our own and each other's safety and wellbeing.

COMMUNITY SNAPSHOT

A Rural City of Murray Bridge Community Satisfaction Survey conducted in 2017 showed that the key issues of most concern to the community included drug use, crime, lack of entertainment for young people, and a lack of jobs.

Respondents felt that the Rural City of Murray Bridge should focus on increasing youth engagement programs and activities, and provide more security measures, such as CCTV cameras.

When questioned about the top things most valued about living in the Rural City of Murray Bridge, one of the most common answers was “a strong sense of community”, with residents also indicating that they would like Council to provide more opportunities for community engagement through greater communication, consultation and information. This strong desire for increased community engagement supports a Community Based Approach to safety and wellbeing in the Rural City of Murray Bridge.

**1, 832 km² of
Council area**

8, 869 Dwellings

21, 486 Population

4.6% Indigenous

**15 % Born
Overseas**

30% Aged Under 25

HOW DOES A COMMUNITY BASED APPROACH WORK?

A Community Based Approach is guided by the principles of Community Development to address social and community issues. It aims to create change at a community or neighbourhood level, using a holistic approach grounded in principles of empowerment, human rights, inclusion, social justice, and collective action. Council values community knowledge and wisdom, and acknowledges that community members are experts in their own lives and communities. As such, Council's approach will be informed by the community's collective wisdom and experience.

Although growth and development within the Rural City of Murray Bridge continues to expand, our residents still value a strong sense of community, and would like more opportunities to be involved in matters that concern their community. There are many ways that the community can play an active role in a Community Based Approach to safety and wellbeing.

Join a community group

Get Out and About

Participate in safety and wellbeing programs and activities

Attend safety and wellbeing forums

Have Your Say!

Enjoy Nature and Parks

Enjoy our Play Spaces

There has been strong local support of the Good Neighbour movement, where residents are actively making efforts to connect with their local community.

BE A GOOD NEIGHBOUR – BE A SAFE NEIGHBOUR

Getting to know your neighbours will not only will enhance your social connections, it may also mean that your neighbours keep an eye on your property when you are not present, and can report any suspicious behaviour to the police. Good neighbours take responsibility for the safety and wellbeing of their neighbours.

CRIME STOPPERS 1800 333 000

If you see something, say something



Police Attendance 131444

Police Emergency 000

We can help the Police to do their job, by doing OUR job in community safety

Local organisations and services are currently working together in all of the key priority areas affecting our community. A Community Based Approach allows for increased collaboration between organisations and services, greater community engagement, and greater access to resources and service improvements, ultimately enabling increased effectiveness in addressing our local community safety and wellbeing issues.

Council is responsible for meeting a diverse range of safety, health and wellbeing needs in our community, and provides a central link in connecting together the diverse sectors of the community. Council actively promotes and develops strategies which support a united community approach to enhance community safety and wellbeing.

Council's approach to community safety and wellbeing will encompass the following key themes, around which the Community Safety Plan is based:

Partnership and Collaboration

Community Capacity Building and Support

Community Engagement and Communication

Harm Minimisation

Safer Homes and Public Spaces

PARTNERSHIP AND COLLABORATION

Goal:

To partner and collaborate with the community to deliver safety and wellbeing strategies tailored to our local context.

Achieved by:

- Strengthening existing, and exploring new community safety and wellbeing partnerships, which enable shared responsibility, decision making and a collaborative approach to addressing community safety and wellbeing issues.
- Providing opportunities for the broader community to share responsibility and take collective action for improving community safety and wellbeing.

**Links to the Rural City of Murray Bridge
Community Plan 2016-2032**



CONNECTED COMMUNITIITES

*Collaborate to achieve
outcomes*

*Engaged and well-informed
communities*

*Build community capacity and
support*

COMMUNITY CAPACITY BUILDING AND SUPPORT

Goal:

To increase community resilience in response to safety and wellbeing issues

Achieved by:

- Supporting community based safety and wellbeing programs which build resilience and capacity in the community, particularly amongst vulnerable communities (children, elderly, CALD, disability)
- Supporting community development projects and events which have a safety and wellbeing focus, through Council's Community Grants Program.
- Providing opportunities to foster a strong sense of community connectedness, where all community members are equally valued and respected, so that all members feel safe and welcome, creating a safer and healthier community.

Links to the Rural City of Murray Bridge Community Plan 2016-2032



CONNECTED COMMUNITIES

Build community capacity and support

Engaged and well-informed communities



GREAT PEOPLE AND LIFESTYLES

A safe, healthy and active community

Plan liveable, connected and accessible places

Our history, diversity, and culture is treasured

COMMUNITY ENGAGEMENT AND COMMUNICATION

Goal:

To increase community awareness and understanding of safety and wellbeing issues

Achieved by:

- Conveying community safety and wellbeing messages, and promoting safety and wellbeing campaigns, through a variety of media
- Delivering Primary Prevention initiatives through education and awareness

Links to the Rural City of Murray
Bridge Community Plan 2016-2032



CONNECTED COMMUNITIES

Engaged and well-informed communities

HARM MINIMISATION

Goal:

To limit the harm that is done to both individuals and the community, resulting from the use of alcohol and other drugs.

Achieved by:

- Providing Sharps Disposal service
- RCMB Alcohol Management Plan – Liquor Accord and Dry Zones
- Supporting opportunities to educate the community about illicit drugs
- Providing opportunities to support families and community members affected by other people's drug and alcohol use.

Links to the Rural City of Murray
Bridge Community Plan 2016-2032



GREAT PEOPLE AND LIFESTYLES

*A safe, healthy and active
community*

SAFER HOMES AND PUBLIC SPACES

Goal:

To improve the safety and security of our built and natural surroundings.

Achieved by:

- Continued support of Neighbourhood Watch, Business Watch, and School Watch programs and activities
- Application of Crime Prevention Through Environmental Design (CPTED) principles when developing public spaces and facilities
- Activation of key public spaces, such as Sturt Reserve River front
- Installation and ongoing management of CCTV cameras

Links to the Rural City of Murray Bridge Community Plan 2016-2032



GREAT PEOPLE AND LIFESTYLES

A safe, healthy and connected community

Plan liveable, connected and accessible places



VALUED ENVIRONMENT

Great places for people

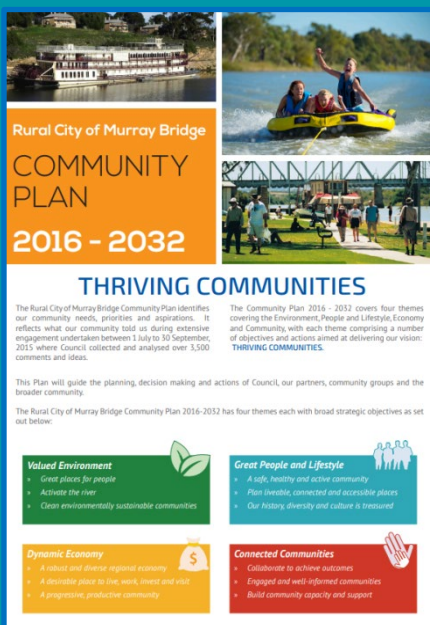
Activate the river

REPORTING AND REVIEW

Progress against the Community Safety Plan will be reported to the Council and community through an annual Activities Report submitted to the Community Advisory Committee.

A review of the Plan will be scheduled in 2024 in accordance with its final year of implementation.

REFERENCES



THE RURAL CITY OF MURRAY BRIDGE
2 Seventh Street
Murray Bridge SA 5253

e council@murraybridge.sa.gov.au
f facebook.com/ruralcityofmurraybridge
p 08 8539 1100
w www.murraybridge.sa.gov.au



Bridge to Opportunity

The Rural City of
**MURRAY
BRIDGE**