

GATEWAY SIGN IN SITU

SECTION 3 WAYFINDING FRAMEWORK



- TYPE G7 - GATEWAY SIGN - 4000H X 900W
- * Option for nighttime internal illumination
 - * all sign graphics and locations are indicative only



NB: ACKNOWLEDGEMENT OF THE NGARRINDJERI
ON SIGNS IS SUBJECT TO NRA APPROVAL..

VEHICLE DIRECTIONAL SIGN IN SITU

SECTION 3 WAYFINDING FRAMEWORK



TYPE D6 - VEHICLE DIRECTIONAL - 3500H X 800W

* all sign graphics and locations are indicative only



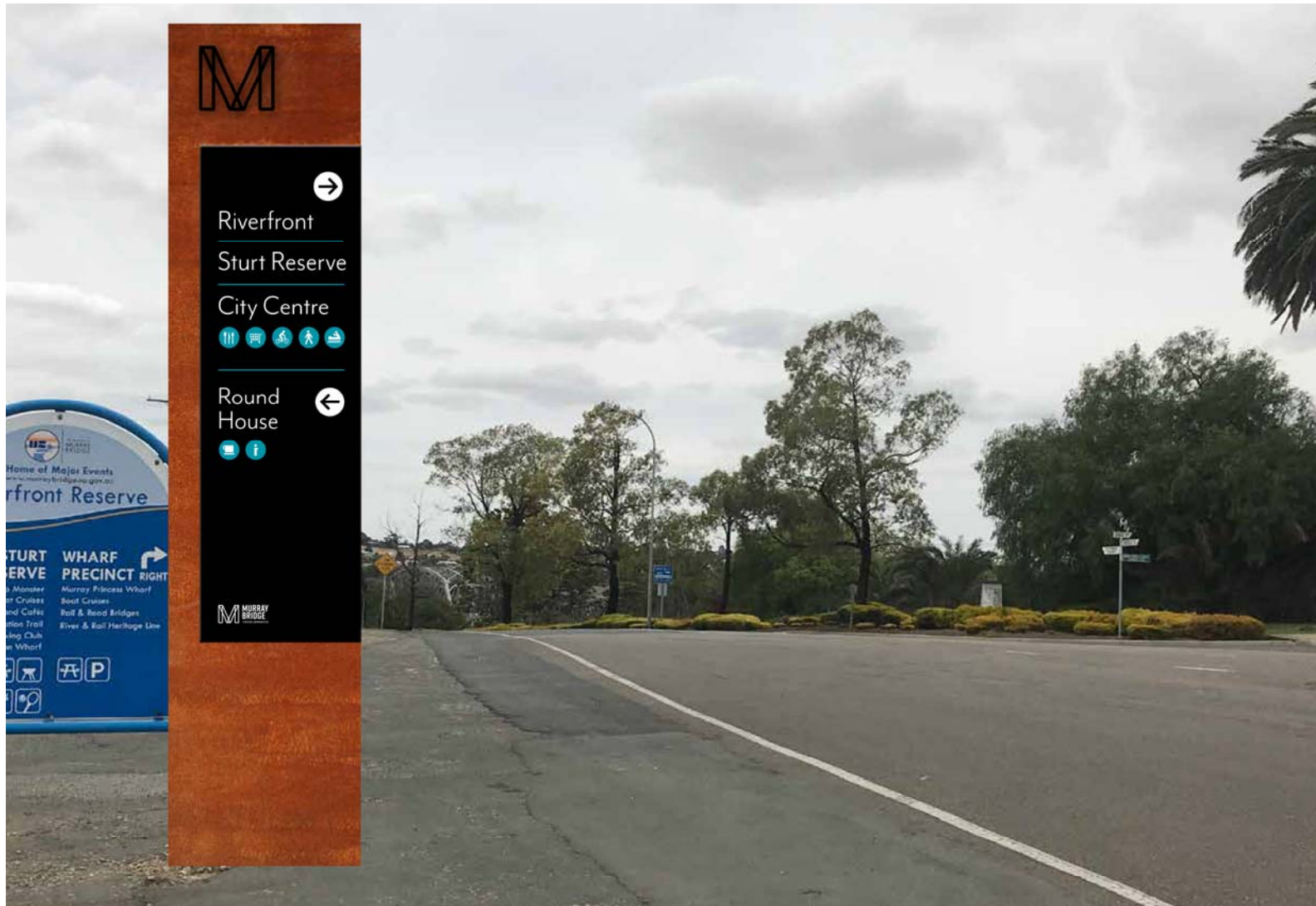
VEHICLE DIRECTIONAL SIGN IN SITU

SECTION 3 WAYFINDING FRAMEWORK



TYPE D6 - VEHICLE DIRECTIONAL - 3500H X 800W

* all sign graphics and locations are indicative only



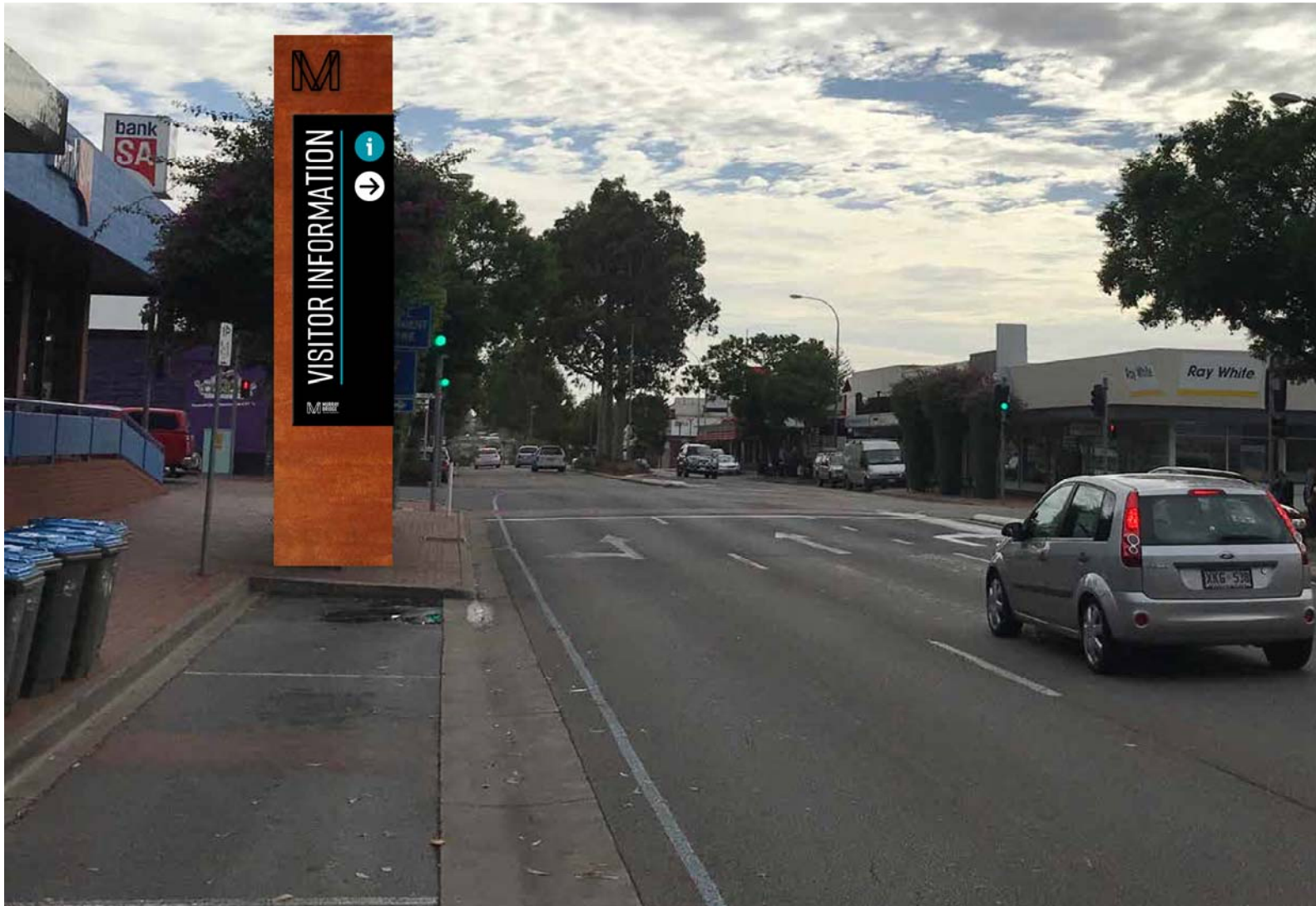
VEHICLE DIRECTIONAL SIGN IN SITU

SECTION 3 WAYFINDING FRAMEWORK



TYPE D6 - VEHICLE DIRECTIONAL - 3500H X 800W

* all sign graphics and locations are indicative only



VEHICLE DIRECTIONAL SIGN IN SITU

SECTION 3 WAYFINDING FRAMEWORK



TYPE D6 - VEHICLE DIRECTIONAL - 3500H X 800W

* all sign graphics and locations are indicative only



VEHICLE DIRECTIONAL SIGN IN SITU

SECTION 3 WAYFINDING FRAMEWORK



TYPE D6 - VEHICLE DIRECTIONAL - 3500H X 800W

* all sign graphics and locations are indicative only



PLACE NAME SIGN IN SITU

SECTION 3 WAYFINDING FRAMEWORK



TYPE P6 - PLACE NAME SIGN- 3500H X 800W

* all sign graphics and locations are indicative only



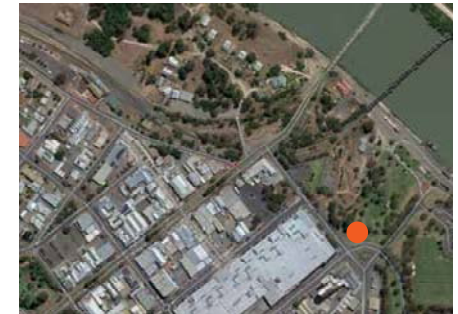
PLACE NAME SIGN CONCEPT A

SECTION 3 WAYFINDING FRAMEWORK



TYPE P7 - PLACE NAME SIGN

* Indicative only to be detailed in conjunction with landscape designers



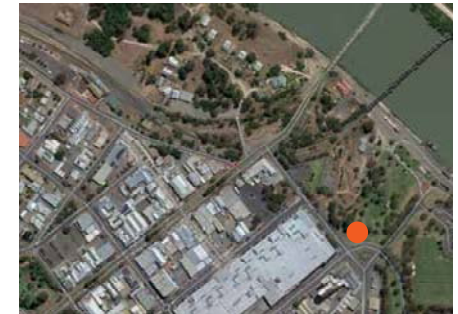
PLACE NAME SIGN CONCEPT B

SECTION 3 WAYFINDING FRAMEWORK



TYPE P7 - PLACE NAME SIGN

* Indicative only to be detailed in conjunction with landscape designers



PLACE NAME SIGN - PEDESTRIAN

SECTION 3 WAYFINDING FRAMEWORK



TYPE P3 - PLACE NAME SIGN - 2000H - OPTION A

* all sign graphics and locations are indicative only



TYPE P3 - PLACE NAME SIGN - 2000H - OPTION B



TYPE I3 - INTERPRETIVE SIGN - 2000H

* all sign graphics and locations are indicative only



PLACE NAME SIGN IN SITU

SECTION 3 WAYFINDING FRAMEWORK



TYPE P3 - PLACE NAME SIGN - 2000H

* all sign graphics and locations are indicative only



PEDESTRIAN DIRECTIONAL SIGN IN SITU

SECTION 3 WAYFINDING FRAMEWORK



TYPE D3 - DIRECTIONAL SIGN - 2000H

* all sign graphics and locations are indicative only



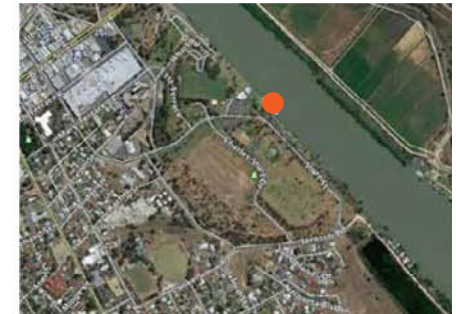
TRAIL HEAD INFORMATION BAY CONCEPT

SECTION 3 WAYFINDING FRAMEWORK



TYPE P3 AND I3 TRAIL HEAD SIGNS - 2000H

- * A shelter concept could be developed in conjunction with this suite
- * all sign graphics and locations are indicative only



TYPE P3 - PLACE-INTERPRETIVE SIGN - 2000H

* all sign graphics and locations are indicative only



PLACE AND INTERPRETIVE SIGN IN SITU

SECTION 3 WAYFINDING FRAMEWORK



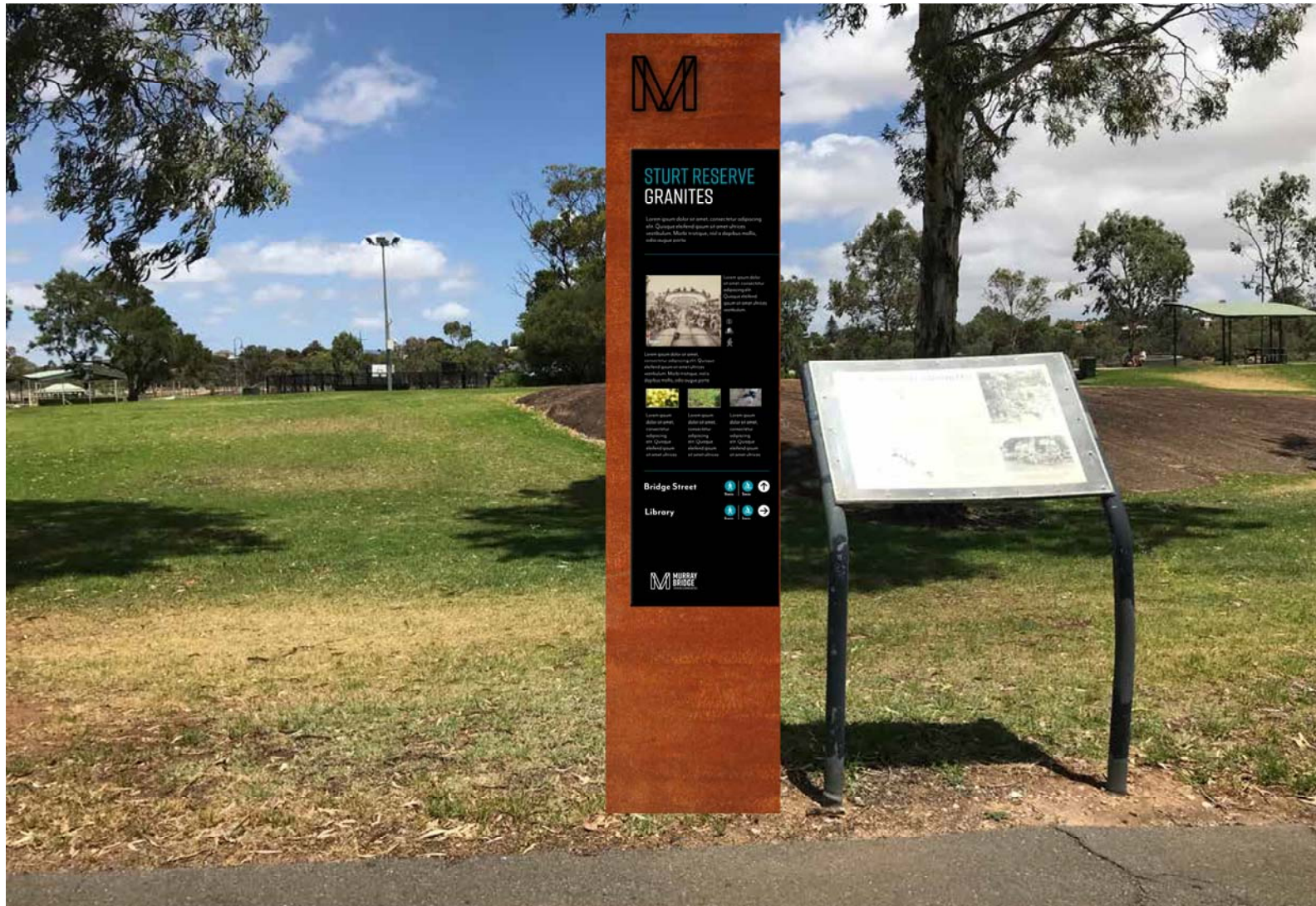
TYPE P3 - PLACE-INTERPRETIVE SIGN - 2000H

* all sign graphics and locations are indicative only



TYPE I3 - INTERPRETIVE SIGN - 2000H

* all sign graphics and locations are indicative only



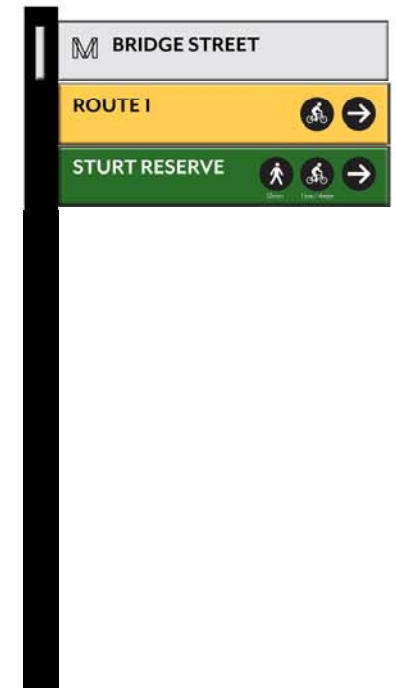
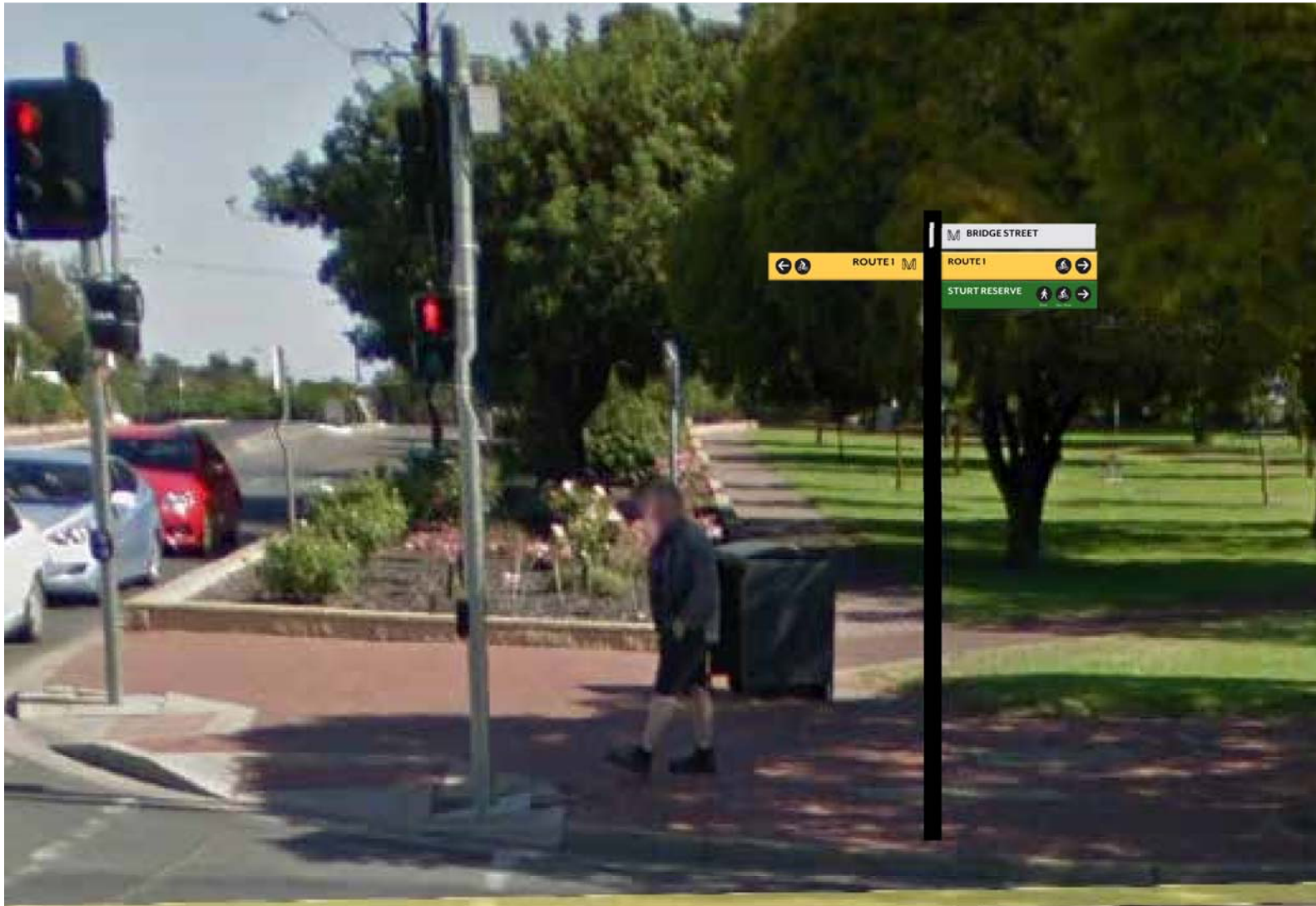
DIRECTIONAL SIGN POST AND BLADE IN SITU

SECTION 3 WAYFINDING FRAMEWORK



TYPE D8 - DIRECTIONAL SIGN POST AND BLADE

* all sign graphics and locations are indicative only



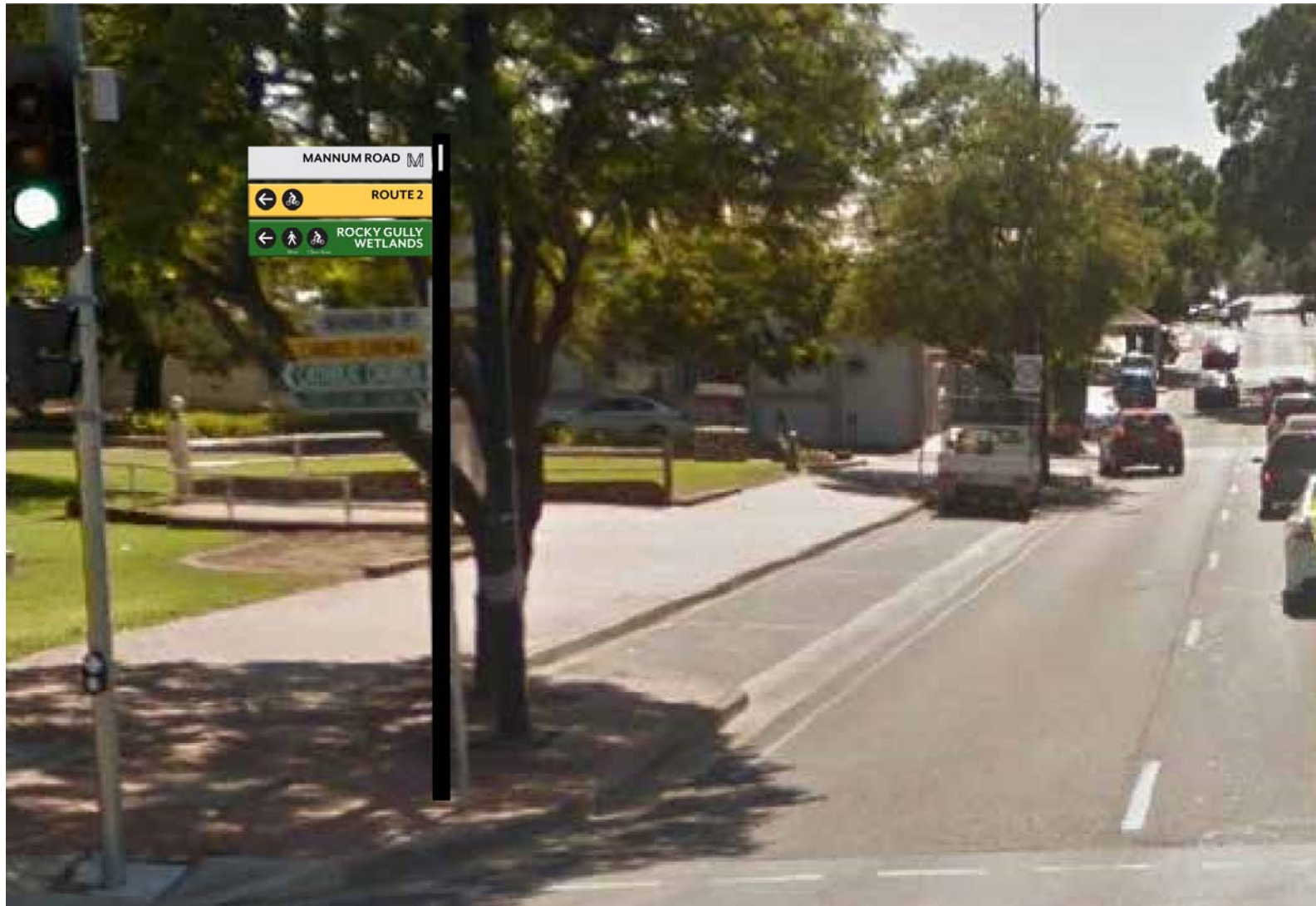
DIRECTIONAL SIGN POST AND BLADE IN SITU

SECTION 3 WAYFINDING FRAMEWORK



TYPE D8 - DIRECTIONAL SIGN POST AND BLADE

* all sign graphics and locations are indicative only



Walking and cycling time and distance information based on:
5km/hr walking = 0.08km/min or 1km/12min
15km/hr cycling = 0.25km/min or 1km/4min
Aprox distance from Mannum Rd / Adelaide Rd junction to Rocky Gully Wetlands = 1.5km
Cycle = 6min
Walk = 18min

WAYFINDING MAP DESIGN CONCEPT

SECTION 3 WAYFINDING FRAMEWORK



Proposed City of Murray Bridge wayfinding map incorporating brand colours and walking distance time circles that radiate out from the 'you are here' point.

Maps are an important part of an effective wayfinding signage solution. Map styles, colours, fonts and icons need to be consistent across all collateral, signage, website, printed brochures etc.

A less is more approach is important in the design and production of clear and easy to read maps.

* Design is indicative only, Map artwork needs to be developed in more detail and tailored to each specific site.

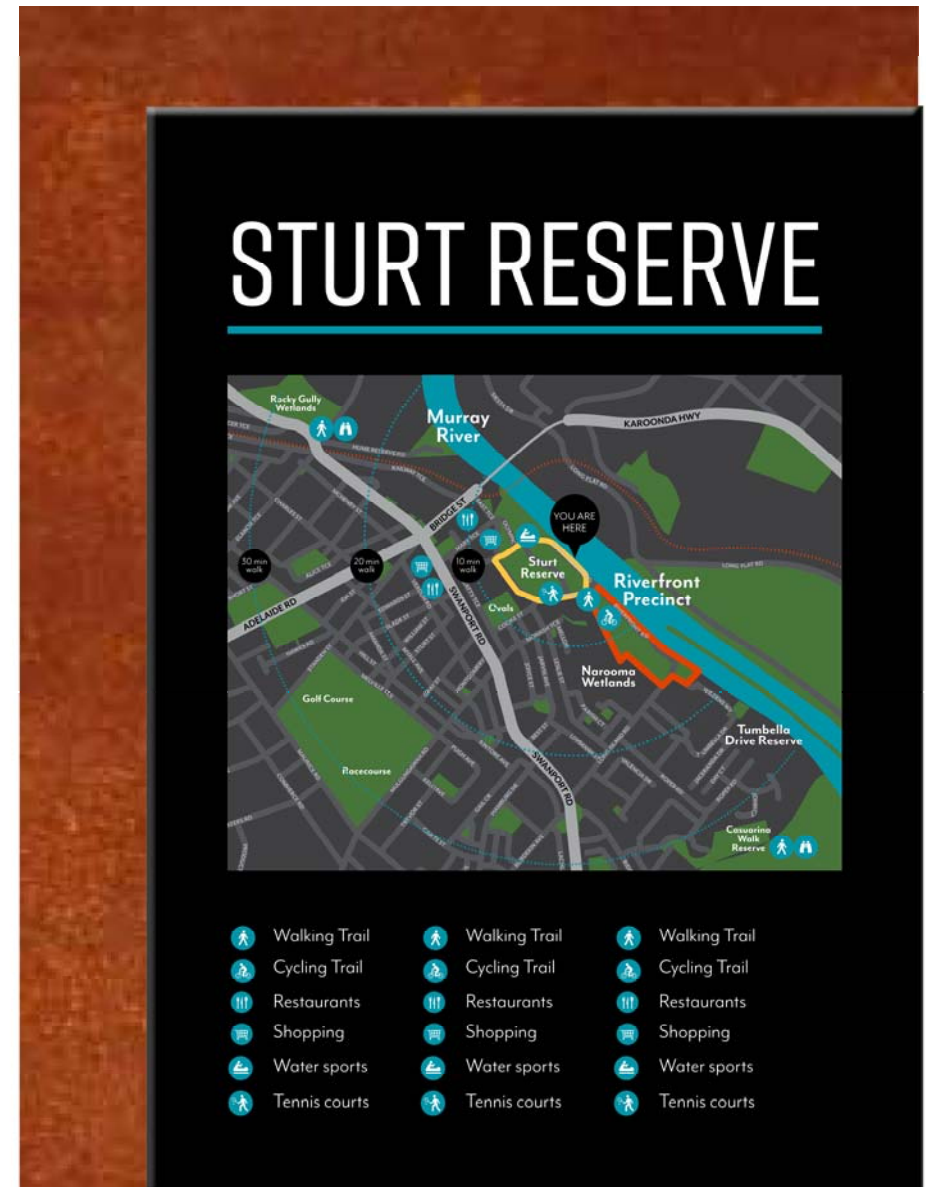


WAYFINDING MAP DESIGN CONCEPT

SECTION 3 WAYFINDING FRAMEWORK



Proposed City of Murray Bridge wayfinding map incorporating brand colours and walking distance time circles that radiate out from the 'you are here point'.



WAYFINDING ICON SET

SECTION 3 WAYFINDING FRAMEWORK



Proposed Rural City of Murray Bridge wayfinding icon set. These icons should be used consistently across all media, signage, print, website, brochures.

* Note more icon options may need to be developed on an as needs basis.

Services and facilities

Things you are encouraged to do

Things you are not allowed to do





SECTION 4

KEY SIGN TYPE LOCATIONS

RIVERFRONT SITE 3 - HUME RESERVE

SECTION 4 KEY SIGN LOCATIONS



*All sign locations are indicative only

- G8** GATEWAY ENTRY STATEMENT
- G7** GATEWAY SIGN 4000H
- D8** DIRECTIONAL POST + BLADE 3000H
- D7** VEHICLE DIRECTIONAL 4000H
- D6** VEHICLE DIRECTIONAL 3500H
- D5** VEHICLE DIRECTIONAL 3000H
- D4** PEDESTRIAN CYCLIST DIRECTIONAL 2500H
- D3** PEDESTRIAN CYCLIST DIRECTIONAL 2000H
- D2** PEDESTRIAN CYCLIST DIRECTIONAL 1500H
- D1** TRAIL MARKER 900H
- P7** PLACE NAME SIGN 4000H
- P6** PLACE NAME SIGN 3500H
- P5** PLACE NAME SIGN 3000H
- P4** PLACE NAME SIGN 2500H
- P3** PLACE NAME SIGN 2000H
- M4** MAP DIRECTORY SIGN 2500H
- M3** MAP DIRECTORY SIGN 2000H
- M2** MAP DIRECTORY SIGN 1500H
- I4** INTERPRETIVE SIGN 2500H
- I3** INTERPRETIVE SIGN 2000H
- I2** INTERPRETIVE SIGN 1500H



RIVERFRONT SITE 5 - THE ROUNDHOUSE

SECTION 4 KEY SIGN LOCATIONS



*All sign locations are indicative only

- G8** GATEWAY ENTRY STATEMENT
- G7** GATEWAY SIGN 4000H
- D8** DIRECTIONAL POST + BLADE 3000H
- D7** VEHICLE DIRECTIONAL 4000H
- D6** VEHICLE DIRECTIONAL 3500H
- D5** VEHICLE DIRECTIONAL 3000H
- D4** PEDESTRIAN CYCLIST DIRECTIONAL 2500H
- D3** PEDESTRIAN CYCLIST DIRECTIONAL 2000H
- D2** PEDESTRIAN CYCLIST DIRECTIONAL 1500H
- D1** TRAIL MARKER 900H
- P7** PLACE NAME SIGN 4000H
- P6** PLACE NAME SIGN 3500H
- P5** PLACE NAME SIGN 3000H
- P4** PLACE NAME SIGN 2500H
- P3** PLACE NAME SIGN 2000H
- M4** MAP DIRECTORY SIGN 2500H
- M3** MAP DIRECTORY SIGN 2000H
- M2** MAP DIRECTORY SIGN 1500H
- I4** INTERPRETIVE SIGN 2500H
- I3** INTERPRETIVE SIGN 2000H
- I2** INTERPRETIVE SIGN 1500H



RIVERFRONT SITE 6 - BRIDGE AND EAST

SECTION 4 KEY SIGN LOCATIONS



*All sign locations are indicative only

- G8** GATEWAY ENTRY STATEMENT
- G7** GATEWAY SIGN 4000H
- D8** DIRECTIONAL POST + BLADE 3000H
- D7** VEHICLE DIRECTIONAL 4000H
- D6** VEHICLE DIRECTIONAL 3500H
- D5** VEHICLE DIRECTIONAL 3000H
- D4** PEDESTRIAN CYCLIST DIRECTIONAL 2500H
- D3** PEDESTRIAN CYCLIST DIRECTIONAL 2000H
- D2** PEDESTRIAN CYCLIST DIRECTIONAL 1500H
- D1** TRAIL MARKER 900H
- P7** PLACE NAME SIGN 4000H
- P6** PLACE NAME SIGN 3500H
- P5** PLACE NAME SIGN 3000H
- P4** PLACE NAME SIGN 2500H
- P3** PLACE NAME SIGN 2000H
- M4** MAP DIRECTORY SIGN 2500H
- M3** MAP DIRECTORY SIGN 2000H
- M2** MAP DIRECTORY SIGN 1500H
- I4** INTERPRETIVE SIGN 2500H
- I3** INTERPRETIVE SIGN 2000H
- I2** INTERPRETIVE SIGN 1500H



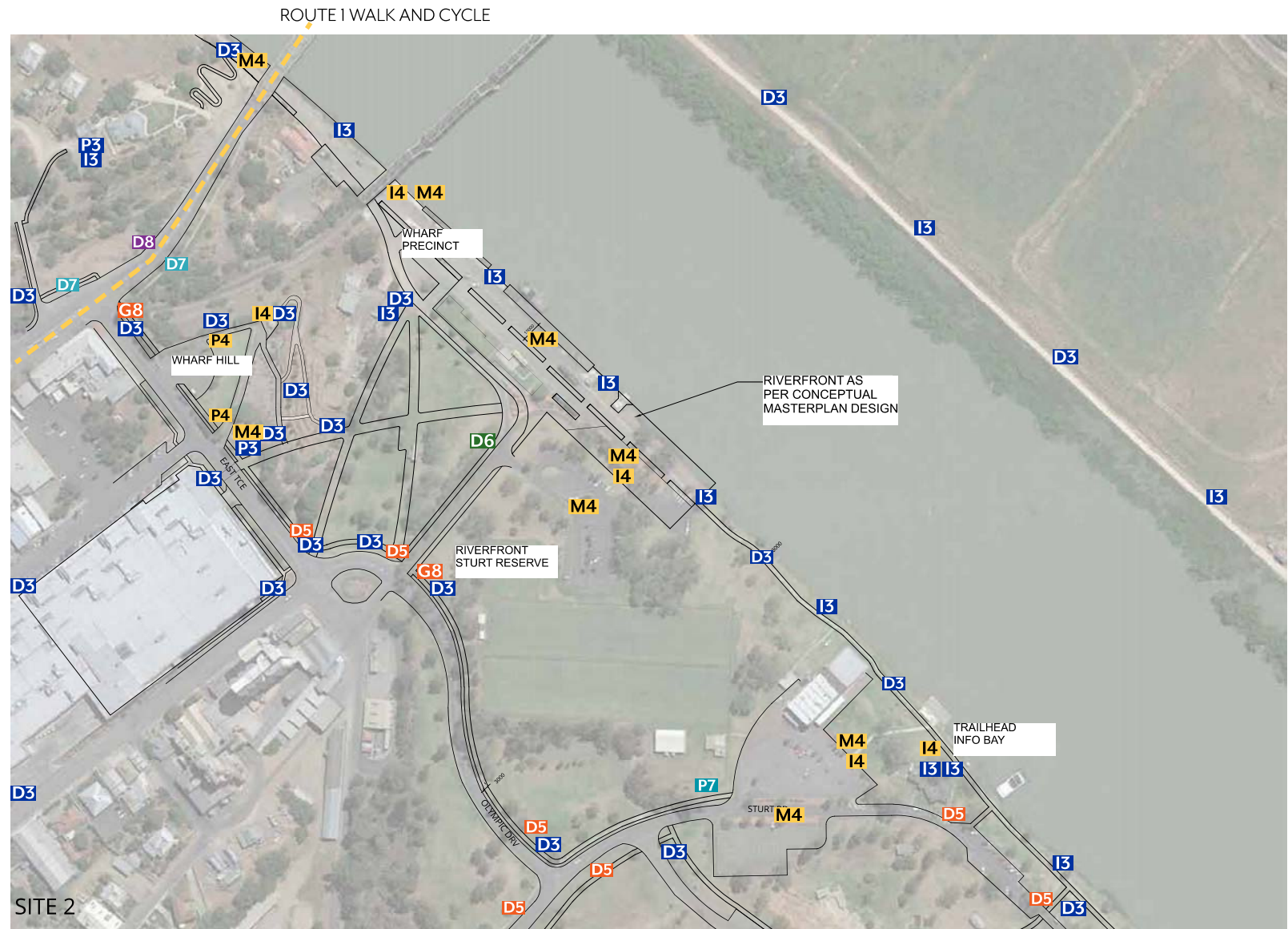
RIVERFRONT SITE 2

SECTION 4 KEY SIGN LOCATIONS



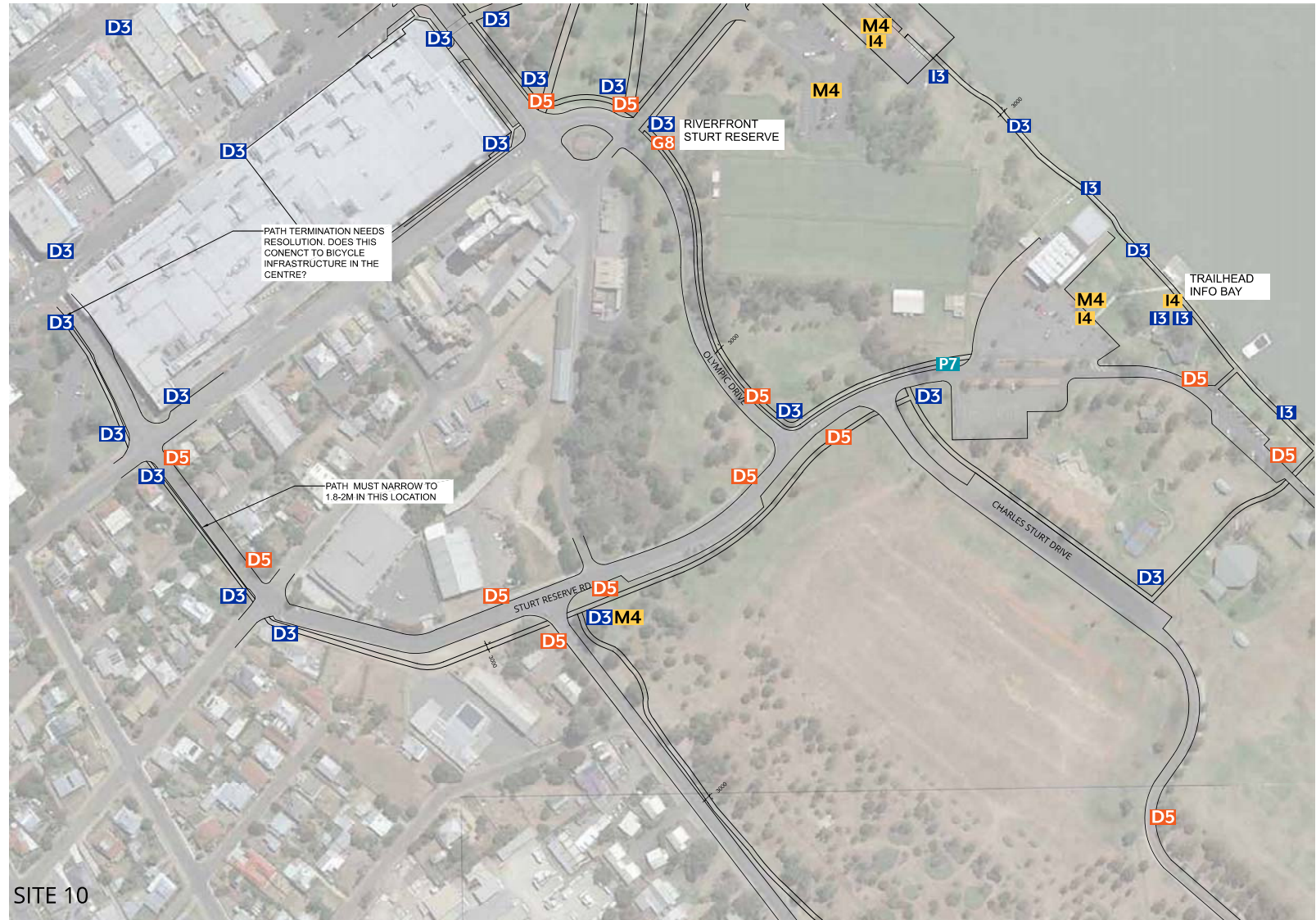
*All sign locations are indicative only

- G8** GATEWAY ENTRY STATEMENT
- G7** GATEWAY SIGN 4000H
- D8** DIRECTIONAL POST + BLADE 3000H
- D7** VEHICLE DIRECTIONAL 4000H
- D6** VEHICLE DIRECTIONAL 3500H
- D5** VEHICLE DIRECTIONAL 3000H
- D4** PEDESTRIAN CYCLIST DIRECTIONAL 2500H
- D3** PEDESTRIAN CYCLIST DIRECTIONAL 2000H
- D2** PEDESTRIAN CYCLIST DIRECTIONAL 1500H
- D1** TRAIL MARKER 900H
- P7** PLACE NAME SIGN 4000H
- P6** PLACE NAME SIGN 3500H
- P5** PLACE NAME SIGN 3000H
- P4** PLACE NAME SIGN 2500H
- P3** PLACE NAME SIGN 2000H
- M4** MAP DIRECTORY SIGN 2500H
- M3** MAP DIRECTORY SIGN 2000H
- M2** MAP DIRECTORY SIGN 1500H
- I4** INTERPRETIVE SIGN 2500H
- I3** INTERPRETIVE SIGN 2000H
- I2** INTERPRETIVE SIGN 1500H



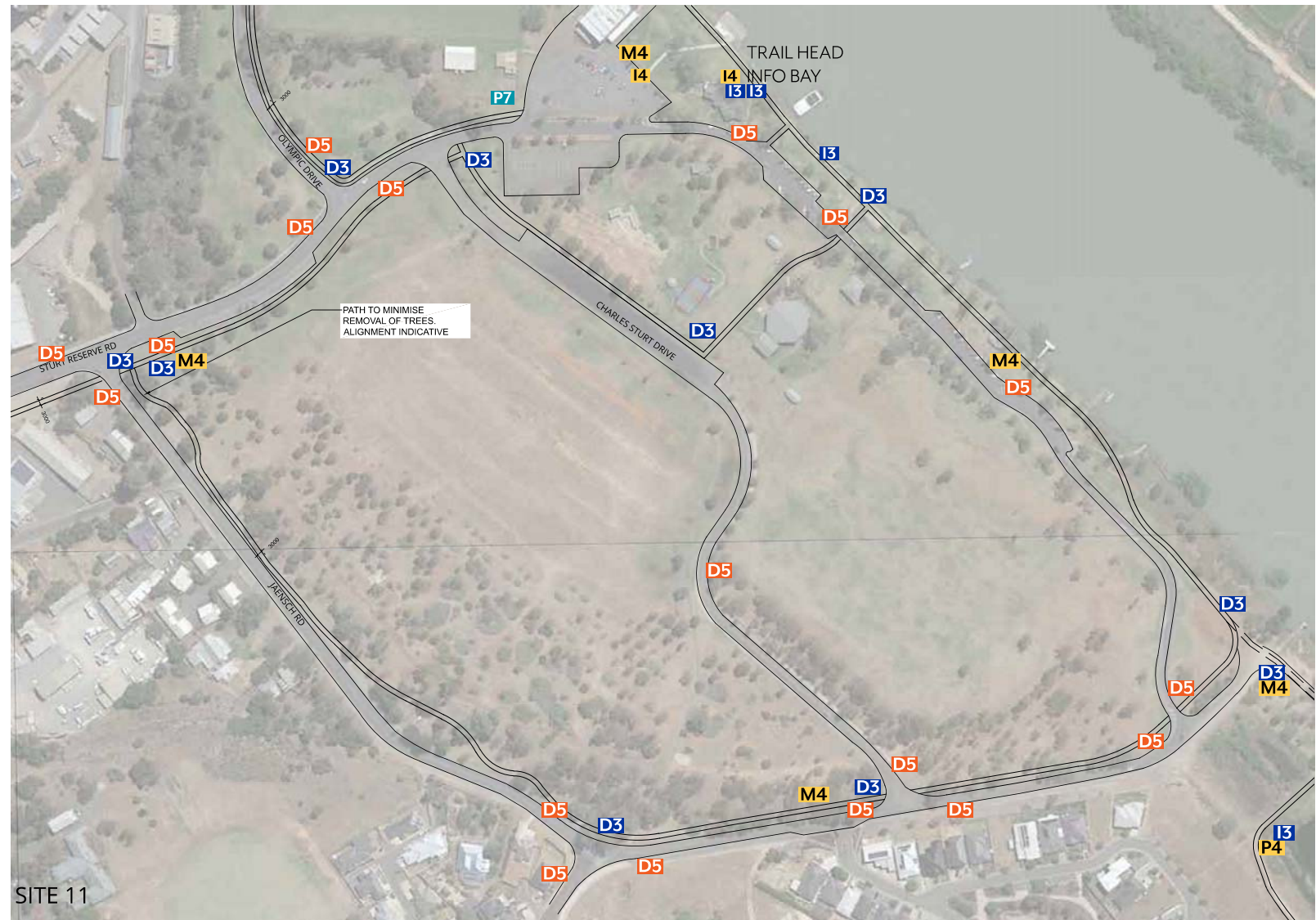
*All sign locations are indicative only

- G8** GATEWAY ENTRY STATEMENT
- G7** GATEWAY SIGN 4000H
- D8** DIRECTIONAL POST + BLADE 3000H
- D7** VEHICLE DIRECTIONAL 4000H
- D6** VEHICLE DIRECTIONAL 3500H
- D5** VEHICLE DIRECTIONAL 3000H
- D4** PEDESTRIAN CYCLIST DIRECTIONAL 2500H
- D3** PEDESTRIAN CYCLIST DIRECTIONAL 2000H
- D2** PEDESTRIAN CYCLIST DIRECTIONAL 1500H
- D1** TRAIL MARKER 900H
- P7** PLACE NAME SIGN 4000H
- P6** PLACE NAME SIGN 3500H
- P5** PLACE NAME SIGN 3000H
- P4** PLACE NAME SIGN 2500H
- P3** PLACE NAME SIGN 2000H
- M4** MAP DIRECTORY SIGN 2500H
- M3** MAP DIRECTORY SIGN 2000H
- M2** MAP DIRECTORY SIGN 1500H
- I4** INTERPRETIVE SIGN 2500H
- I3** INTERPRETIVE SIGN 2000H
- I2** INTERPRETIVE SIGN 1500H



*All sign locations are indicative only

- G8** GATEWAY ENTRY STATEMENT
- G7** GATEWAY SIGN 4000H
- D8** DIRECTIONAL POST + BLADE 3000H
- D7** VEHICLE DIRECTIONAL 4000H
- D6** VEHICLE DIRECTIONAL 3500H
- D5** VEHICLE DIRECTIONAL 3000H
- D4** PEDESTRIAN CYCLIST DIRECTIONAL 2500H
- D3** PEDESTRIAN CYCLIST DIRECTIONAL 2000H
- D2** PEDESTRIAN CYCLIST DIRECTIONAL 1500H
- D1** TRAIL MARKER 900H
- P7** PLACE NAME SIGN 4000H
- P6** PLACE NAME SIGN 3500H
- P5** PLACE NAME SIGN 3000H
- P4** PLACE NAME SIGN 2500H
- P3** PLACE NAME SIGN 2000H
- M4** MAP DIRECTORY SIGN 2500H
- M3** MAP DIRECTORY SIGN 2000H
- M2** MAP DIRECTORY SIGN 1500H
- I4** INTERPRETIVE SIGN 2500H
- I3** INTERPRETIVE SIGN 2000H
- I2** INTERPRETIVE SIGN 1500H



RIVERFRONT SITE 4

SECTION 4 KEY SIGN LOCATIONS



*All sign locations are indicative only

- G8** GATEWAY ENTRY STATEMENT
- G7** GATEWAY SIGN 4000H
- D8** DIRECTIONAL POST + BLADE 3000H
- D7** VEHICLE DIRECTIONAL 4000H
- D6** VEHICLE DIRECTIONAL 3500H
- D5** VEHICLE DIRECTIONAL 3000H
- D4** PEDESTRIAN CYCLIST DIRECTIONAL 2500H
- D3** PEDESTRIAN CYCLIST DIRECTIONAL 2000H
- D2** PEDESTRIAN CYCLIST DIRECTIONAL 1500H
- D1** TRAIL MARKER 900H
- P7** PLACE NAME SIGN 4000H
- P6** PLACE NAME SIGN 3500H
- P5** PLACE NAME SIGN 3000H
- P4** PLACE NAME SIGN 2500H
- P3** PLACE NAME SIGN 2000H
- M4** MAP DIRECTORY SIGN 2500H
- M3** MAP DIRECTORY SIGN 2000H
- M2** MAP DIRECTORY SIGN 1500H
- I4** INTERPRETIVE SIGN 2500H
- I3** INTERPRETIVE SIGN 2000H
- I2** INTERPRETIVE SIGN 1500H



RIVERFRONT SITE 12

SECTION 4 KEY SIGN LOCATIONS



*All sign locations are indicative only

- G8** GATEWAY ENTRY STATEMENT
- G7** GATEWAY SIGN 4000H
- D8** DIRECTIONAL POST + BLADE 3000H
- D7** VEHICLE DIRECTIONAL 4000H
- D6** VEHICLE DIRECTIONAL 3500H
- D5** VEHICLE DIRECTIONAL 3000H
- D4** PEDESTRIAN CYCLIST DIRECTIONAL 2500H
- D3** PEDESTRIAN CYCLIST DIRECTIONAL 2000H
- D2** PEDESTRIAN CYCLIST DIRECTIONAL 1500H
- D1** TRAIL MARKER 900H
- P7** PLACE NAME SIGN 4000H
- P6** PLACE NAME SIGN 3500H
- P5** PLACE NAME SIGN 3000H
- P4** PLACE NAME SIGN 2500H
- P3** PLACE NAME SIGN 2000H
- M4** MAP DIRECTORY SIGN 2500H
- M3** MAP DIRECTORY SIGN 2000H
- M2** MAP DIRECTORY SIGN 1500H
- I4** INTERPRETIVE SIGN 2500H
- I3** INTERPRETIVE SIGN 2000H
- I2** INTERPRETIVE SIGN 1500H



KEY GATEWAY AND DIRECTIONAL SIGNS

SECTION 4 KEY SIGN LOCATIONS



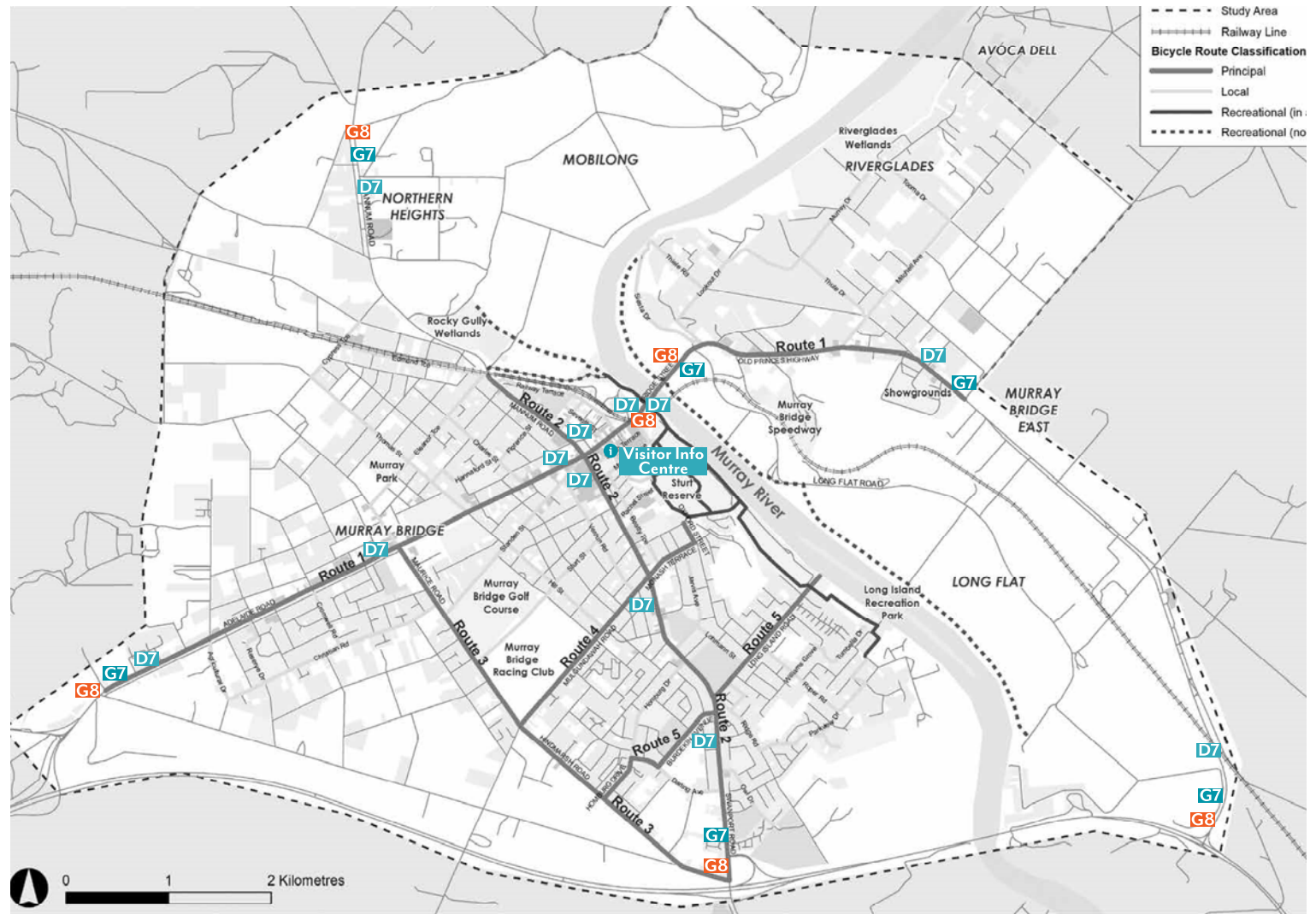
This map indicates key locations for proposed new branded gateway and vehicle directional signs to direct visitors to key primary destinations:

- City Centre
- Riverfront
- Visitor Centre

G7 signs may replace G8 entry statements pending budgets and city entry landscaping plans.

*All sign locations are indicative only

- G8** GATEWAY ENTRY STATEMENT
- G7** GATEWAY SIGN 4000H
- D8** DIRECTIONAL POST + BLADE 3000H
- D7** VEHICLE DIRECTIONAL 4000H
- D6** VEHICLE DIRECTIONAL 3500H
- D5** VEHICLE DIRECTIONAL 3000H



POST AND BLADE DIRECTIONAL SIGN CONCEPT

SECTION 4 KEY SIGN LOCATIONS



Scale 1:10

D8 DIRECTIONAL POST + BLADE

Proposed street post and blade directional sign concept.

Existing and proposed new street sign posts to be upgraded with new blades in brand colours as follows.

Bicycle Routes - YELLOW

Key parks, reserves and sports fields - GREEN

Key public facilities - BLUE

Hospital and medical centres - ORANGE.

Note : Walking and cycling times and distances based on;

4km/hr walking = 0.083km/min or 1km/12min

12km/hr cycling = 0.25km/min or 1km/4min



Road name blade with 'M' branding - WHITE

Bicycle Route blade option - YELLOW

Key parks, reserves and sports fields - GREEN
with walking and cycling times and distances

Key public facilities and Visitor Information Centre - BLUE
with walking and cycling times and distances

Hospital, Medical Centre - Orange



Proposed principle route signage indicated as yellow sign blades at all major junctions.

D8 DIRECTIONAL POST + BLADE 3000H

*All sign locations are indicative only

